



GLEBE, NSW

6701/162 Ross Street

2
BED

2
BATH

1
CAR



Deposit Taken!

This 132sqm, Level 7 Apartment offers;
Over-sized 2-Bedroom Apartment in Harold Park offering large balcony with district views

- Large bedrooms with built-in wardrobes
- Modern bathrooms, with bath in ensuite
- Stone kitchen bench tops with Miele appliances
- Spacious living area with direct access to balcony
- North facing large entertainer's balcony
- Ducted Air Conditioning, video intercom and NBN connectivity
- Internal laundry with washer and dryer included
- Car space and storage cage included
- North-west orientation
- 450m to buses, the light rail and the Tramsheds

Deposit Taken

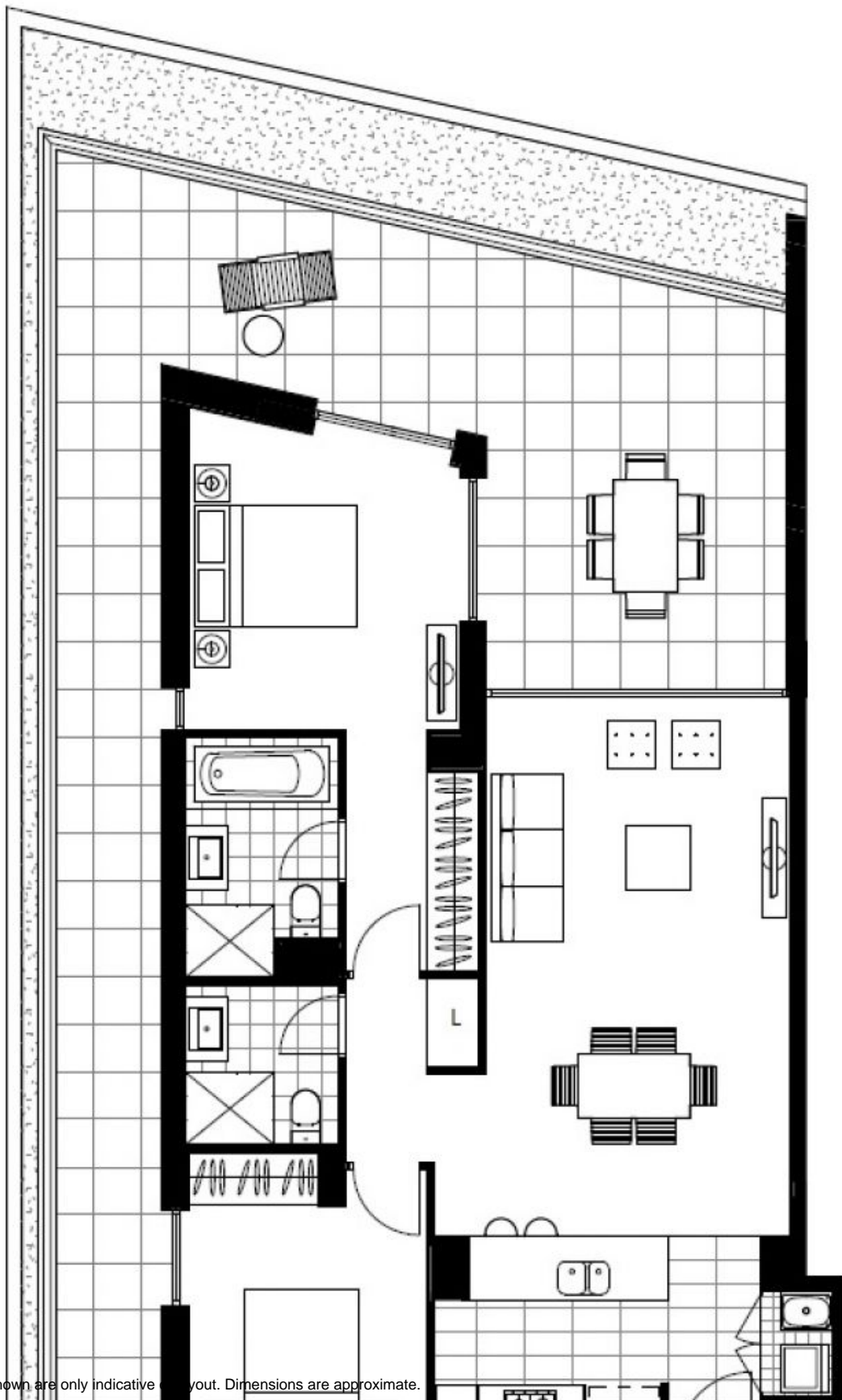
Contact: Matthew Matthews
02 8588 8888
0418 266 590
Stuart Nohra
02 8588 8888
0432 206 000

Type: Apartment

Date Available: 16/01/2019

Bond: \$3400

<https://www.resbymirvac.com>



Plans shown are only indicative of layout. Dimensions are approximate.

GLEBE, NSW
6701/162 Ross Street