



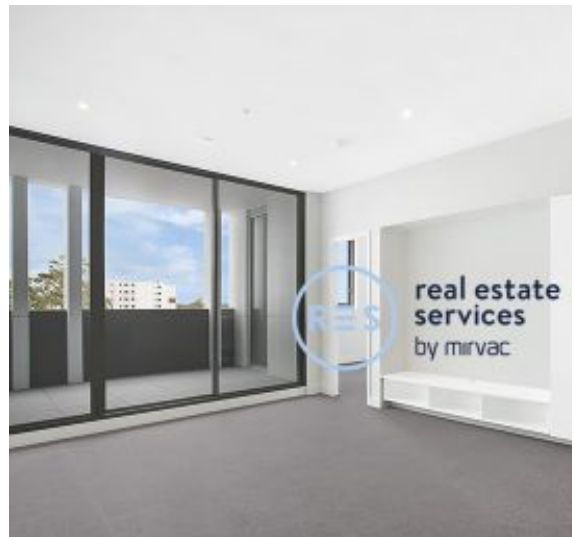
DEPOSIT TAKEN

More apartments available for lease in Green Square - Zetland!

Please call 0497 555 519 or email carmen.whiteley@resbymirvac.com for more information



GREEN SQUARE



ZETLAND, NSW
205/18 Ebsworth Street

2 **2** **1** 
BED BATH CAR

2-Bedroom Apartment with Parking in the Heart of Green Square!

This 97sqm, Bright 2-Bedroom Apartment offers:

- Modern kitchen with stone benchtops and Smeg appliances
- Open plan living and dining area with built-in TV cabinetry
- Large bedrooms with floor to ceiling built-in wardrobes
- Sleek bathrooms with plenty of storage
- South-West-facing balcony with access from living room and main bedroom
- Internal laundry with dryer included
- Secure basement car space and storage cage included
- Ducted A/C, video intercom and NBN connectivity
- Less than 300m to Woolworths, The Social Corner and Green Square Train Station

DEPOSIT TAKEN - More Apartments Available!

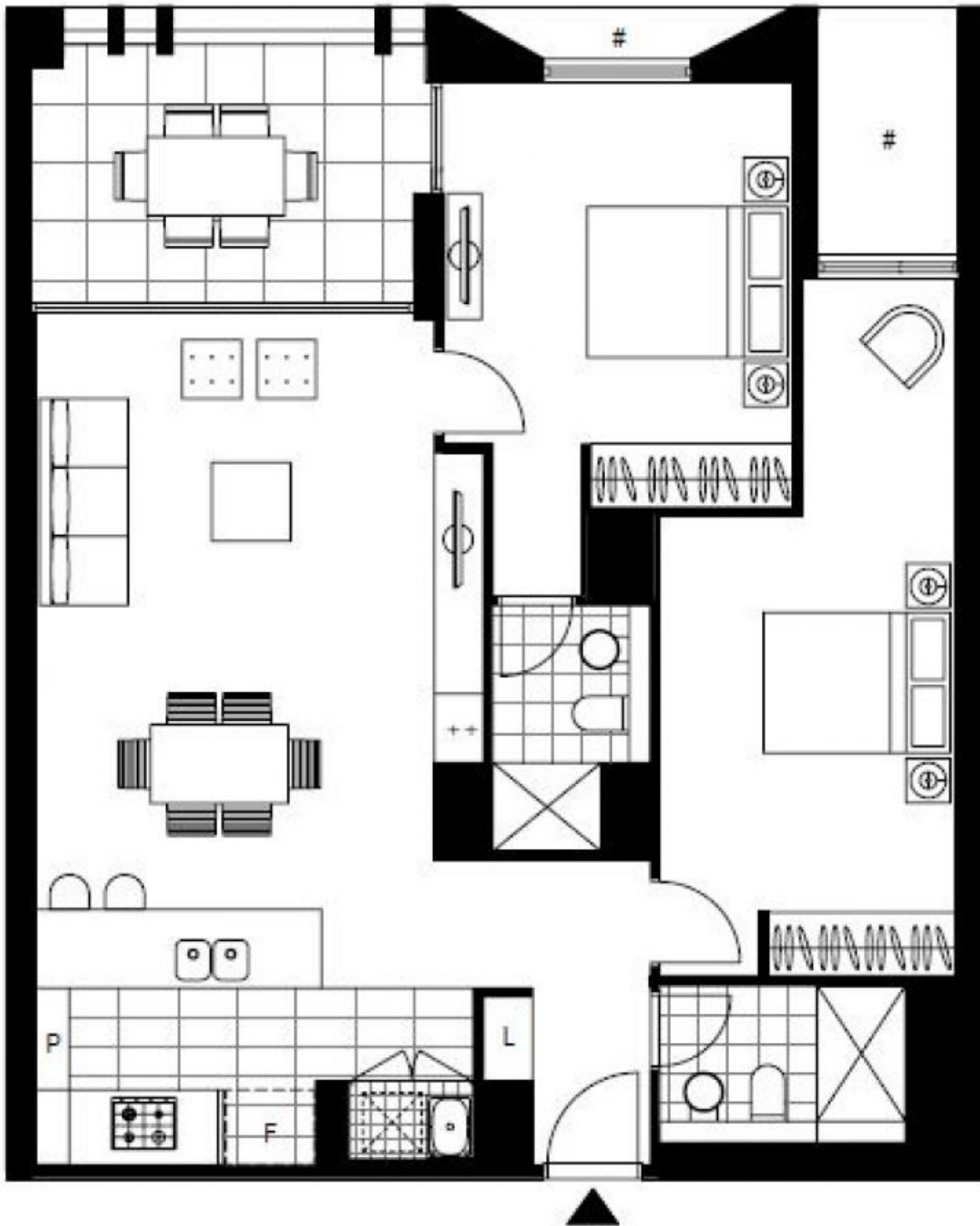
Contact: Carmen Whiteley
02 8588 8888
0497 555 519

Type: Apartment

Date Available: 20/08/2020

Bond: \$2640

<https://www.resbymirvac.com>



Plans shown are only indicative of layout. Dimensions are approximate.

ZETLAND, NSW
205/18 Ebsworth Street