

## ZETLAND, NSW

209/28 Ebsworth Street

**2** BED **2** BATH **1** CAR 

### Spacious 2-Bedroom Apartment with Media Nook and Parking

This 90sqm, 2-Bedroom Apartment features:

- Well-appointed bedrooms with generous built-in wardrobes
- Study nook at entry, perfect for a home office
- Open-plan living and dining area, leading to South-facing balcony
- Living room equipped with built-in TV unit
- Contemporary kitchen with stone benchtops and Smeg appliances
- Sleek bathrooms with plenty of vanity storage
- Internal laundry with dryer included
- Secure car space and storage cage included
- Ducted A/C, video intercom and NBN connectivity
- 300m to Woolworths, The Social Corner and Green Square Train Station (10mins to the City)

### INSPECTION CANCELLED - DEPOSIT TAKEN

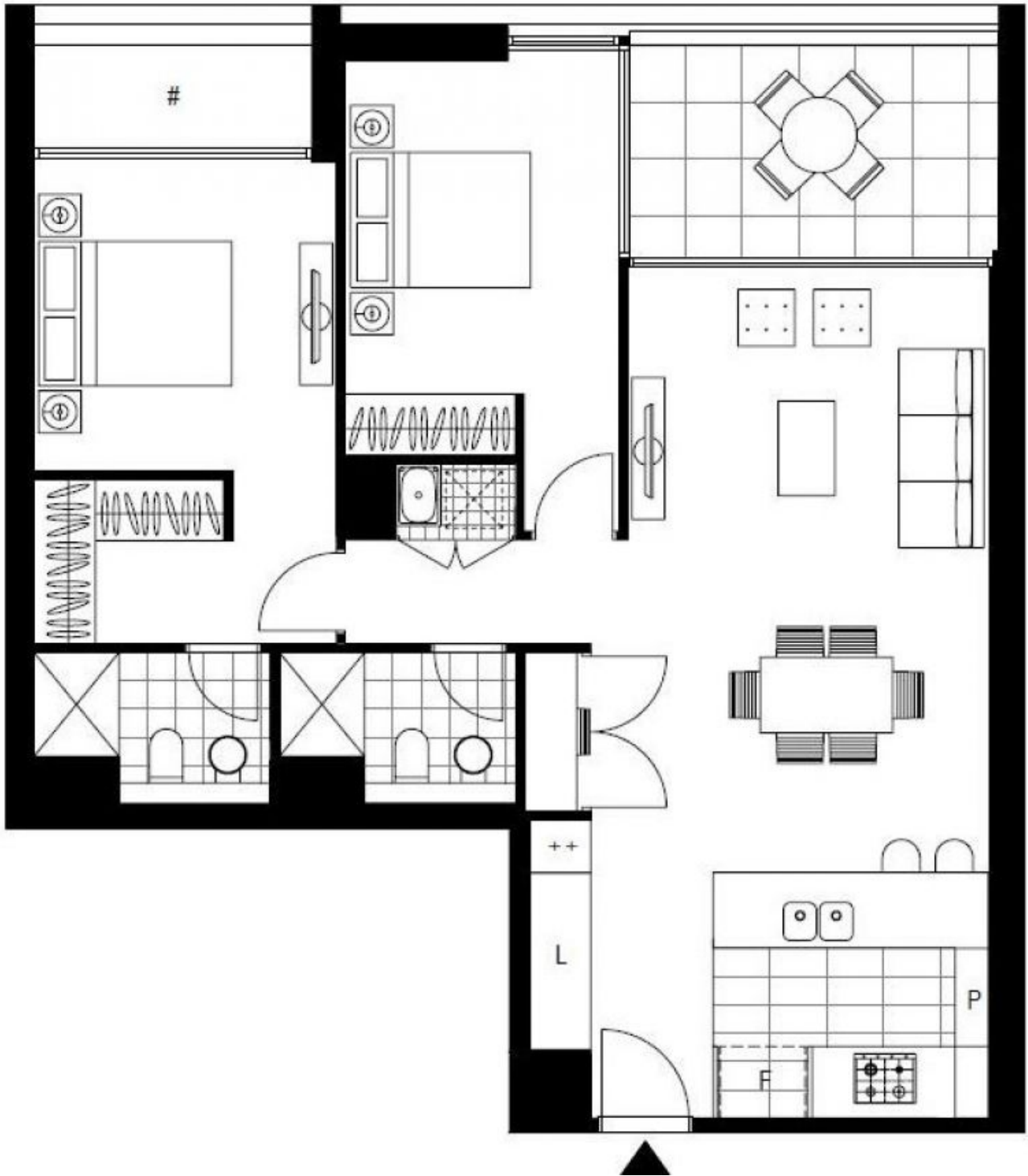
**Contact:** Carmen Whiteley  
02 8588 8888  
0497 555 519

**Type:** Apartment

**Date Available:** 23/07/2020

**Bond:** \$2720

<https://www.resbymirvac.com>



Plans shown are only indicative of layout. Dimensions are approximate.

**ZETLAND, NSW**  
209/28 Ebsworth Street