



ZETLAND, NSW

205/8 Ebsworth Street

1
BED

1
BATH



Modern 1-Bedroom Apartment in Zetland

This Level 2, 57sqm Apartment features;

- Tiled open-plan living and dining area, with access to balcony
- Modern kitchen with stone benchtop and Smeg appliances
- Integrated refrigerator included
- Large bedroom with floor to ceiling built-in wardrobe
- Sleek bathroom with plenty of storage
- Internal laundry with dryer included
- Secure basement storage cage included
- Ducted A/C, video intercom and NBN connectivity
- Exclusive rooftop access with city views
- 300m to Woolworths, The Social Corner and Green Square Train Station.

DEPOSIT TAKEN

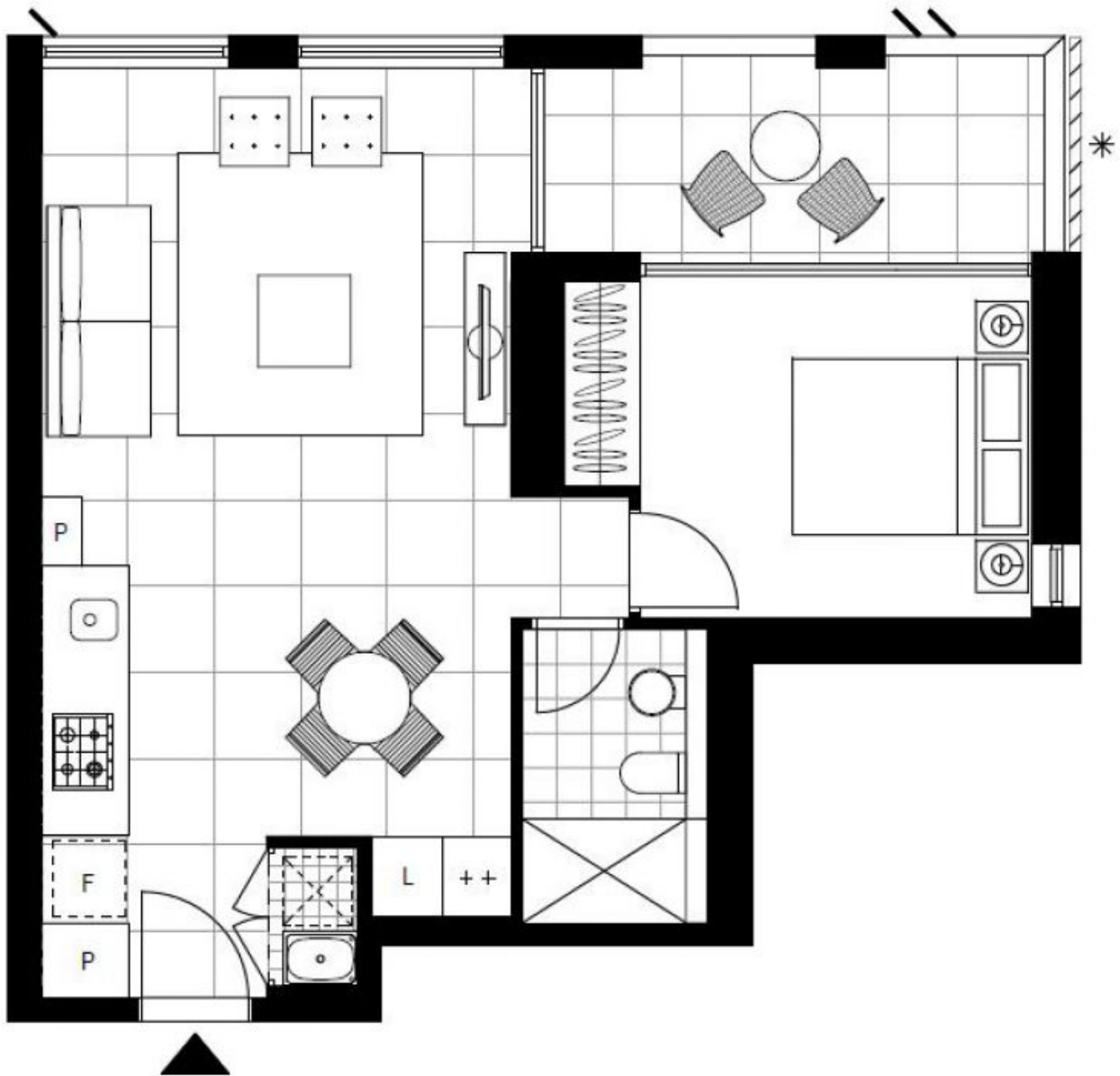
Contact: Carmen Whiteley
02 8588 8888
0497 555 519

Type: Apartment

Date Available: 13/01/2021

Bond: \$1840

<https://www.resbymirvac.com>



Plans shown are only indicative of layout. Dimensions are approximate.

ZETLAND, NSW
205/8 Ebsworth Street