



## ZETLAND, NSW

205/8 Ebsworth Street

**1**  
BED

**1**  
BATH



### Modern 1-Bedroom Apartment in Zetland

This Level 2, 57sqm Apartment features;

- Tiled open-plan living and dining area, with access to balcony
- Modern kitchen with stone benchtop and Smeg appliances
- Integrated refrigerator included
- Large bedroom with floor to ceiling built-in wardrobe
- Sleek bathroom with plenty of storage
- Internal laundry with dryer included
- Secure basement storage cage included
- Ducted A/C, video intercom and NBN connectivity
- Exclusive rooftop access with city views
- 300m to Woolworths, The Social Corner and Green Square Train Station.

### DEPOSIT TAKEN

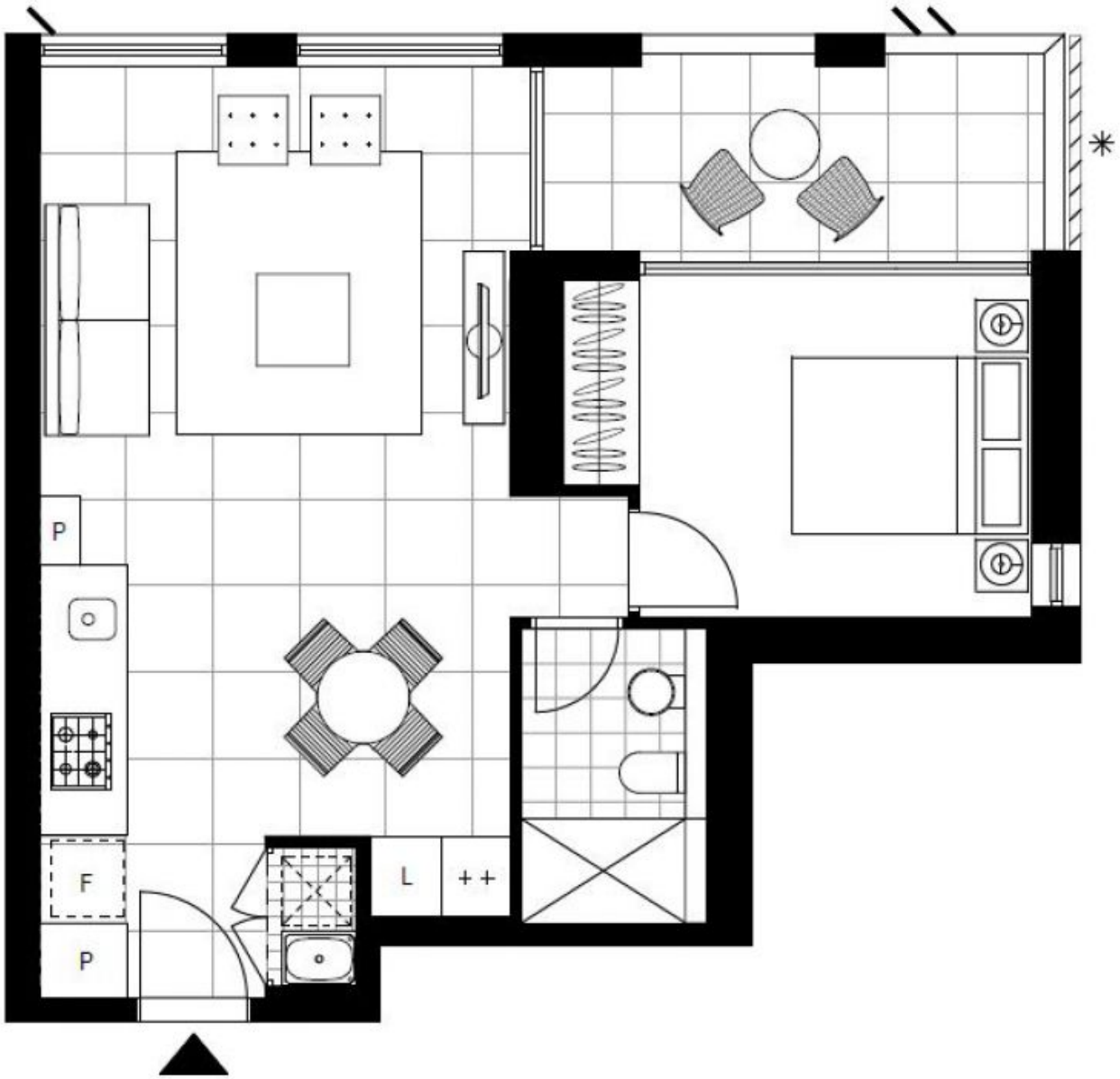
**Contact:** Carmen Whiteley  
02 8588 8888  
0497 555 519

**Type:** Apartment

**Date Available:** 13/01/2021

**Bond:** \$1840

<https://www.resbymirvac.com>



Plans shown are only indicative of layout. Dimensions are approximate.

**ZETLAND, NSW**  
205/8 Ebsworth Street