



ZETLAND, NSW

201/18 Ebsworth Street

2 BED **2** BATH **1** CAR 

Private and Tranquil 2-Bedroom Apartment with Parking

This East-facing, 96sqm Apartment features;

- Large double bedrooms with built-in wardrobes
- Sleek bathrooms with plenty of storage, ensuite off master
- Modern kitchen with stone benchtops and Smeg appliances
- Open plan living and dining area with built-in TV cabinetry
- Private East-facing courtyard with access from living and master bedroom
- Internal laundry with dryer included
- Secure basement car space and storage cage included
- Ducted A/C, video intercom and NBN connectivity
- Less than 300m to Woolworths, The Social Corner and Green Square Train Station

\$720 per week

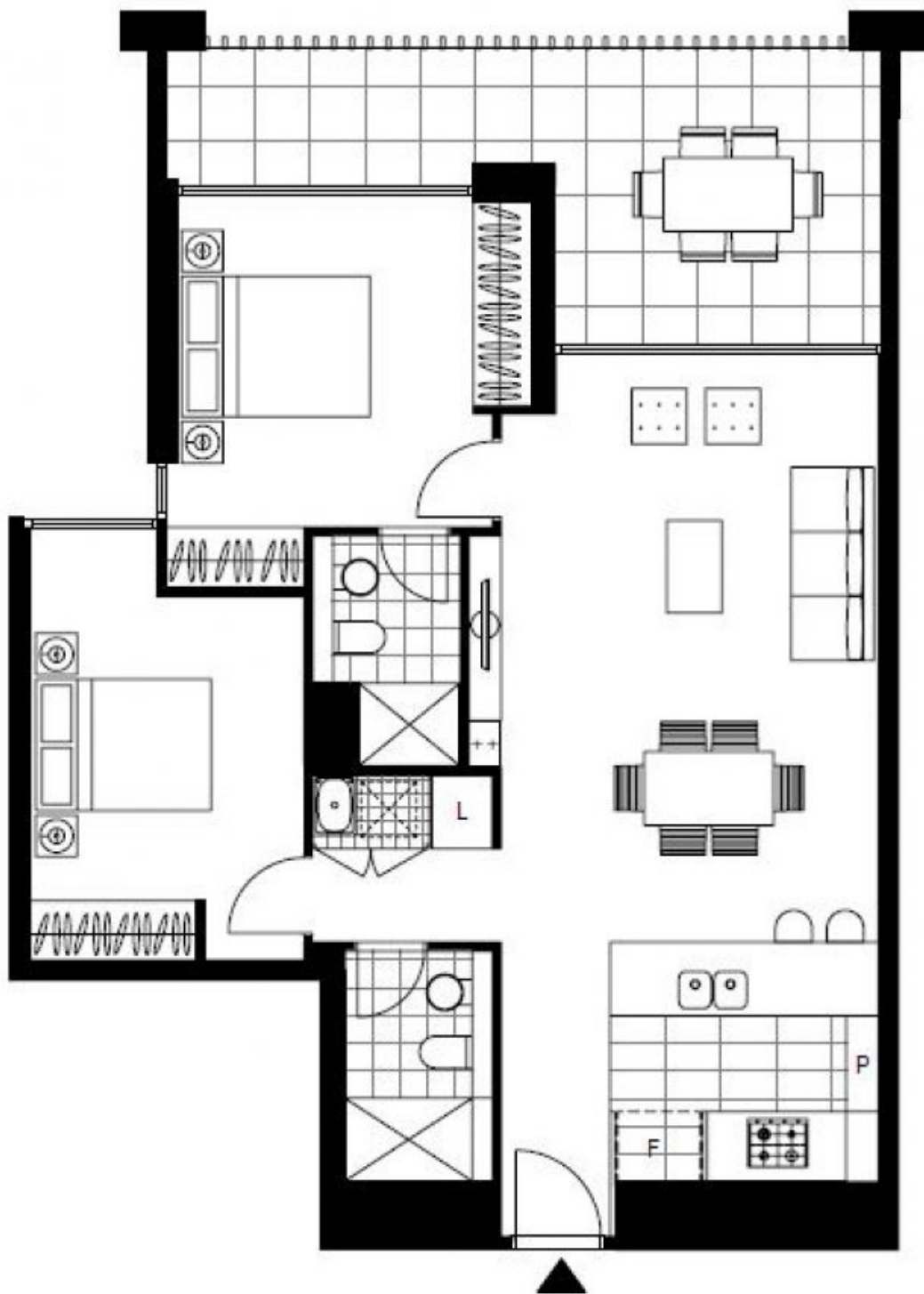
Contact: Carmen Whiteley
02 8588 8888
0497 555 519

Type: Apartment

Date Available: 05/08/2020

Bond: \$2880

<https://www.resbymirvac.com>



Plans shown are only indicative of layout. Dimensions are approximate.

ZETLAND, NSW
201/18 Ebsworth Street