



**DOCKLANDS, VIC**  
3003/1 Point Park Crescent

**3** BED    **2** BATH    **2** CAR



**Breathtaking sub penthouse living with spectacular views**

One of Yarra's Point's shining jewels sitting high on the 30th floor and offering exceptional views of the CBD, picturesque marina, and northern ranges, this outstanding 3 bedroom + study, 2 bathroom, 2 car space sub penthouse apartment is the epitome of stylish, elegant, and spacious Docklands living.

An expansive central lounge and dining zone is open and free-flowing, and has access out to the generous north-east facing balcony where the unforgettable views can be seen day and night. The immaculate kitchen is heaven for home cooks and is fitted with premium stone along with the finest of Miele appliances including a steam oven plus an integrated fridge and freezer.

**Contact Agent**

**Contact:** Baden Lucas  
03 9645 1199  
0418 888 751  
Baden Lucas  
03 9645 1199  
0418 888 751

**Type:** Apartment

**Sold Date:** 12/06/2019

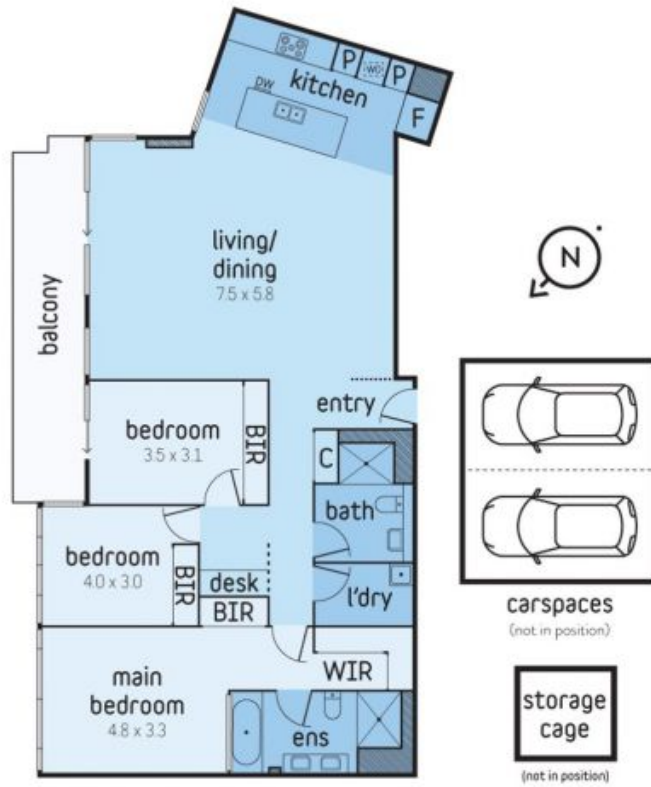
<https://www.resbymirvac.com>

(not in position)

# 3003/1 POINT PARK CRESCENT, DOCKLANDS



This floorplan is an artist's impression only, it contains information that we believe to be reliable however we cannot guarantee and accept no responsibility for the accuracy of information supplied. All dimensions are indicative and listed in metres. Interested parties should take their own measurements or engage the services of a licensed surveyor.



Plans shown are only indicative of layout. Dimensions are approximate.

**DOCKLANDS, VIC**  
3003/1 Point Park Crescent