

ZETLAND, NSW
411/18 Ebsworth Street

2 **2** **1** 
BED BATH CAR

North-East Facing, 2-Bedroom Apartment with Parking in Green Square

This 95sqm, Mirvac apartment features;

- Large bedrooms with built-in wardrobes
- Sleek bathrooms with plenty of storage
- Modern kitchen with stone benchtops and built-in Smeg appliances
- Open plan living with built-in TV cabinetry
- Spacious entertainers' balcony with access from living and bedroom
- Internal laundry with dryer included
- Secure basement car space and storage cage included
- Ducted A/C, video intercom and NBN connectivity
- 300m to Woolworths, Green Square Train Station (10mins to the City) and Green Square Library

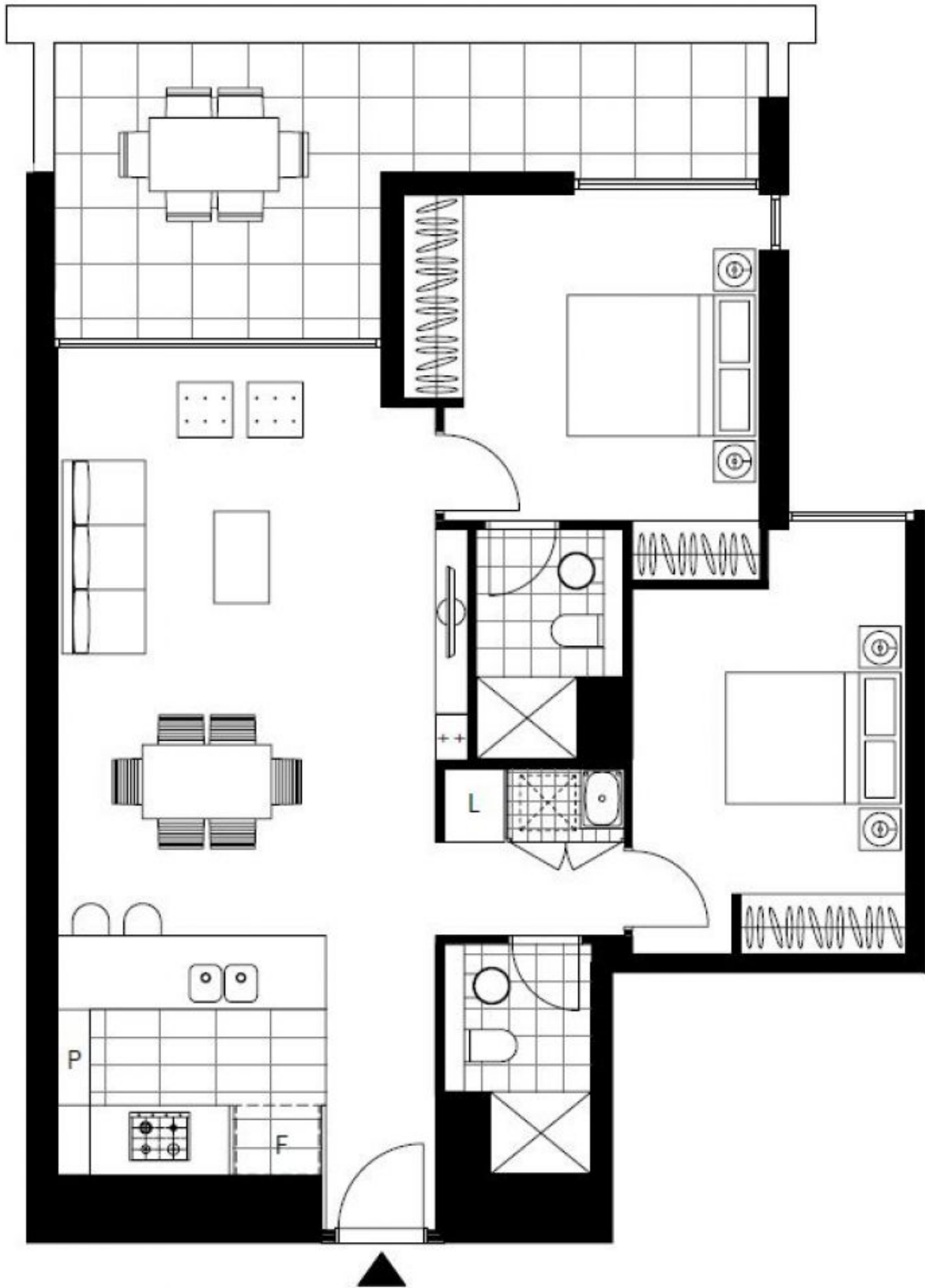
More apartments wanted!

Contact: Carmen Whiteley
02 8588 8888
0497 555 519

Type: Apartment
Date Available: 16/06/2021

Bond: \$3000

<https://www.resbymirvac.com>



Plans shown are only indicative of layout. Dimensions are approximate.

ZETLAND, NSW
411/18 Ebsworth Street