

## ZETLAND, NSW

411/18 Ebsworth Street

**2**  
BED

**2**  
BATH

**1**  
CAR



### North-East Facing, 2-Bedroom Apartment with Parking in Green Square

This 95sqm, Mirvac apartment features;

- Large bedrooms with built-in wardrobes
- Sleek bathrooms with plenty of storage
- Modern kitchen with stone benchtops and built-in Smeg appliances
- Open plan living with built-in TV cabinetry
- Spacious entertainers' balcony with access from living and bedroom
- Internal laundry with dryer included
- Secure basement car space and storage cage included
- Ducted A/C, video intercom and NBN connectivity
- 300m to Woolworths, Green Square Train Station (10mins to the City) and Green Square Library

### More apartments wanted!

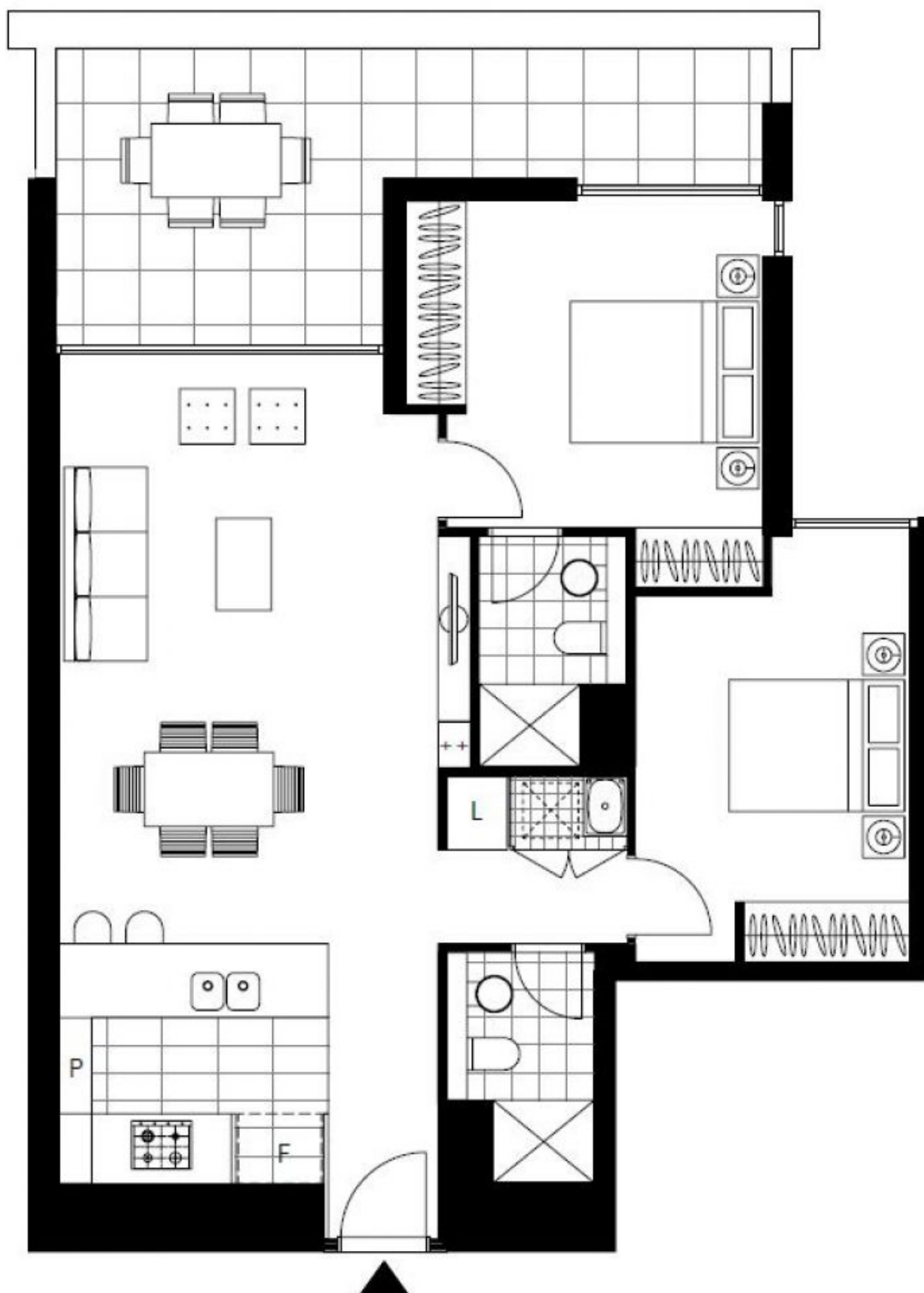
**Contact:** Carmen Whiteley  
02 8588 8888  
0497 555 519

**Type:** Apartment

**Date Available:** 16/06/2021

**Bond:** \$3000

<https://www.resbymirvac.com>



Plans shown are only indicative of layout. Dimensions are approximate.

**ZETLAND, NSW**  
411/18 Ebsworth Street