



## FOREST LODGE, NSW

608/2 Scotsman Street

**2**  
BED

**2**  
BATH

**1**  
CAR



### Location! Size! View!

Arguably one of the largest 2-Bedroom Apartments in Harold Park, this functional and well-appointed home will be sure to impress. This spacious home cleverly integrates living and entertaining whilst providing privacy and the convenient lifestyle this complex has to offer.

This 160sqm, 2-Bedroom Apartment plus Study features:

- Chef's kitchen with stone benchtops, Miele appliances and window to a generous balcony
- Top floor, north-facing with treetops views over of neighbouring Annandale
- Oversized master bedroom with built-in wardrobes, leading onto ensuite
- Separate study room, allowing for a versatile space or home office

### SOLD

**Council Rates:** \$1,021/year (approx)

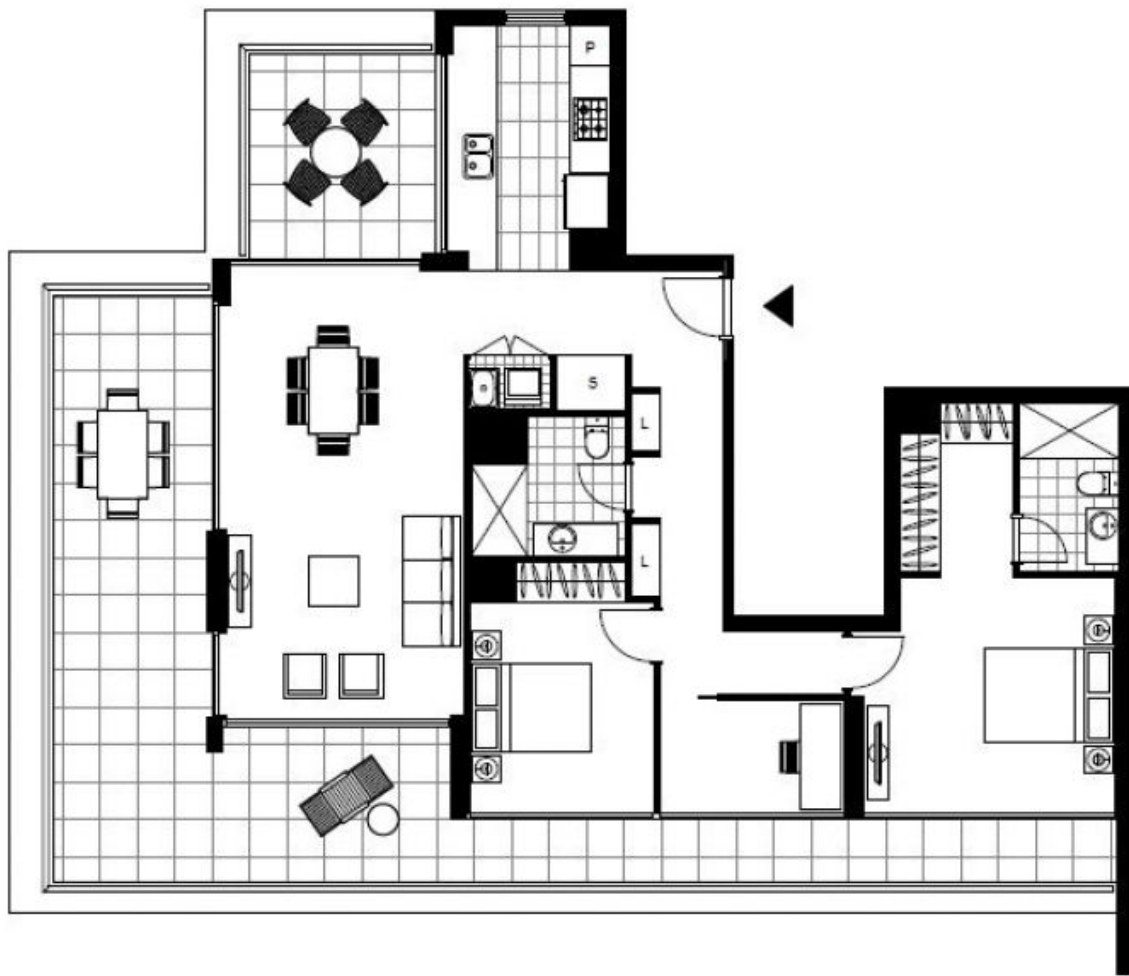
**Strata Rates:** \$7,084/year (approx)

**Contact:** Matthew Matthews  
02 8588 8888  
0418 266 590

**Type:** Apartment

**Sold Date:** 26/10/2018

<https://www.resbymirvac.com>



LEVEL 6

Plans shown are only indicative of layout. Dimensions are approximate.

**FOREST LODGE, NSW**  
608/2 Scotsman Street