



ZETLAND, NSW

711/18 Ebsworth Street

2 **2** **1** **RES**
BED BATH CAR

2-Bedroom Apartment with Parking in Zetland

This 86sqm, 7th floor Apartment features:

- Large bedrooms with generous built-in wardrobes
- Spacious living and dining area with integrated tv unit
- Contemporary kitchen with stone benchtops and Smeg appliances
- Integrated Fisher & Paykel fridge included
- Sleek bathrooms with plenty of storage
- North-East facing balcony with partial city views
- Internal laundry with dryer included
- Secure car space and storage cage included
- Ducted A/C, video intercom and NBN connectivity
- 300m to Woolworths, The Social Corner and Green Square Train Station (10mins to the City)

\$800 per week

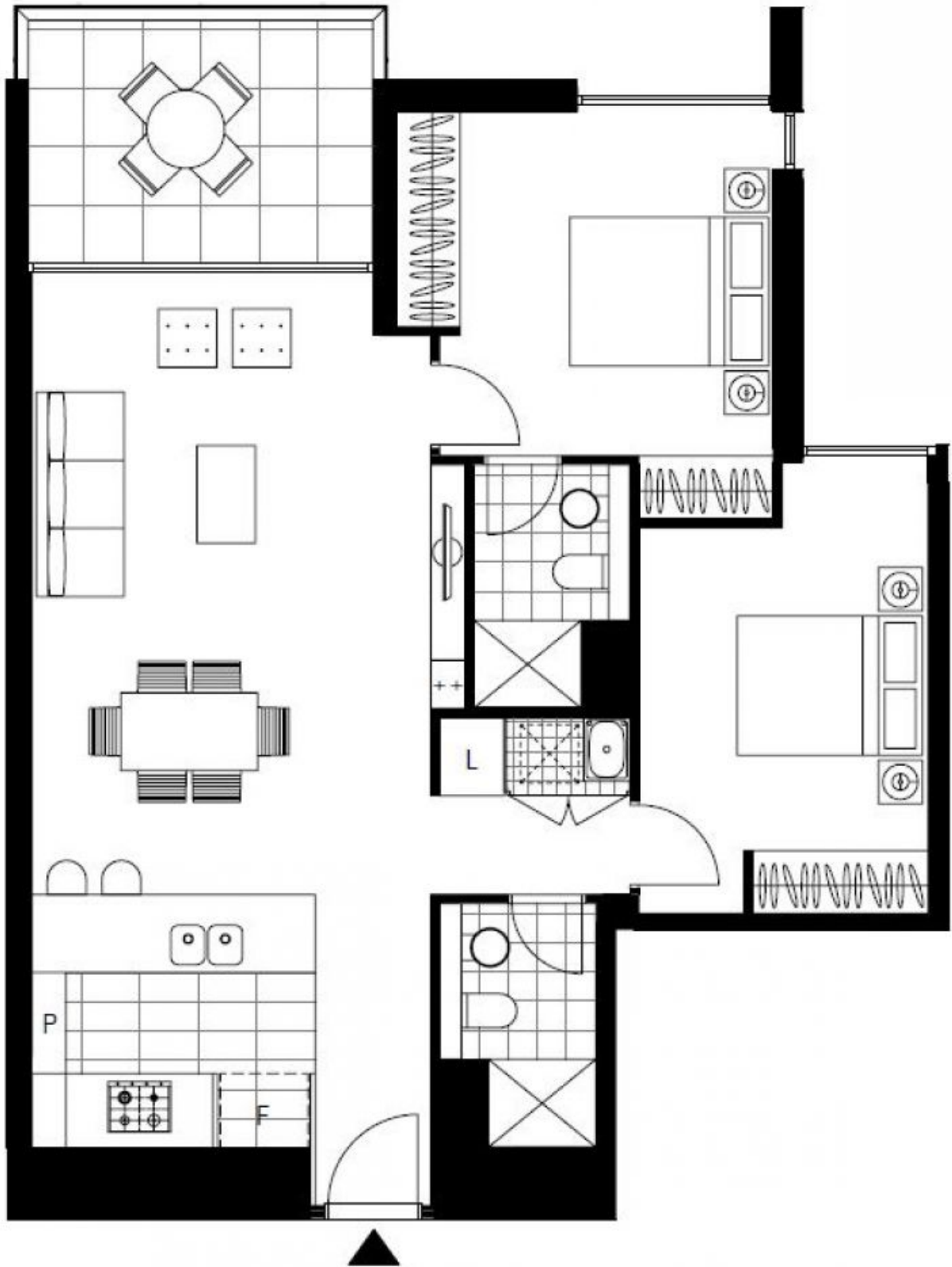
Contact: Carmen Whiteley
02 8588 8888
0497 555 519

Type: Apartment

Date Available: 12/08/2019

Bond: \$3200

<https://www.resbymirvac.com>



Plans shown are only indicative of layout. Dimensions are approximate.

ZETLAND, NSW
711/18 Ebsworth Street