



## DOCKLANDS, VIC

312/13 Point Park Crescent

1 1 1  
BED BATH CAR



### **Stylish one bedroom podium apartment on the banks of The Yarra**

Podium apartments at Yarra's Edge are rare to come by and you will see why as soon as you enter this contemporary waterfront home. Bright and spacious throughout, enjoy uninterrupted views across leafy Point Park and Yarra River to the city lights of Melbourne's skyline, all within easy strolling distance to public transport and South Wharf shopping/dining. Comprising master bedroom overlooking Point Park and the Yarra, a smart central space connecting all zones, stylish main bathroom plus separate European style laundry. The open kitchen offers high-quality stainless steel appliances, stone bench top and plenty of storage solutions.

Further features include airflow zoned heating and cooling system across living and bedroom areas, secure access and video intercom, dedicated car space and exclusive resident-only access to Yarra Point's gymnasium, bbq grounds and Mirvac's state of the art RekDek lifestyle facility.

**\$500 per week**

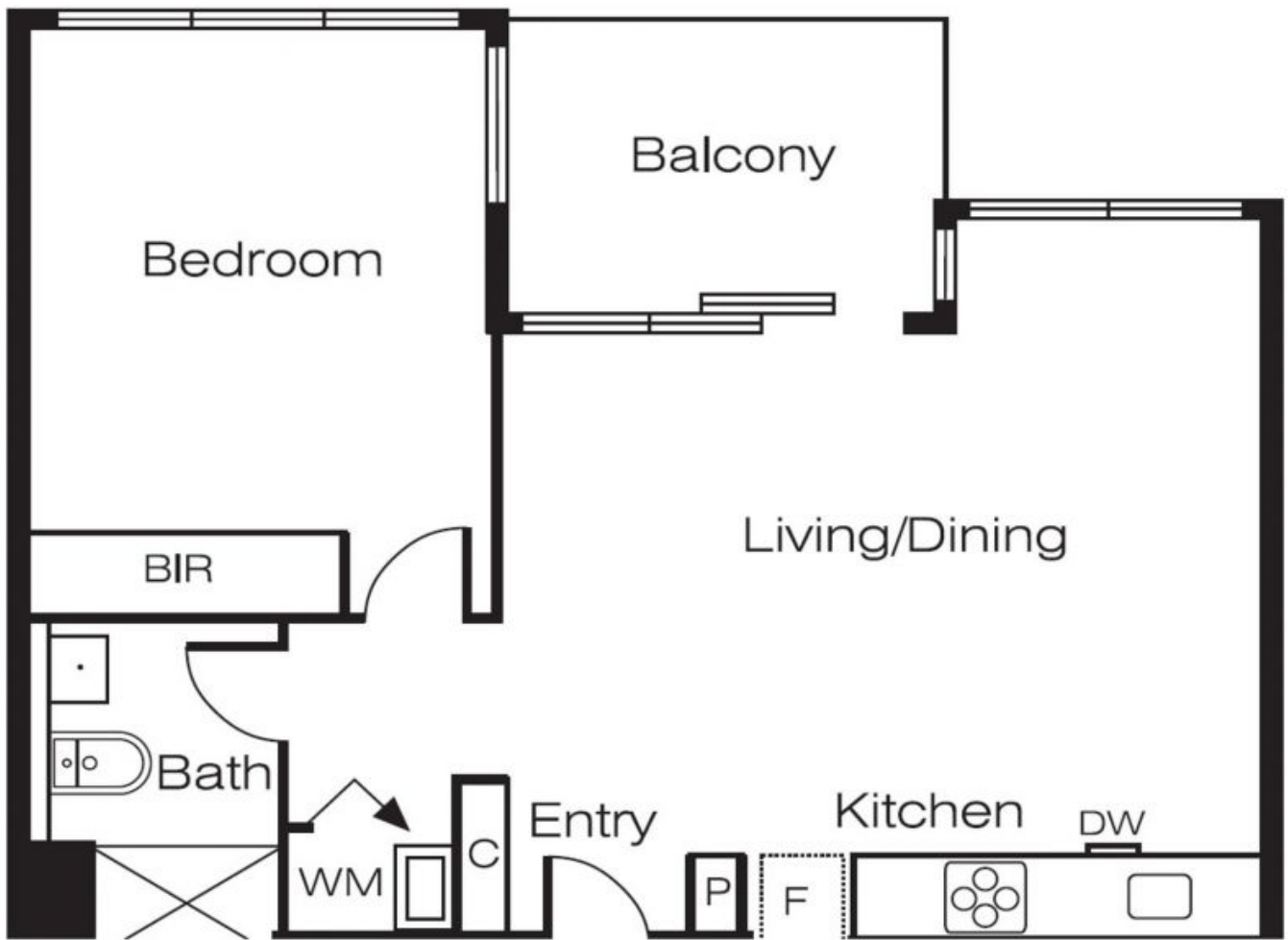
**Contact:** Baden Lucas  
03 9645 1199  
0418 888 751

**Type:** Apartment

**Date Available:** 28/10/2018

**Bond:** \$3000

**<https://www.resbymirvac.com>**



Plans shown are only indicative of layout. Dimensions are approximate.

**DOCKLANDS, VIC**  
312/13 Point Park Crescent