



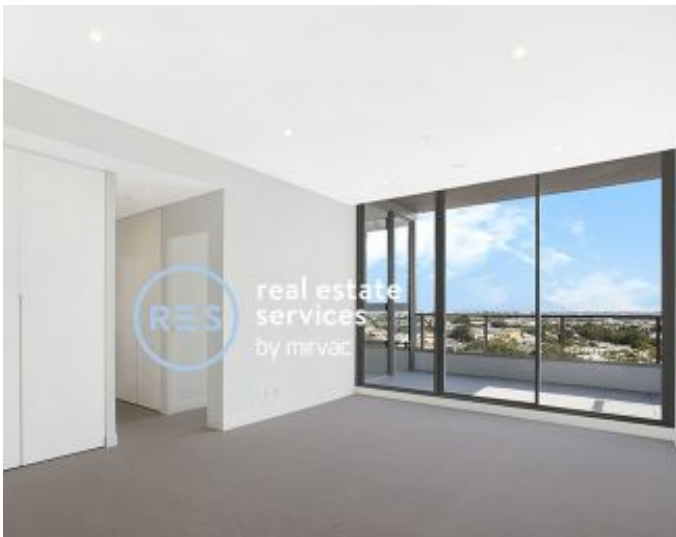
DEPOSIT TAKEN

More apartments available for lease in Green Square - Zetland!

Please call our leasing hotline 0497 555 519 for more information



GREEN SQUARE



ZETLAND, NSW
609/28 Ebsworth Street

2
BED

2
BATH



Modern 2-Bedroom Apartment with Timber Floors in Heart of Green Square

This Level 6, 91sqm Apartment features;

- Contemporary kitchen with stone benchtop and Smeg appliances
- Living and dining area with timber floorboards, great for entertaining
- Well-appointed bedrooms with floor to ceiling built-in wardrobes
- Sleek bathrooms with plenty of storage, ensuite off main bedroom
- Large South-West facing balcony with access from living area
- Concealed study nook off entry
- Internal laundry with dryer included
- Secure basement storage cage included
- Ducted A/C, video intercom and NBN connectivity
- Walking distance to Green Square Train Station, Woolworths and The Social Corner

More Apartments Available!

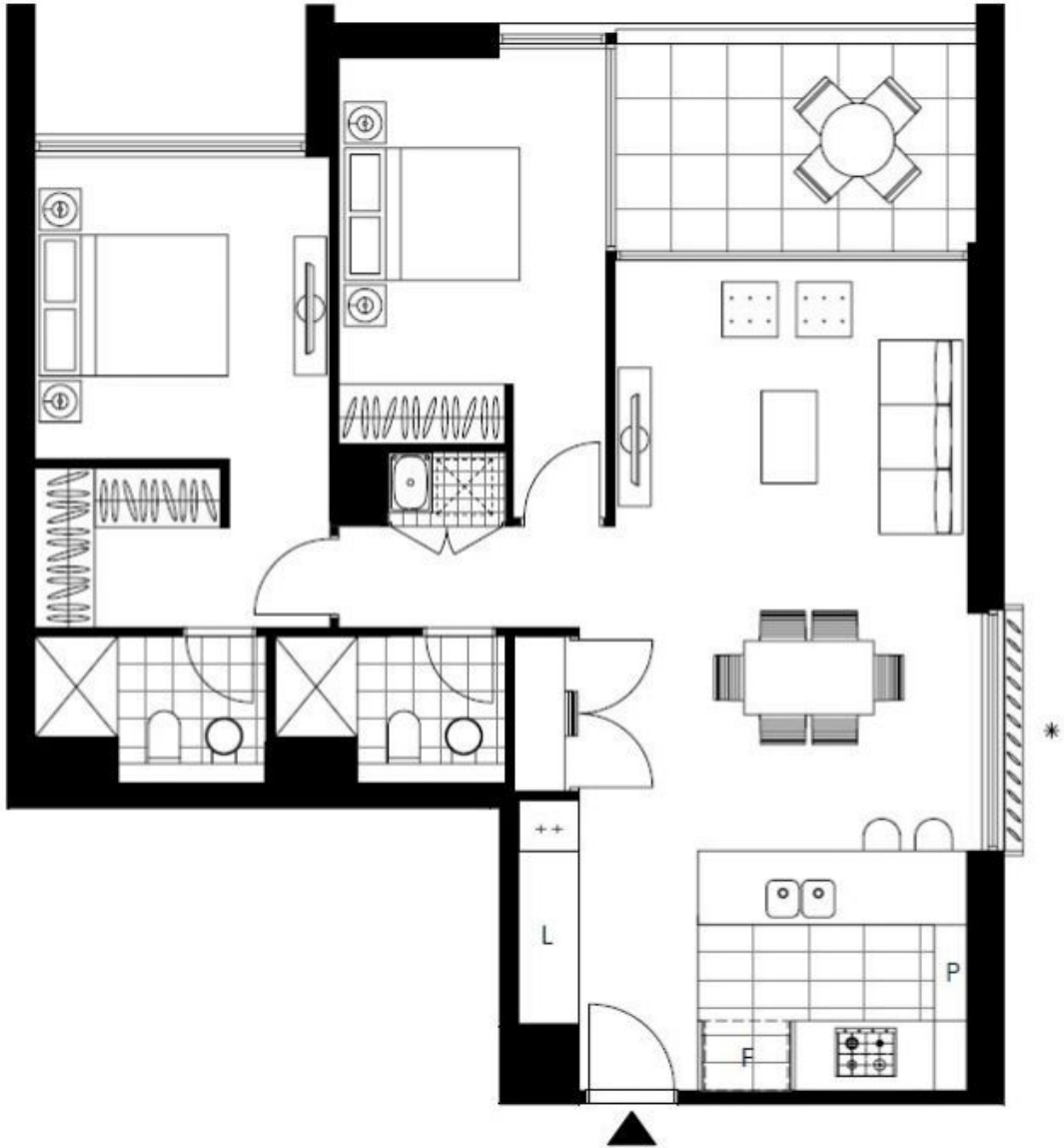
Contact: Carmen Whiteley
02 8588 8888
0497 555 519

Type: Apartment

Date Available: 07/11/2020

Bond: \$2600

<https://www.resbymirvac.com>



Plans shown are only indicative of layout. Dimensions are approximate.

ZETLAND, NSW
609/28 Ebsworth Street