



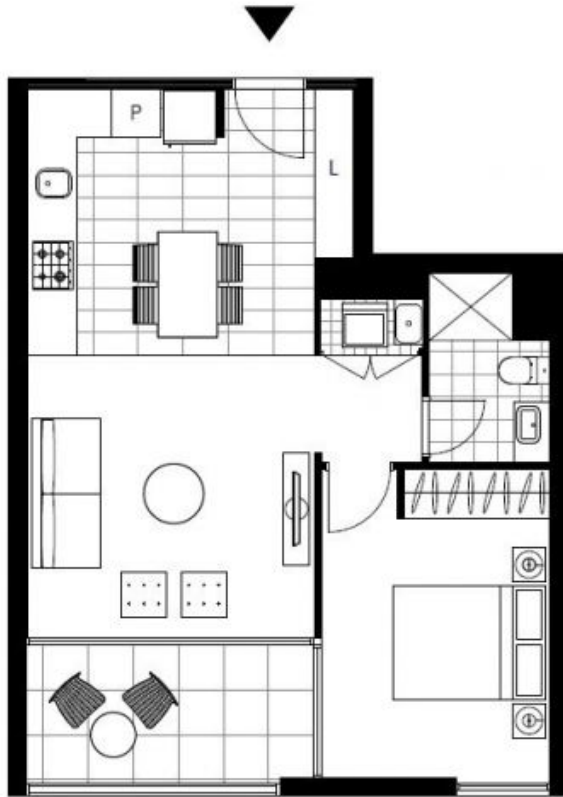
GLEBE, NSW
505/122 Ross Street

1 BED **1** BATH **1** CAR 

- This 56sqm, 5th floor Apartment offers:
Rare 1-Bedroom Apartment with Parking in Harold Park
- Large bedroom with floor to ceiling built-in wardrobes
 - Spacious north-facing balcony with direct access to bedroom and living area.
 - Stone benchtops, Miele appliances and tiled floor kitchen
 - Modern bathroom with vanity storage
 - Open plan living and dining area
 - Internal laundry with washer and dryer included
 - Secure basement and storage cage
 - Car space
 - Ducted air conditioning, video intercom and NBN connectivity
 - 500m to buses, light rail and the Tramsheds

Deposit Taken

Contact: Matthew Matthews
02 8588 8888
0418 266 590
Type: Apartment
Date Available: 02/02/2019
Bond: \$2520
<https://www.resbymirvac.com>



Plans shown are only indicative of layout. Dimensions are approximate.

GLEBE, NSW
505/122 Ross Street