



GLEBE, NSW
505/122 Ross Street

1	1	1	
BED	BATH	CAR	

- This 56sqm, 5th floor Apartment offers:
 Rare 1-Bedroom Apartment with Parking in Harold Park
- Large bedroom with floor to ceiling built-in wardrobes
 - Spacious north-facing balcony with direct access to bedroom and living area.
 - Stone benchtops, Miele appliances and tiled floor kitchen
 - Modern bathroom with vanity storage
 - Open plan living and dining area
 - Internal laundry with washer and dryer included
 - Secure basement and storage cage
 - Car space
 - Ducted air conditioning, video intercom and NBN connectivity
 - 500m to buses, light rail and the Tramsheds

Deposit Taken

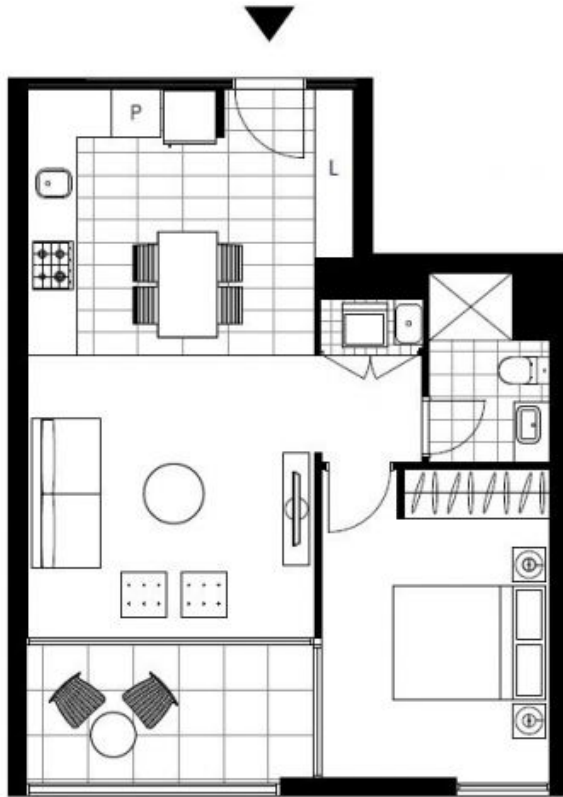
Contact: Matthew Matthews
 02 8588 8888
 0418 266 590

Type: Apartment

Date Available: 02/02/2019

Bond: \$2520

<https://www.resbymirvac.com>



Plans shown are only indicative of layout. Dimensions are approximate.

GLEBE, NSW
505/122 Ross Street