



ZETLAND, NSW

1703/6 Ebsworth Street

1
BED

1
BATH



High-Rise 1-Bedroom Apartment with City Views in Zetland

This Level 17, 61sqm Apartment features;

- Large bedroom with floor to ceiling built-in wardrobe
- Open plan living and dining area flowing onto balcony
- Modern kitchen with stone island benchtop and built-in appliances
- Sunny balcony with city and district views
- Internal laundry with dryer included
- Sleek bathroom with plenty of storage
- Secure basement storage cage included
- Ducted A/C, video intercom and NBN connectivity
- Close to Woolworths, The Social Corner and Green Square Train Station

\$550 per week - High Level Apartment!

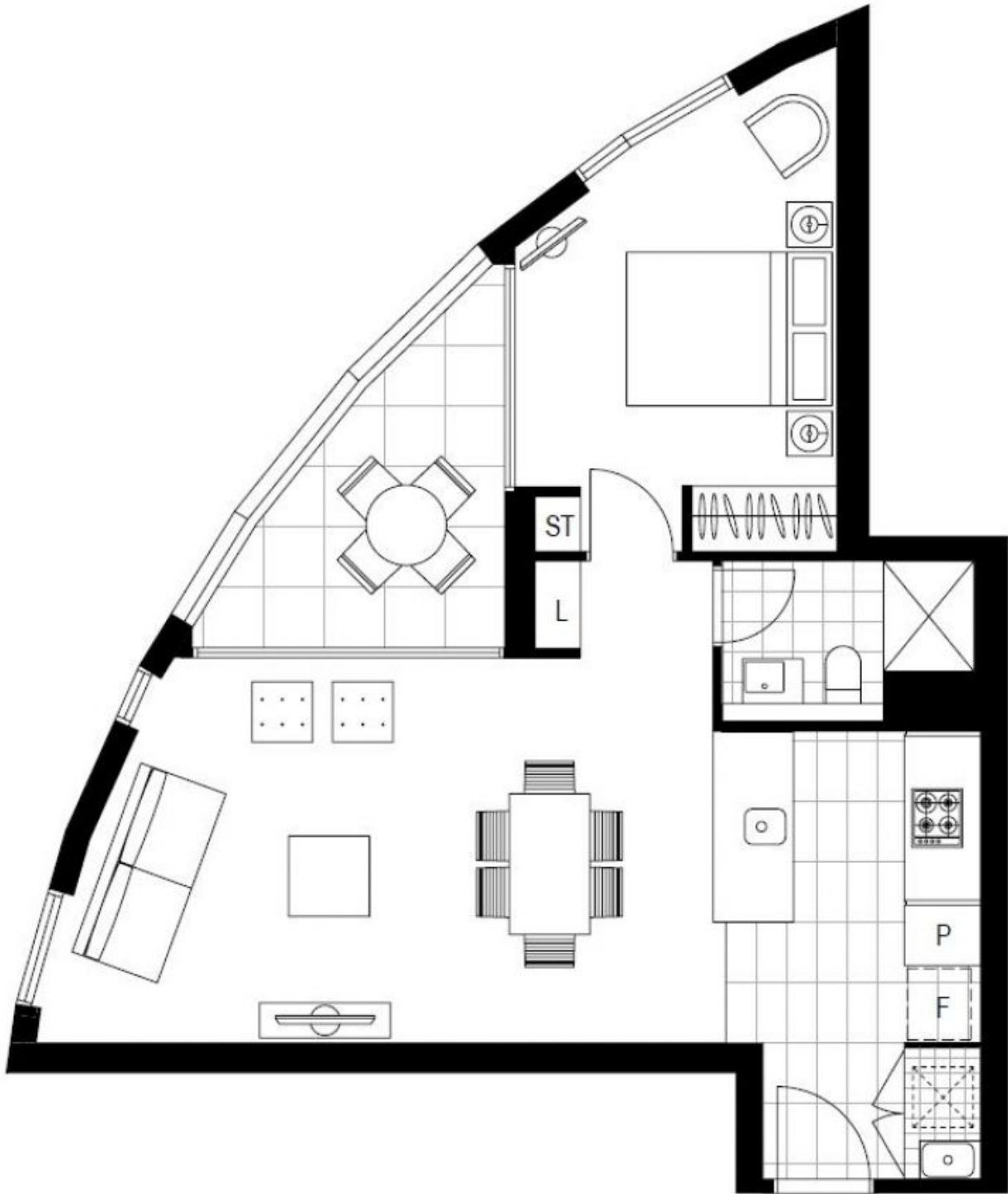
Contact: Carmen Whiteley
02 8588 8888
0497 555 519

Type: Apartment

Date Available: 13/02/2021

Bond: \$2200

<https://www.resbymirvac.com>



Plans shown are only indicative of layout. Dimensions are approximate.

ZETLAND, NSW
1703/6 Ebsworth Street