



GLEBE, NSW

601/5 Grattan Close

1
BED

1
BATH



Garden Facing 1-Bedroom Apartment in Harold Park

This 51sqm, 6th floor Apartment has to offer:

- Large bedroom with floor to ceiling built-in wardrobe
- Balcony with view over internal gardens
- Stone benchtops and Miele appliances in kitchen
- Modern bathroom with vanity storage
- Open plan living and dining area
- Internal laundry with washer and dryer included
- Secure basement storage cage
- Ducted A/C, video intercom and NBN connectivity
- Walking distance to buses, the light rail and the Tramsheds

570

Contact:

Naz Sabzpouri
02 8588 8888
0401 545 440

Type:

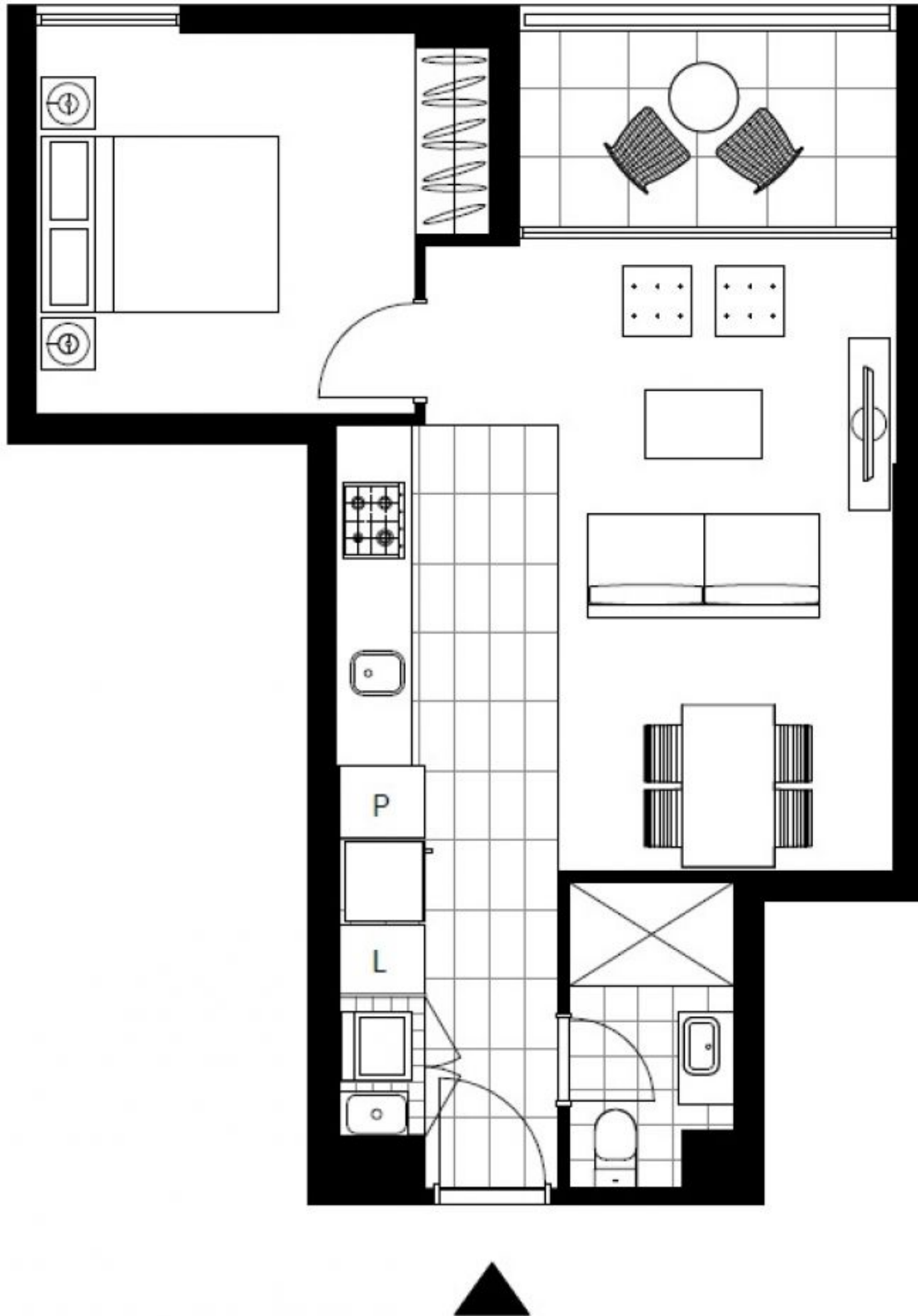
Apartment

Date Available: 19/09/2018

Bond: \$2280

<https://www.resbymirvac.com>

****images indicative only****



Plans shown are only indicative of layout. Dimensions are approximate.

GLEBE, NSW
601/5 Grattan Close