

GLEBE, NSW

408/147 Ross Street

1
BED

1
BATH



Deposit Taken!

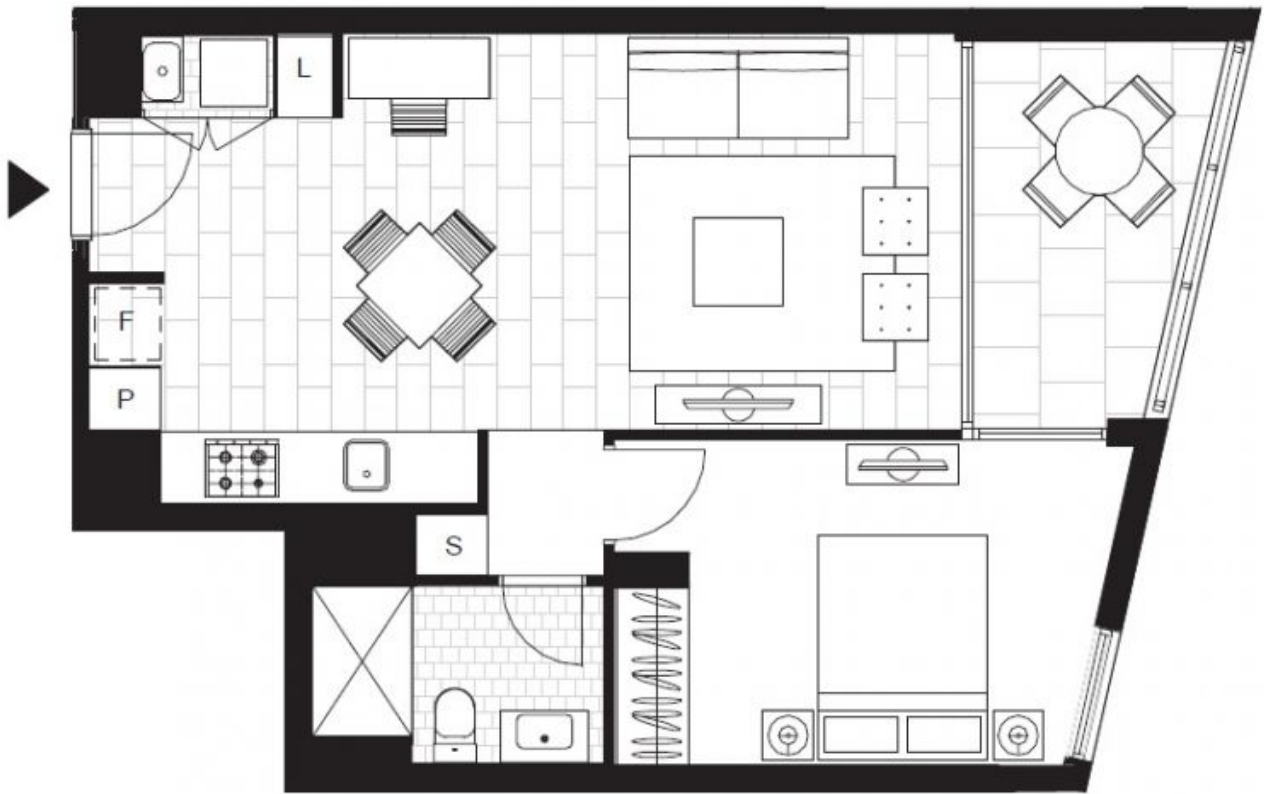
- This spacious, 56sqm 1-Bedroom Apartment has to offer;
- 1-Bedroom Apartment in Harold Park with Park Views
 - Modern kitchen with stone benchtops with Miele appliances
 - Sleek bathroom with plenty of storage
 - Large bedroom with built-in wardrobe
 - Internal washing machine & dryer included
 - South-facing balcony with park glimpses (opening soon)
 - Storage cage included
 - Ducted A/C, video intercom and NBN connectivity
 - 450m to buses, the light rail and the Tramsheds

Deposit Taken

Contact: Matthew Matthews
02 8588 8888
0418 266 590
Stuart Nohra
02 8588 8888
0432 206 000

Type: Apartment
Date Available: 17/12/2018
Bond: \$2280
<https://www.resbymirvac.com>

images indicative only



Plans shown are only indicative of layout. Dimensions are approximate.

GLEBE, NSW
408/147 Ross Street