

## GLEBE, NSW

408/147 Ross Street

**1**  
BED

**1**  
BATH



### Deposit Taken!

This spacious, 56sqm 1-Bedroom Apartment has to offer;

1-Bedroom Apartment in Harold Park with Park Views

- Modern kitchen with stone benchtops with Miele appliances
- Sleek bathroom with plenty of storage
- Large bedroom with built-in wardrobe
- Internal washing machine & dryer included
- South-facing balcony with park glimpses (opening soon)
- Storage cage included
- Ducted A/C, video intercom and NBN connectivity
- 450m to buses, the light rail and the Tramsheds

**\*\*images indicative only\*\***

### Deposit Taken

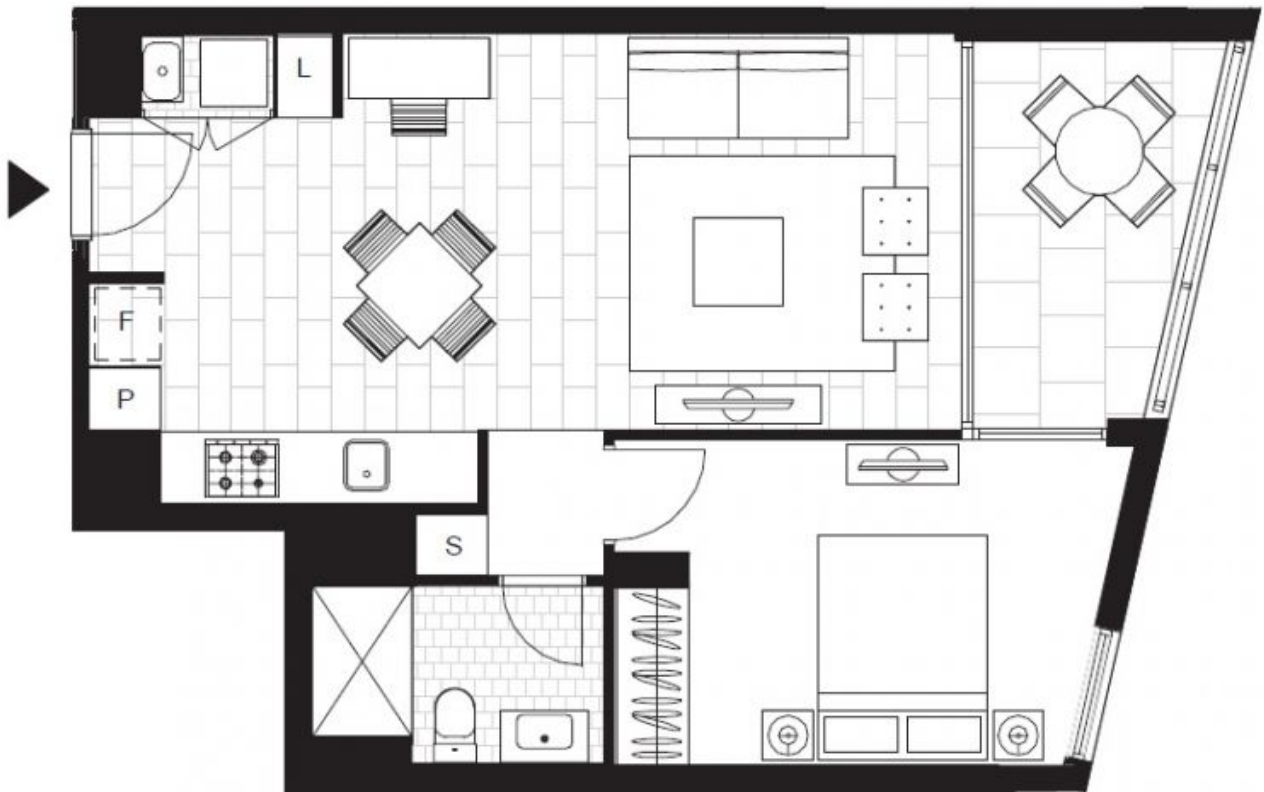
**Contact:** Matthew Matthews  
02 8588 8888  
0418 266 590  
Stuart Nohra  
02 8588 8888  
0432 206 000

**Type:** Apartment

**Date Available:** 17/12/2018

**Bond:** \$2280

**<https://www.resbymirvac.com>**



Plans shown are only indicative of layout. Dimensions are approximate.

**GLEBE, NSW**  
408/147 Ross Street