



## GLEBE, NSW

7113/2 Cullen Close

**1**  
BED

**1**  
BATH



### 1-Bedroom Apartment in Harold Park with Garden Views

This 61sqm, ground floor apartment has to offer:

- Large bedroom with floor to ceiling built-in wardrobe
- Balcony with view over internal gardens
- Stone benchtops and Miele appliances in kitchen
- Modern bathroom with vanity storage
- Open plan living and dining area
- Internal laundry with washer and dryer included
- Secure basement storage cage included
- Ducted A/C, video intercom and NBN connectivity
- Walking distance to buses, light rail and the Tramsheds
- Apartment is unfurnished

**590**

**Contact:**

Naz Sabzpouri  
02 8588 8888  
0401 545 440

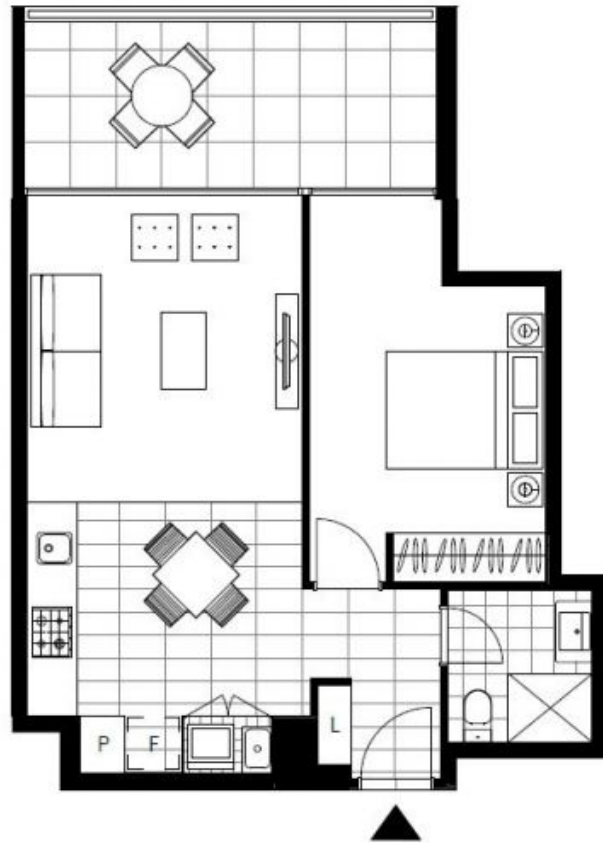
**Type:**

Apartment

**Date Available:** 04/08/2018

**Bond:** \$2360

<https://www.resbymirvac.com>



LEVEL 1

Plans shown are only indicative of layout. Dimensions are approximate.

**GLEBE, NSW**  
7113/2 Cullen Close