



ZETLAND, NSW

1006/8 Ebsworth Street

3 BED **2** BATH **1** CAR 

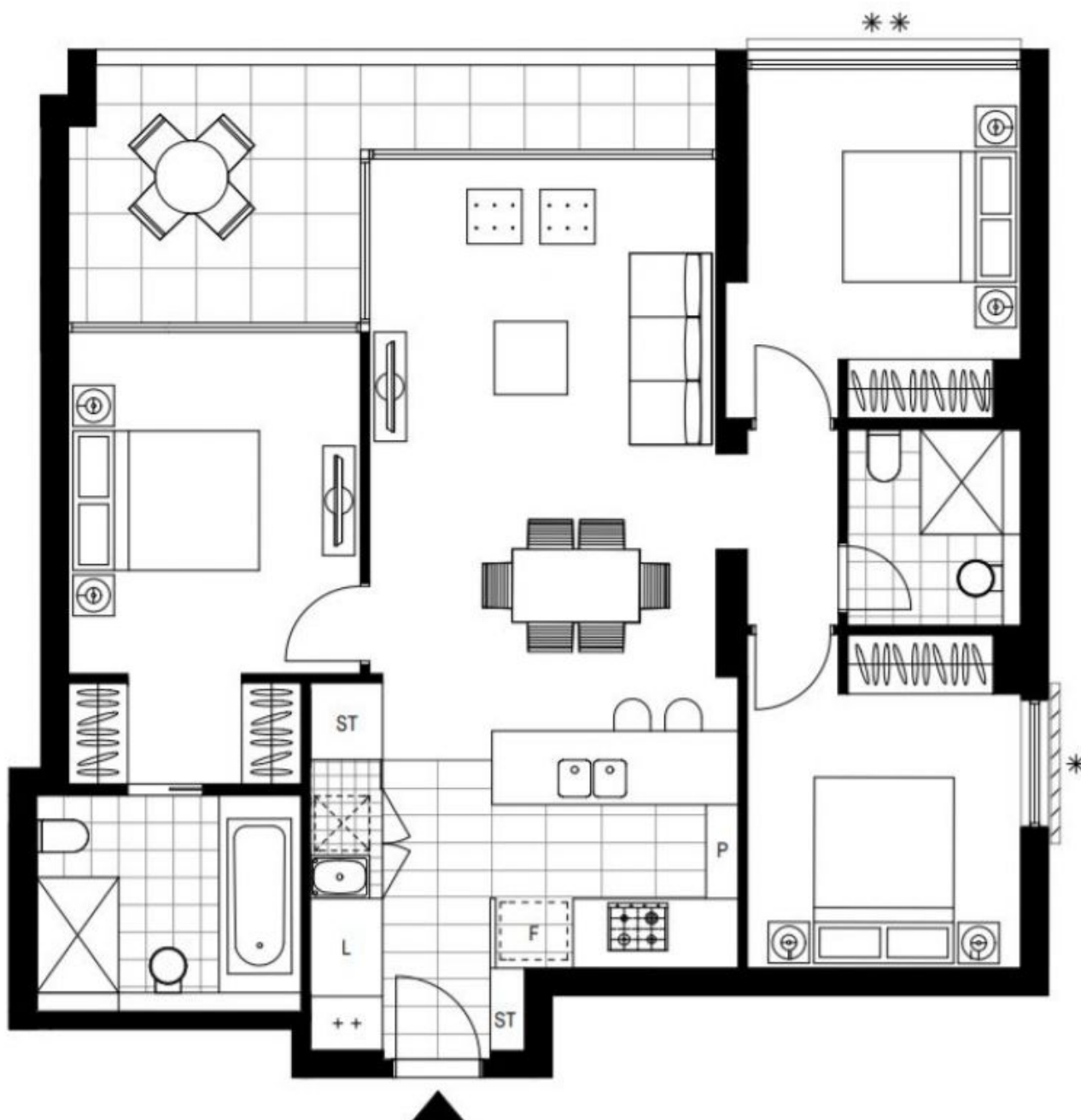
Top-Floor 3-Bedroom Apartment with Parking in Green Square, Zetland

This modern, 10th floor apartment features:

- Generous bedrooms with floor-to-ceiling built-in wardrobes
- Functional living and dining area, ideal for entertaining
- Modern kitchen with stone benchtops and built-in appliances
- Integrated refrigerator included
- Sleek bathrooms with plenty of vanity storage, bath in ensuite
- North-East facing balcony, with city views
- Internal laundry with dryer included
- Secure car space and storage cage included
- Ducted A/C, video intercom and NBN connectivity
- 300m to Woolworths, Green Square Train Station (10mins to the City) and Green Square Library

DEPOSIT TAKEN - FIRST INSPECTION!

Contact: Carmen Whiteley
02 8588 8888
0497 555 519
Type: Apartment
Date Available: 26/04/2021
Bond: \$3600
<https://www.resbymirvac.com>



Plans shown are only indicative of layout. Dimensions are approximate.

ZETLAND, NSW
1006/8 Ebsworth Street