



ZETLAND, NSW

1006/28 Ebsworth Street

1
BED

1
BATH



Top-Floor, 1 Bedroom Apartment with Separate Study in Zetland

This 68sqm Mirvac apartment features:

- Large bedroom with generous built-in wardrobe
- Separate study room, perfect for a home office or nursery
- Open-plan living and dining area, leading to the balcony
- Modern kitchen with stone benchtops and Smeg appliances
- Sleek bathroom with plenty of vanity storage
- Internal laundry with dryer included
- Secure storage cage included
- Ducted A/C, video intercom and NBN connectivity
- 300m to Woolworths, The Social Corner and Green Square Train Station (10mins to the City)

DEPOSIT TAKEN

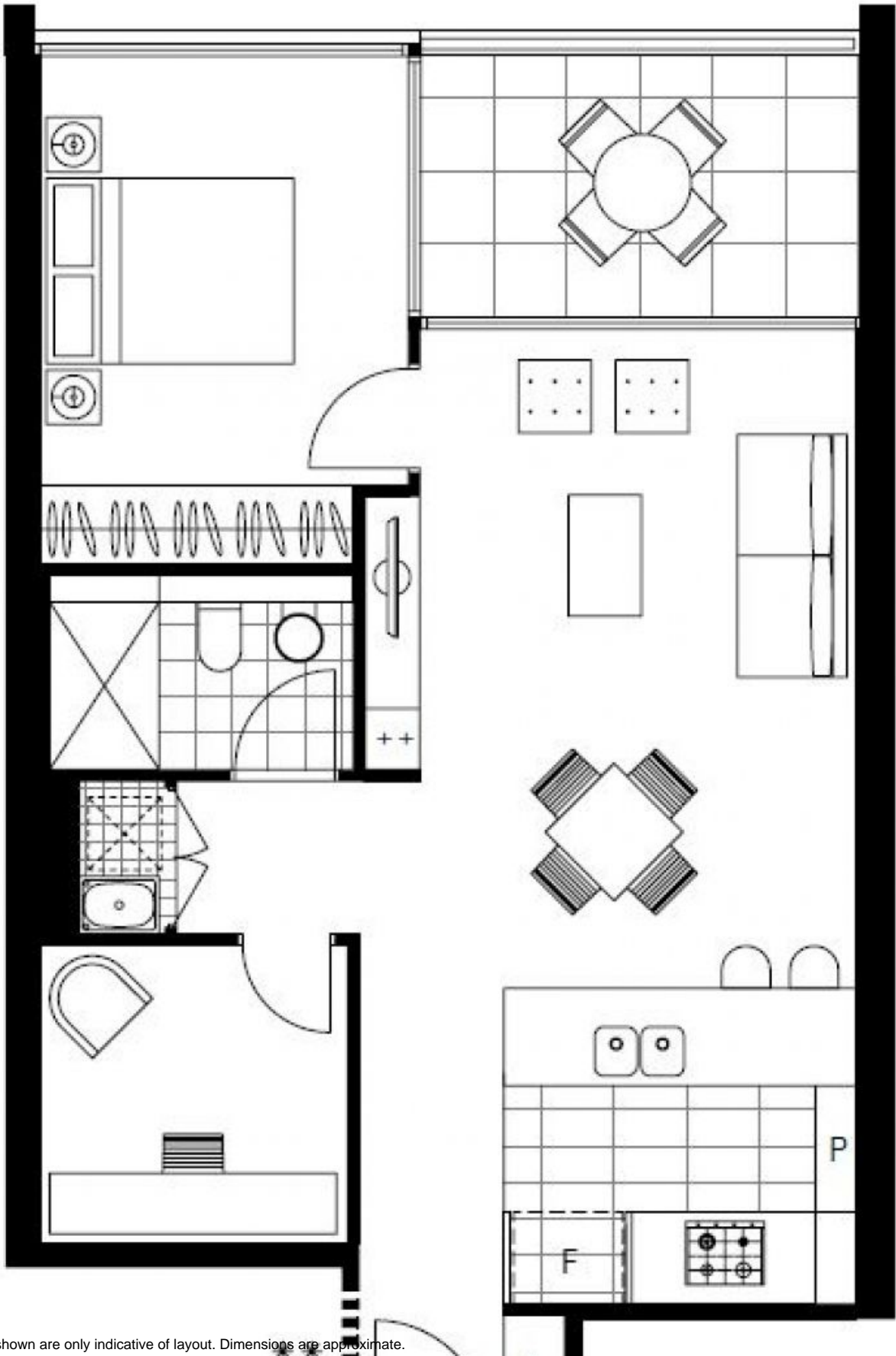
Contact: Carmen Whiteley
02 8588 8888
0497 555 519

Type: Apartment

Date Available: 19/12/2020

Bond: \$2200

<https://www.resbymirvac.com>



Plans shown are only indicative of layout. Dimensions are approximate.

ZETLAND, NSW
1006/28 Ebsworth Street

