

GLEBE, NSW
217/2 Scotsman Street

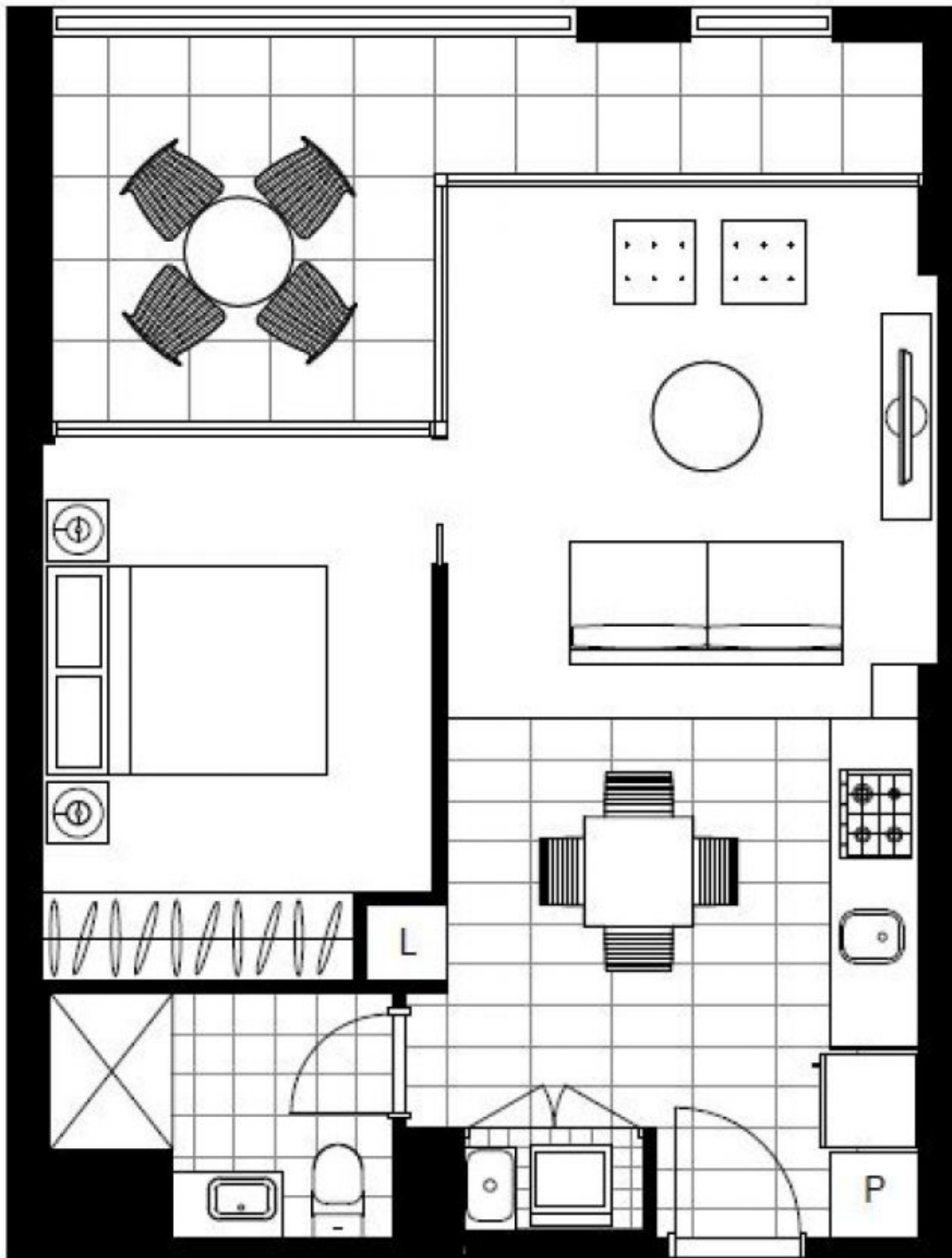
1 BED **1** BATH



Deposit Taken!
This 55sqm, 2nd floor Apartment features:
Bright 1-Bedroom Apartment in Harold Park

- Large bedroom with generous built-in wardrobe
- Spacious living and dining area, leading to the balcony
- Contemporary kitchen with stone benchtop and Miele appliances
- North-East facing balcony, overlooking the internal gardens
- Sleek bathroom with vanity storage
- Internal laundry with washing and dryer included
- Secure storage cage included
- Ducted A/C, video intercom and NBN connectivity
- 450m to the Heritage-listed Tramsheds, light rail station and public transport

Deposit Taken!
Contact: Naz Sabzpour
02 8588 8888
0401 545 440
Type: Apartment
Date Available: 15/12/2020
Bond: \$1800
<https://www.resbymirvac.com>



Plans shown are only indicative of layout. Dimensions are approximate.

GLEBE, NSW
217/2 Scotsman Street