

**GLEBE, NSW**  
217/2 Scotsman Street

**1** BED **1** BATH



**Deposit Taken!**

- This 55sqm, 2nd floor Apartment features:  
Bright 1-Bedroom Apartment in Harold Park
- Large bedroom with generous built-in wardrobe
  - Spacious living and dining area, leading to the balcony
  - Contemporary kitchen with stone benchtop and Miele appliances
  - North-East facing balcony, overlooking the internal gardens
  - Sleek bathroom with vanity storage
  - Internal laundry with washing and dryer included
  - Secure storage cage included
  - Ducted A/C, video intercom and NBN connectivity
  - 450m to the Heritage-listed Tramsheds, light rail station and public transport

**Deposit Taken!**

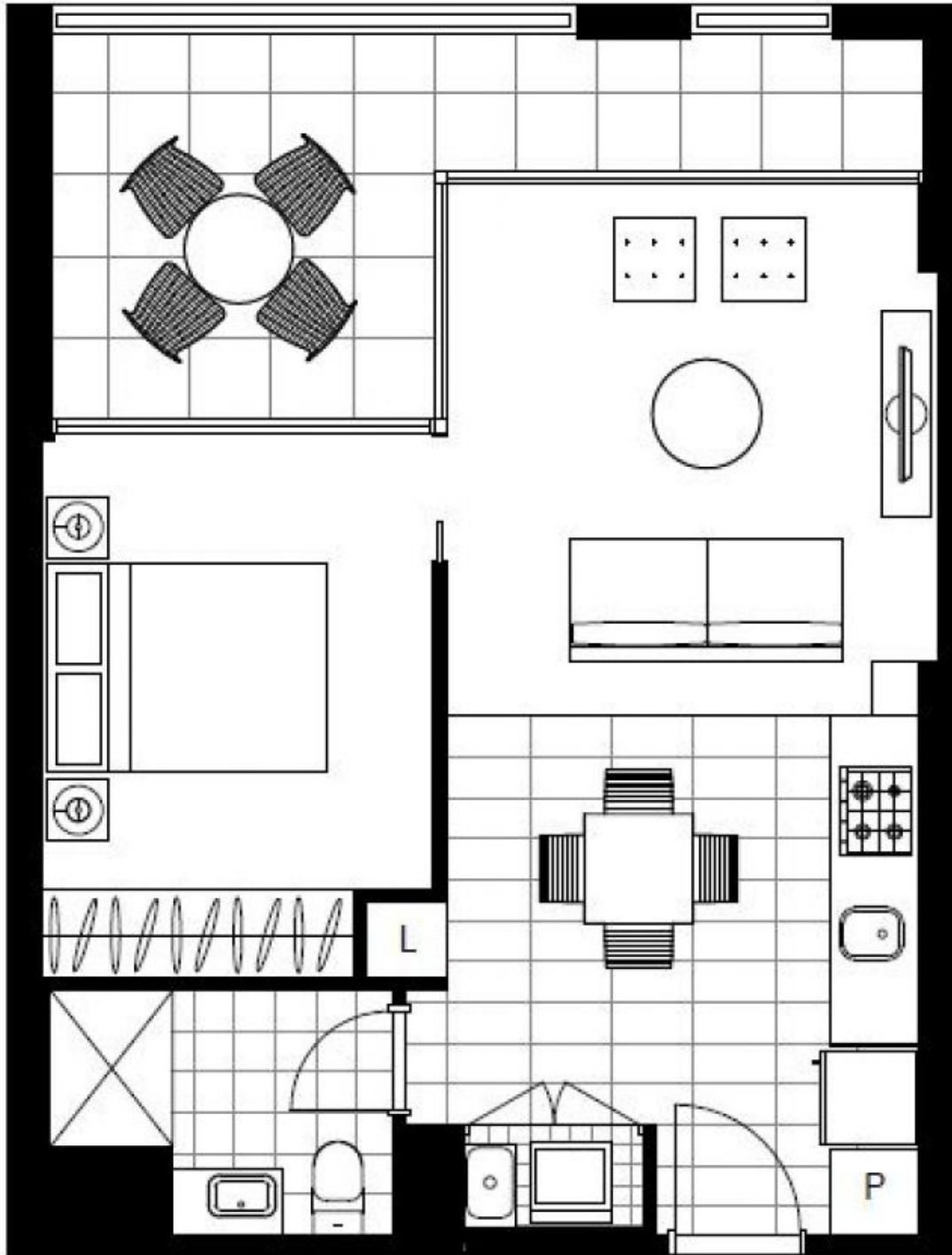
**Contact:** Naz Sabzpouri  
02 8588 8888  
0401 545 440

**Type:** Apartment

**Date Available:** 15/12/2020

**Bond:** \$1800

<https://www.resbymirvac.com>



Plans shown are only indicative of layout. Dimensions are approximate.

**GLEBE, NSW**  
217/2 Scotsman Street