



## GLEBE, NSW

608/95 Ross Street

1  
BATH



### Modern Open-Plan Studio Apartment in Harold Park

This 47sqm, 6th floor Apartment offers;

- Sleeping space separated with sliding partition
- Built-in wardrobe with plenty of storage
- Modern stone galley kitchen with Miele appliances
- Sleek bathroom with vanity storage
- Internal laundry with washer and dryer included
- Secure basement storage cage included
- Ducted A/C, video intercom and NBN connectivity
- Walking distance to buses, the light rail and the Tramsheds

\*\*Images indicative only\*\*

500

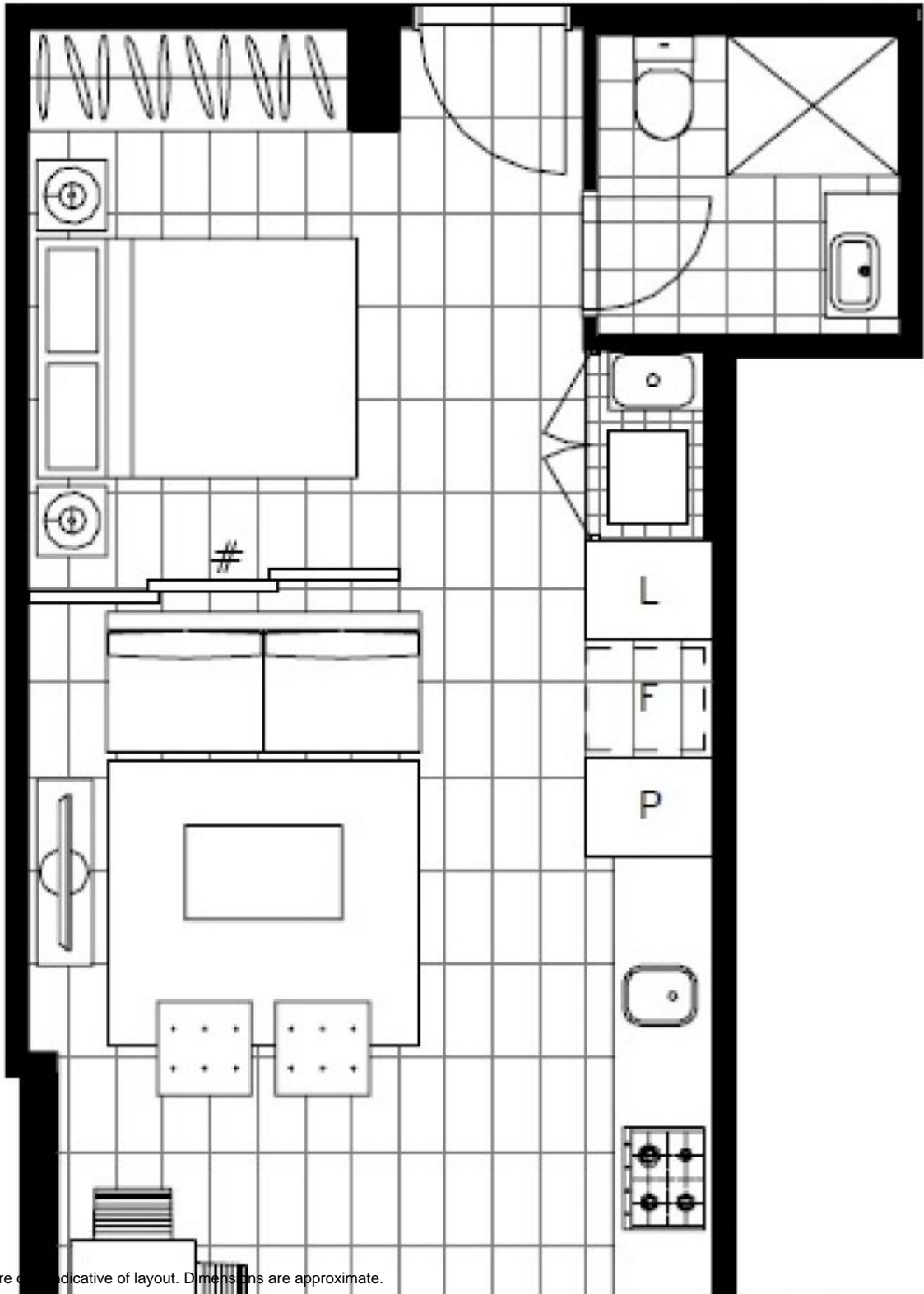
Contact: Stuart Nohra  
02 8588 8888  
0432 206 000

Type: Studio

Date Available: 13/08/2018

Bond: \$2000

<https://www.resbymirvac.com>



Plans shown are indicative of layout. Dimensions are approximate.

**GLEBE, NSW**  
608/95 Ross Street