

DEPOSIT TAKEN

More apartments available for lease in Green Square - Zetland!

Please call 0497 555 519 or email carmen.whiteley@resbymirvac.com for more information



GREEN SQUARE



ZETLAND, NSW 203/8 Ebsworth Street

2
BED

1
BATH



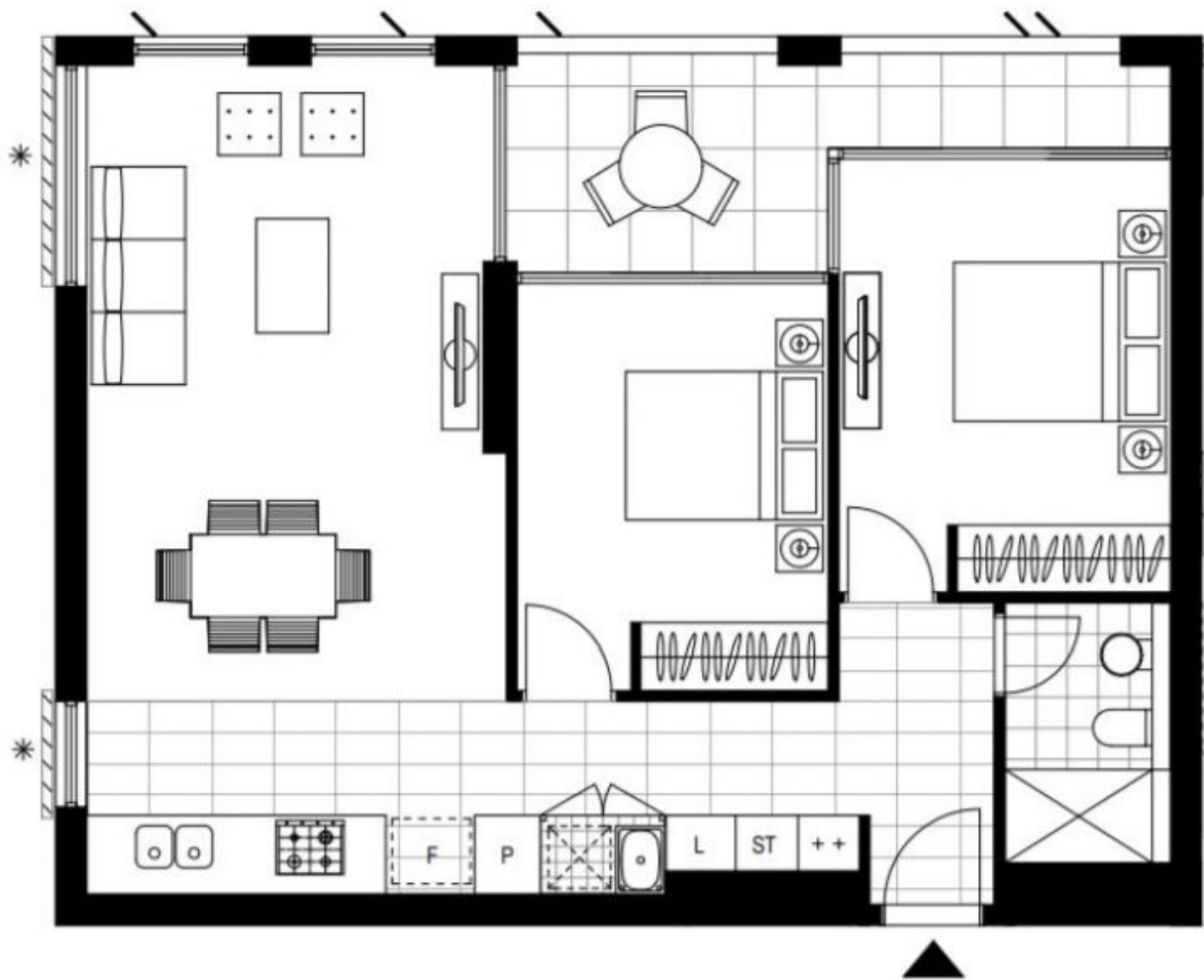
Near New 2-Bedroom Apartment near Green Square Train Station

This Level 2, 81sqm 2-Bedroom Apartment features;

- Open plan living and dining area flowing onto balcony
- Modern kitchen with stone benchtop and Smeg Appliance
- West facing balcony with access from living area
- Large bedrooms with floor to ceiling built-in wardrobes
- Sleek bathroom with plenty of storage
- Internal laundry with dryer included
- Secure storage cage included
- Ducted A/C, video intercom and NBN connectivity
- Exclusive rooftop gardens with BBQ facilities for resident use
- 300m to Woolworths, The Social Corner and Green Square Train Station (10mins to the City)

Call 0497 555 519 for similar apartments!

Contact: Carmen Whiteley
02 8588 8888
0497 555 519
Type: Apartment
Date Available: 10/07/2020
Bond: \$2320
<https://www.resbymirvac.com>



Plans shown are only indicative of layout. Dimensions are approximate.

ZETLAND, NSW
203/8 Ebsworth Street