

ZETLAND, NSW

2302/6 Ebsworth Street

2 **2** **1** **RES**
BED BATH CAR

Level 23, 2-Bedroom Apartment with Parking in Zetland

This 88sqm, 2-Bedroom Apartment features:

- Large bedrooms with generous built-in wardrobes
- Open-plan living and dining area, leading to the balcony
- Contemporary kitchen with stone benchtops and Smeg appliances
- Stylish bathrooms with plenty of storage
- Sunny balcony, with expansive district views
- Internal laundry with dryer included
- Secure car space and storage cage included
- Ducted A/C, video intercom and NBN connectivity
- 300m to Woolworths, The Social Corner and Green Square Train Station (10mins to the City)

DEPOSIT TAKEN - FIRST INSPECTION!

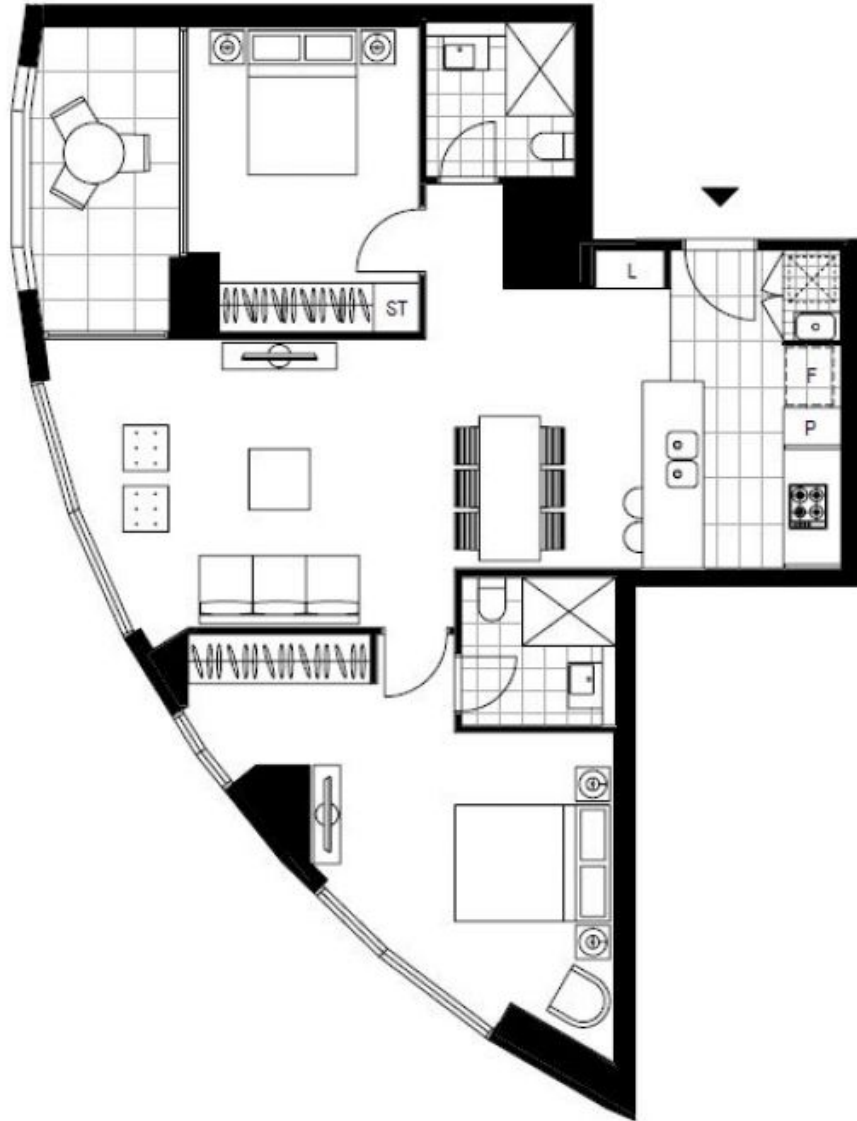
Contact: Carmen Whiteley
02 8588 8888
0497 555 519

Type: Apartment

Date Available: 07/03/2020

Bond: \$3320

<https://www.resbymirvac.com>



LEVEL 23

Plans shown are only indicative of layout. Dimensions are approximate.

ZETLAND, NSW
2302/6 Ebsworth Street