

## ZETLAND, NSW

2005/6 Ebsworth Street

**2** BED **2** BATH **1** CAR 

### AVAILABLE NOW! 2-Bedroom Apartment with sweeping City Views!

This North Facing, 103sqm 2-Bedroom Apartment features;

- North facing balcony with access from living and bedrooms
- Open plan living and dining area flowing onto balcony
- Modern kitchen with stone benchtops and Smeg appliances
- Large bedrooms with floor to ceiling built-in wardrobes
- Separate media nook with built-in desk
- Sleek bathrooms with plenty of storage, ensuite off master bedroom with bath
- Internal laundry with dryer included
- Secure basement car space and storage cage included
- Ducted A/C, video intercom and NBN connectivity

**920**

**Contact:**

Matthew Matthews  
02 8588 8888  
0418 266 590

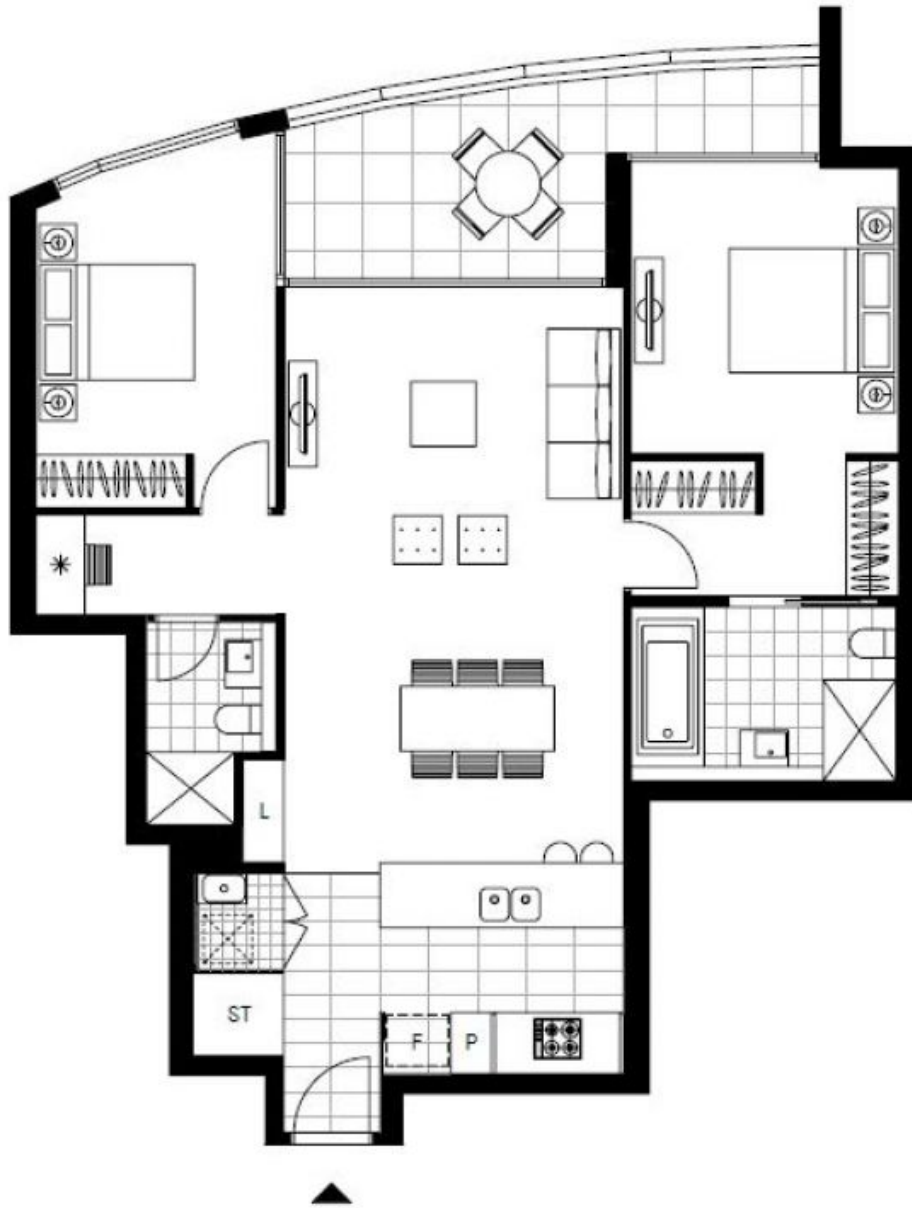
**Type:**

Apartment

**Date Available:** 06/07/2018

**Bond:** \$3680

<https://www.resbymirvac.com>



LEVEL 20

Plans shown are only indicative of layout. Dimensions are approximate.

**ZETLAND, NSW**  
2005/6 Ebsworth Street