



## ZETLAND, NSW

508/8 Ebsworth Street

**2**  
BED

**1**  
BATH



### Brand New 2-Bedroom Apartment with Exclusive Rooftop Access

This Level 5, 81sqm 2-Bedroom Apartment features;

- Open plan living and dining area flowing onto balcony
- Modern kitchen with stone benchtop and built-in appliances
- Large bedrooms with floor to ceiling built-in wardrobes
- South facing balcony with access from living and master bedroom
- Internal laundry with dryer included
- Sleek bathroom with plenty of storage
- Secure storage cage included
- Exclusive Rooftop Garden with City Views
- Ducted A/C, video intercom and NBN connectivity
- Close to Woolworths, 'The Social Corner' and Green Square Train Station.

**700**

**Contact:**

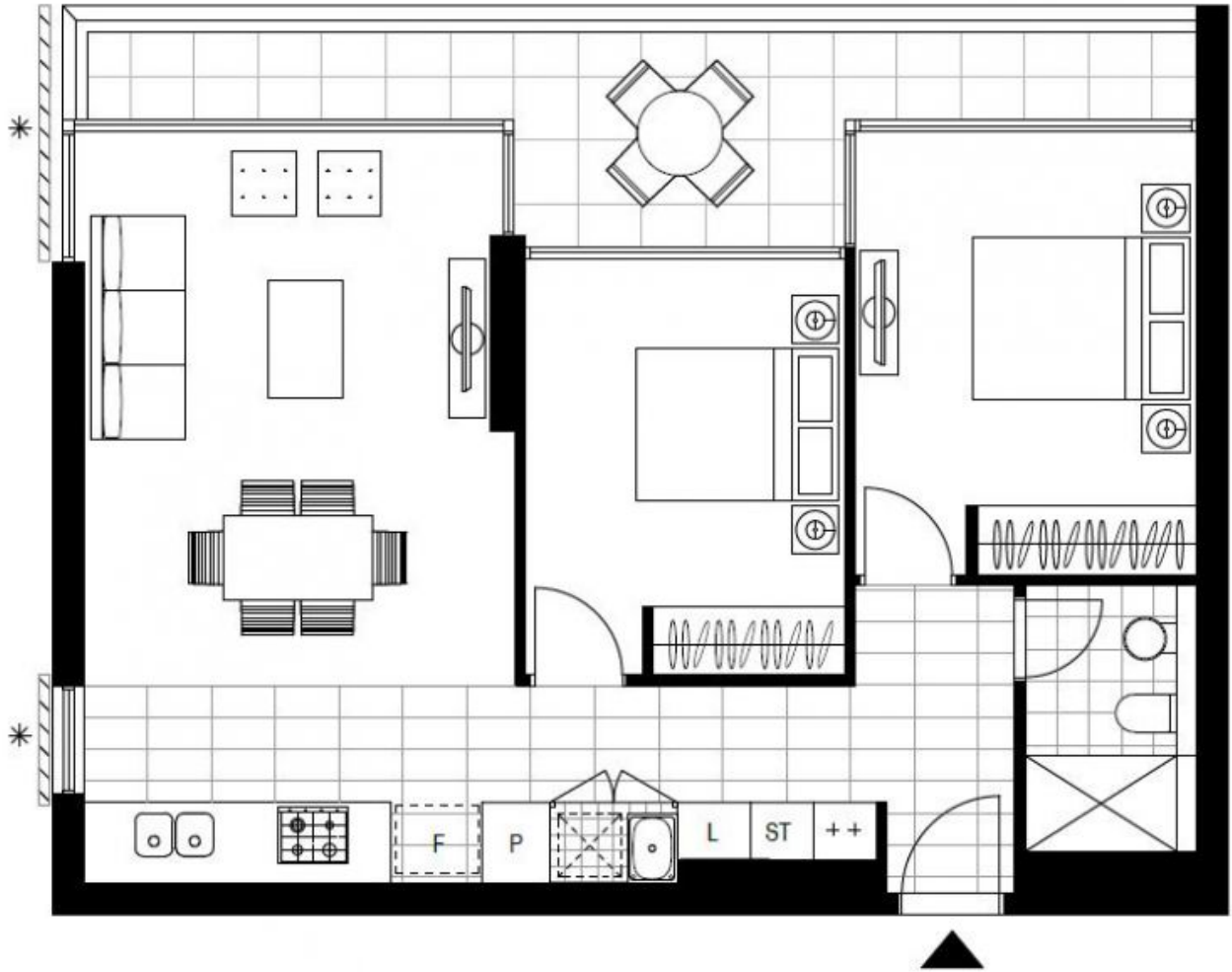
Georgia Glynn  
02 8588 8888  
0481 388 777  
Carmen Whiteley  
02 8588 8888  
0497 555 519

**Type:** Apartment

**Date Available:** 06/07/2018

**Bond:** \$2800

**<https://www.resbymirvac.com>**



Plans shown are only indicative of layout. Dimensions are approximate.

**ZETLAND, NSW**  
508/8 Ebsworth Street