

ZETLAND, NSW

1509/6 Ebsworth Street

2
BED

1
BATH



Sleek & Modern, 2-Bedroom Apartment in Green Square

This Level 15, 75sqm Apartment features;

- Open plan living and dining area flowing onto South-facing balcony
- Modern kitchen with stone benchtops and built-in Smeg appliances
- Large bedrooms with floor to ceiling built-in wardrobes
- Internal laundry with dryer included
- Sleek and stylish bathroom with plenty of storage
- Secure storage cage included
- Ducted A/C, video intercom and NBN connectivity
- 300m to Woolworths, The Social Corner and Green Square Train Station (10mins to the City)

More Apartments Available!

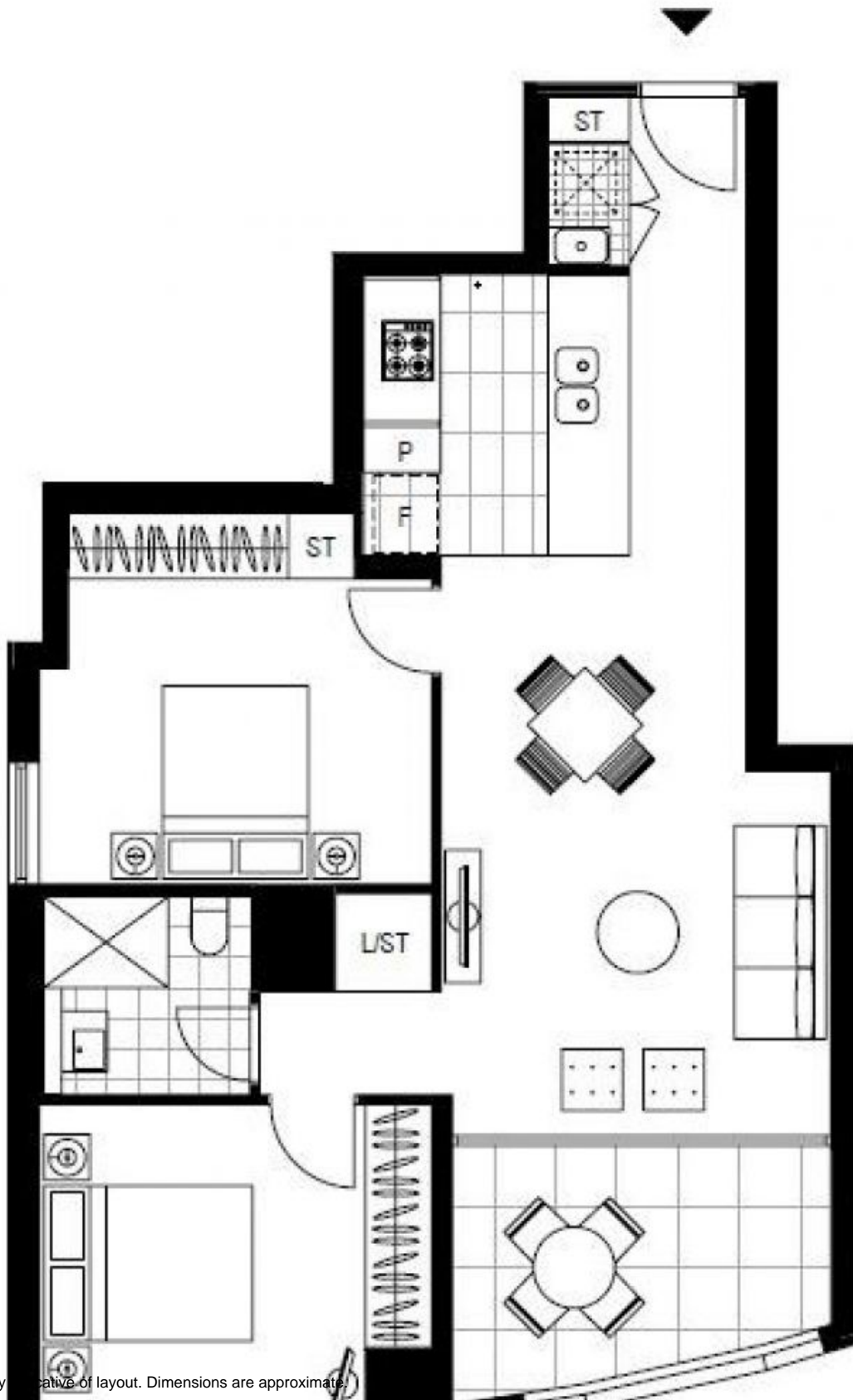
Contact: Carmen Whiteley
02 8588 8888
0497 555 519

Type: Apartment

Date Available: 12/11/2020

Bond: \$2240

<https://www.resbymirvac.com>



Plans shown are only indicative of layout. Dimensions are approximate.

ZETLAND, NSW
1509/6 Ebsworth Street