



**GLEBE, NSW**  
603/119 Ross Street

**2** BED **2** BATH **1** CAR 

**Deposit Taken!**

- This 116sqm over-size park facing 2-Bedroom Apartment offers;  
Sunny Park-Facing 2-Bedroom Apartment in Harold Park
- Modern kitchen with stone bench top and Miele appliances
  - Well-appointed bedrooms with floor to ceiling built-in wardrobes
  - Second balcony accessible from the master bedroom
  - Sleek bathroom with plenty of storage and bath in ensuite
  - Large entertainer's balcony with access from living area
  - Internal laundry with washing machine and dryer included
  - Secure basement car space plus storage cage included
  - Ducted Air conditioning, video intercom and NBN connectivity
  - 500m to buses, the light rail and Tramsheds

**Deposit Taken**

**Contact:** Matthew Matthews  
02 8588 8888  
0418 266 590

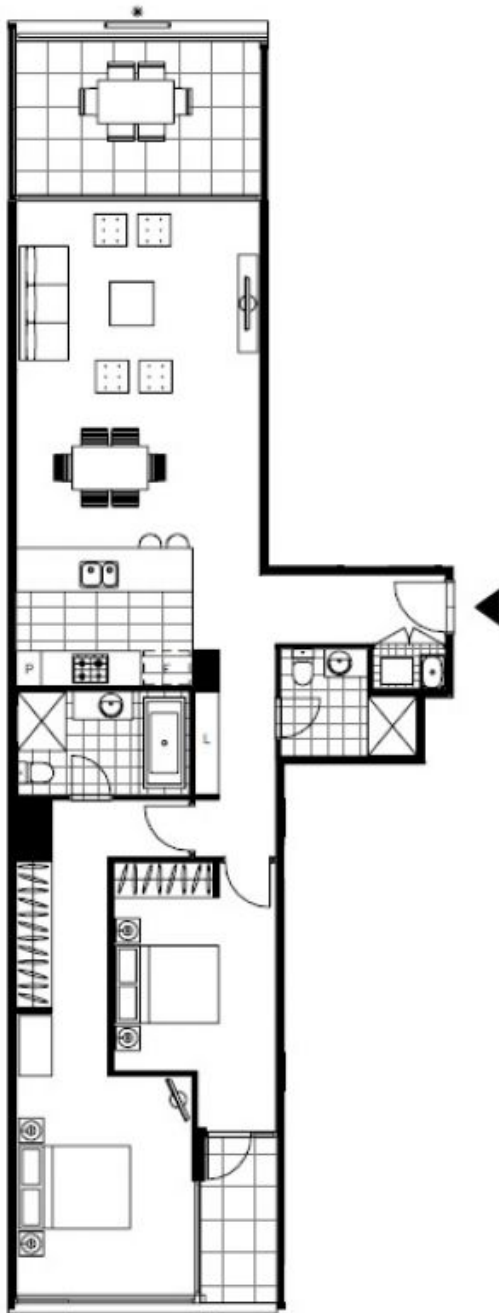
**Type:** Apartment

**Date Available:** 27/02/2020

**Bond:** \$3600

<https://www.resbymirvac.com>

For more information, please contact Real Estate Services by Mirvac on 02 8588 8888 or email [enquiries@resbymirvac.com](mailto:enquiries@resbymirvac.com).



LEVEL 4, 6

Plans shown are only indicative of layout. Dimensions are approximate.

**GLEBE, NSW**  
603/119 Ross Street