

ZETLAND, NSW

511/6 Ebsworth Street

2 BED **1** BATH



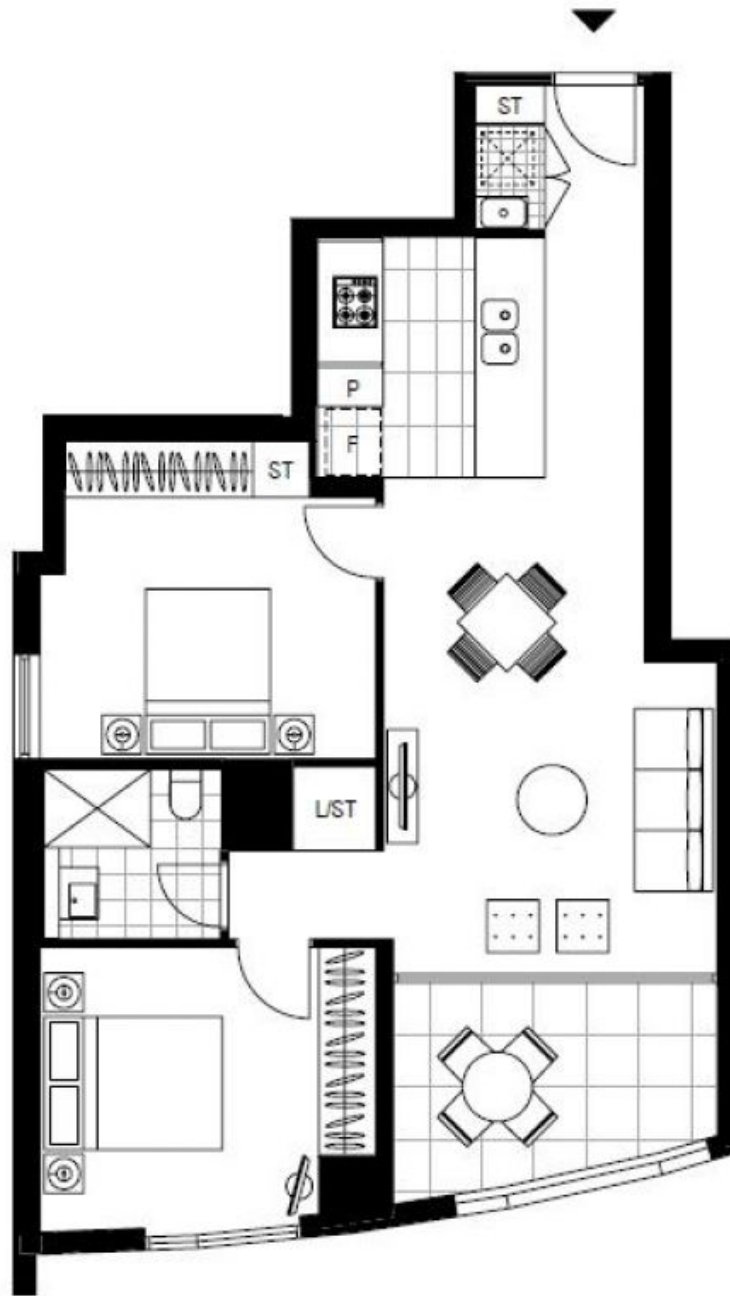
Modern 2-Bedroom Apartment near Green Square Station!

This 75sqm, 5th floor apartment features:

- Oversized bedrooms with floor-to-ceiling built-in wardrobes
- Spacious living and dining area, with access to balcony
- Quality kitchen with stone benchtops and built-in appliances
- Contemporary bathroom with plenty of vanity storage
- Internal laundry with dryer included
- Secure storage cage included
- Ducted A/C, video intercom and NBN connectivity
- 300m to Woolworths, Green Square Train Station (10mins to the City) and Green Square Library

DEPOSIT TAKEN - FIRST INSPECTION!

Contact: Carmen Whiteley
02 8588 8888
0497 555 519
Type: Apartment
Date Available: 18/03/2021
Bond: \$2320
<https://www.resbymirvac.com>



LEVEL 5

Plans shown are only indicative of layout. Dimensions are approximate.

ZETLAND, NSW
511/6 Ebsworth Street