

ZETLAND, NSW
1802/6 Ebsworth Street

2 BED **2** BATH **1** CAR 

Stunning Views from Level 18, 2-Bedroom Apartment with Parking!

This High-Rise, 88sqm Apartment features;

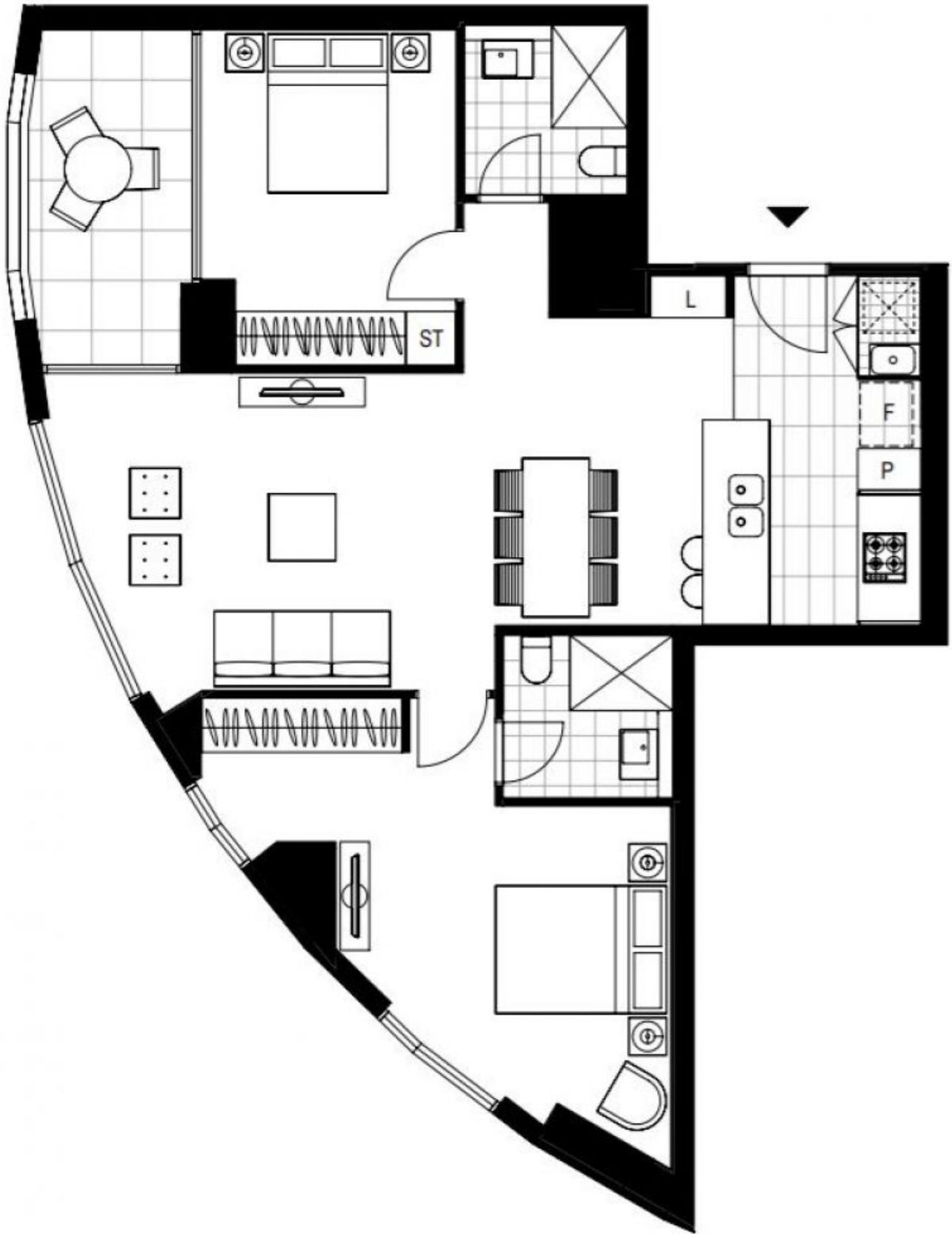
- Open plan living and dining area flowing onto balcony
- Modern kitchen with stone benchtops, integrated fridge and Smeg appliances
- Large bedrooms with floor to ceiling built-in wardrobes
- Sleek bathrooms with plenty of storage, ensuite off master bedroom
- Sunny balcony with access from living and second bedroom
- Internal laundry with dryer included
- Secure basement car space and storage cage included
- Ducted A/C, video intercom and NBN connectivity
- 300m to Woolworths, The Social Corner and Green Square Train Station (10mins to the City)

More Apartments Available!

Contact: Carmen Whiteley
02 8588 8888
0497 555 519

Type: Apartment
Date Available: 29/08/2020
Bond: \$2960

<https://www.resbymirvac.com>



Plans shown are only indicative of layout. Dimensions are approximate.

ZETLAND, NSW
1802/6 Ebsworth Street