

ZETLAND, NSW
1805/6 Ebsworth Street

2 BED **2** BATH **1** CAR



Sweeping City Views from Level 18 2-Bedroom Apartment + Media Nook in Zetland!

This North Facing, 103sqm 2-Bedroom Apartment features;

- Large bedrooms with floor to ceiling built-in wardrobes
- Separate media nook with built-in desk
- Open plan living and dining area flowing onto balcony
- Modern kitchen with stone benchtops and Smeg appliances
- Sleek bathrooms with plenty of storage, ensuite off master bedroom with bath
- North facing balcony with access from living and bedrooms
- Internal laundry with dryer included
- Secure basement car space and storage cage included
- Ducted A/C, video intercom and NBN connectivity

870

Contact:

Georgia Glynn
02 8588 8888
0481 388 777
Carmen Whiteley
02 8588 8888
0497 555 519

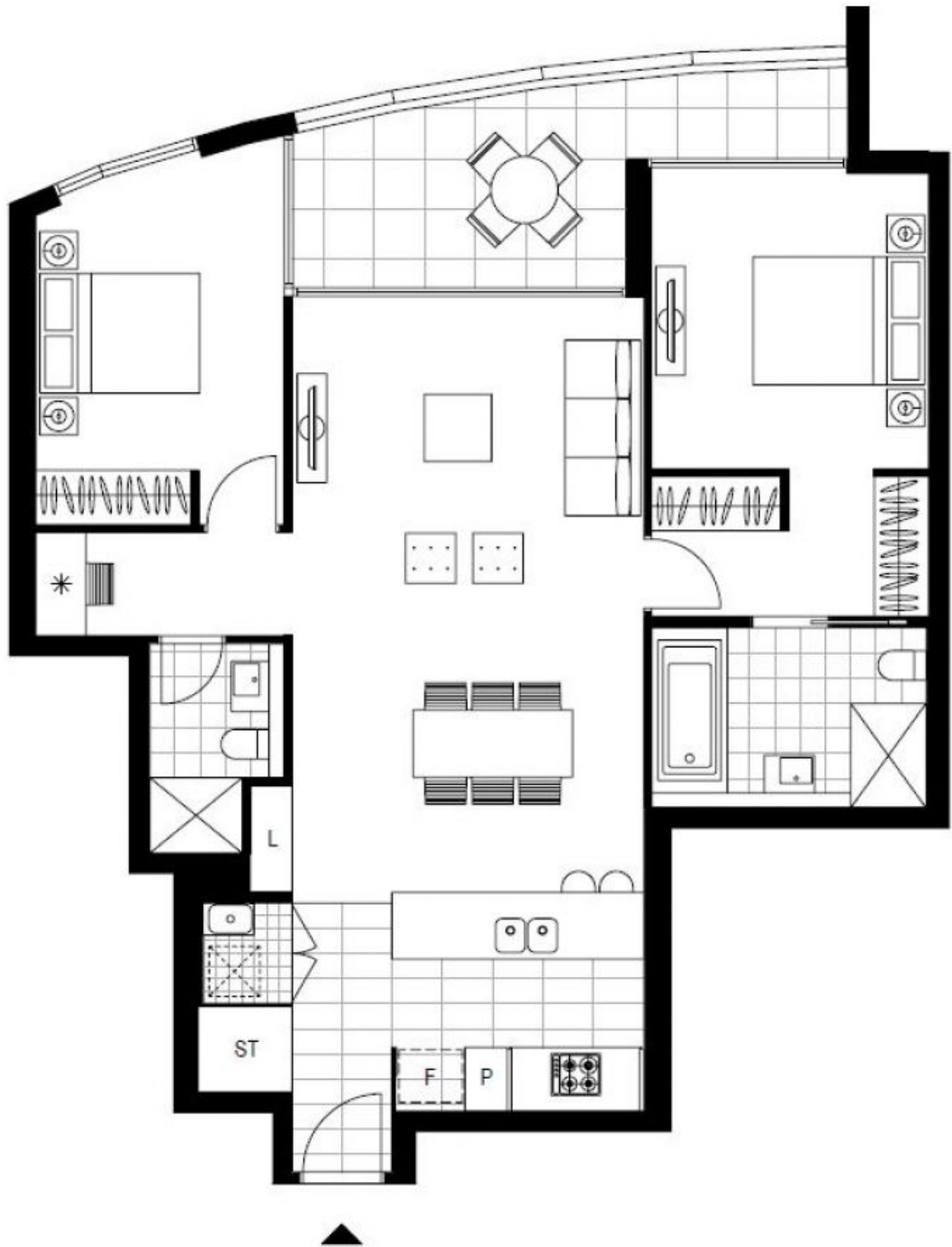
Type:

Apartment

Date Available: 29/06/2018

Bond: \$3480

<https://www.resbymirvac.com>



Plans shown are only indicative of layout. Dimensions are approximate.

ZETLAND, NSW
1805/6 Ebsworth Street