

## ZETLAND, NSW

1805/6 Ebsworth Street

**2**  
BED

**2**  
BATH

**1**  
CAR



### Sweeping City Views from Level 18 2-Bedroom Apartment + Media Nook in Zetland!

This North Facing, 103sqm 2-Bedroom Apartment features;

- Large bedrooms with floor to ceiling built-in wardrobes
- Separate media nook with built-in desk
- Open plan living and dining area flowing onto balcony
- Modern kitchen with stone benchtops and Smeg appliances
- Sleek bathrooms with plenty of storage, ensuite off master bedroom with bath
- North facing balcony with access from living and bedrooms
- Internal laundry with dryer included
- Secure basement car space and storage cage included
- Ducted A/C, video intercom and NBN connectivity

**870**

**Contact:**

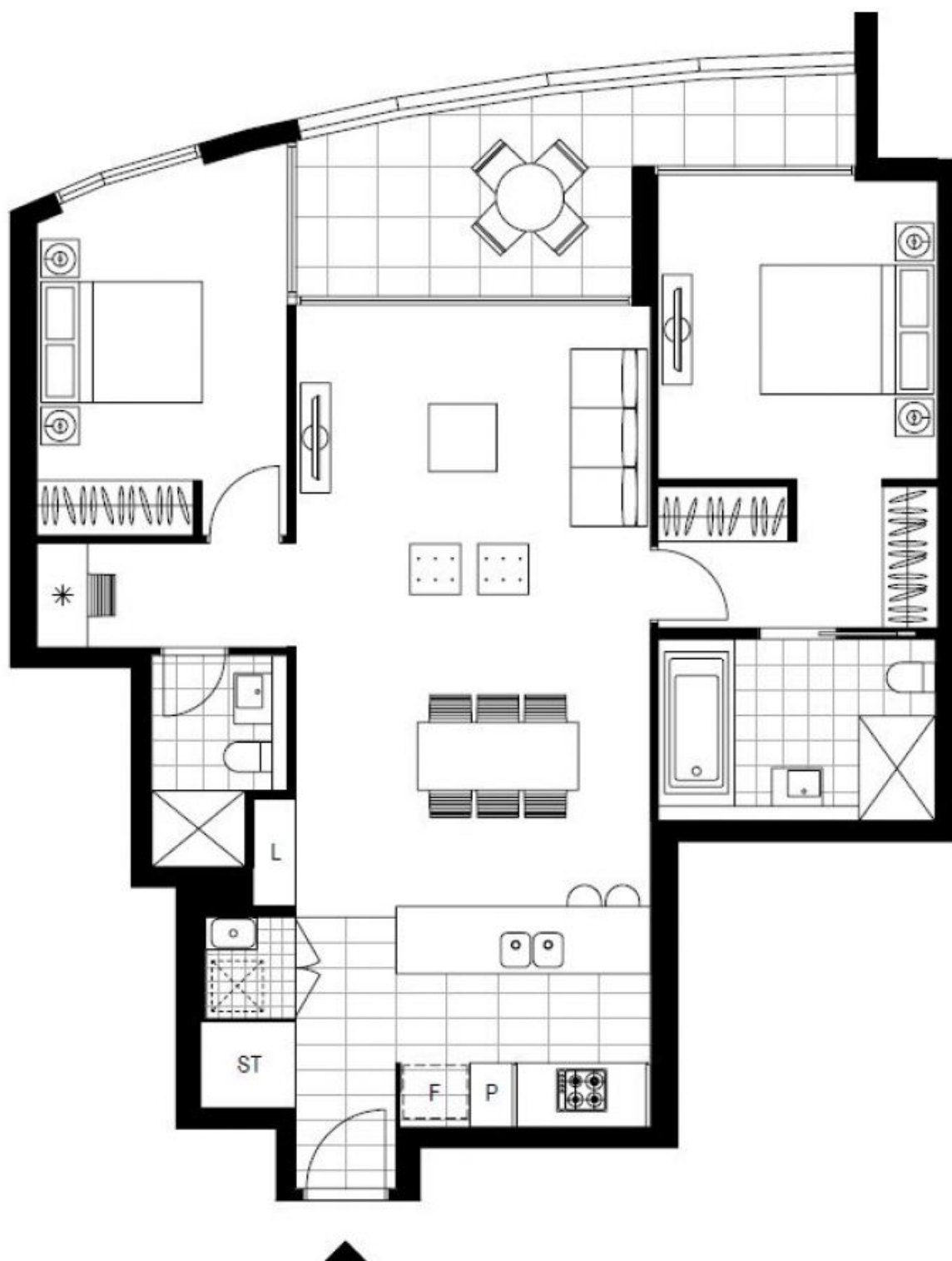
Georgia Glynn  
02 8588 8888  
0481 388 777  
Carmen Whiteley  
02 8588 8888  
0497 555 519

**Type:** Apartment

**Date Available:** 29/06/2018

**Bond:** \$3480

**<https://www.resbymirvac.com>**



Plans shown are only indicative of layout. Dimensions are approximate.

**ZETLAND, NSW**  
1805/6 Ebsworth Street