



## ZETLAND, NSW

2407/6 Ebsworth Street

**2** BED **2** BATH **1** CAR 

### City Views from Brand New 2-Bedroom Apartment with Parking!

This North-East Facing, Level 24, 84sqm 2-Bedroom Apartment features;

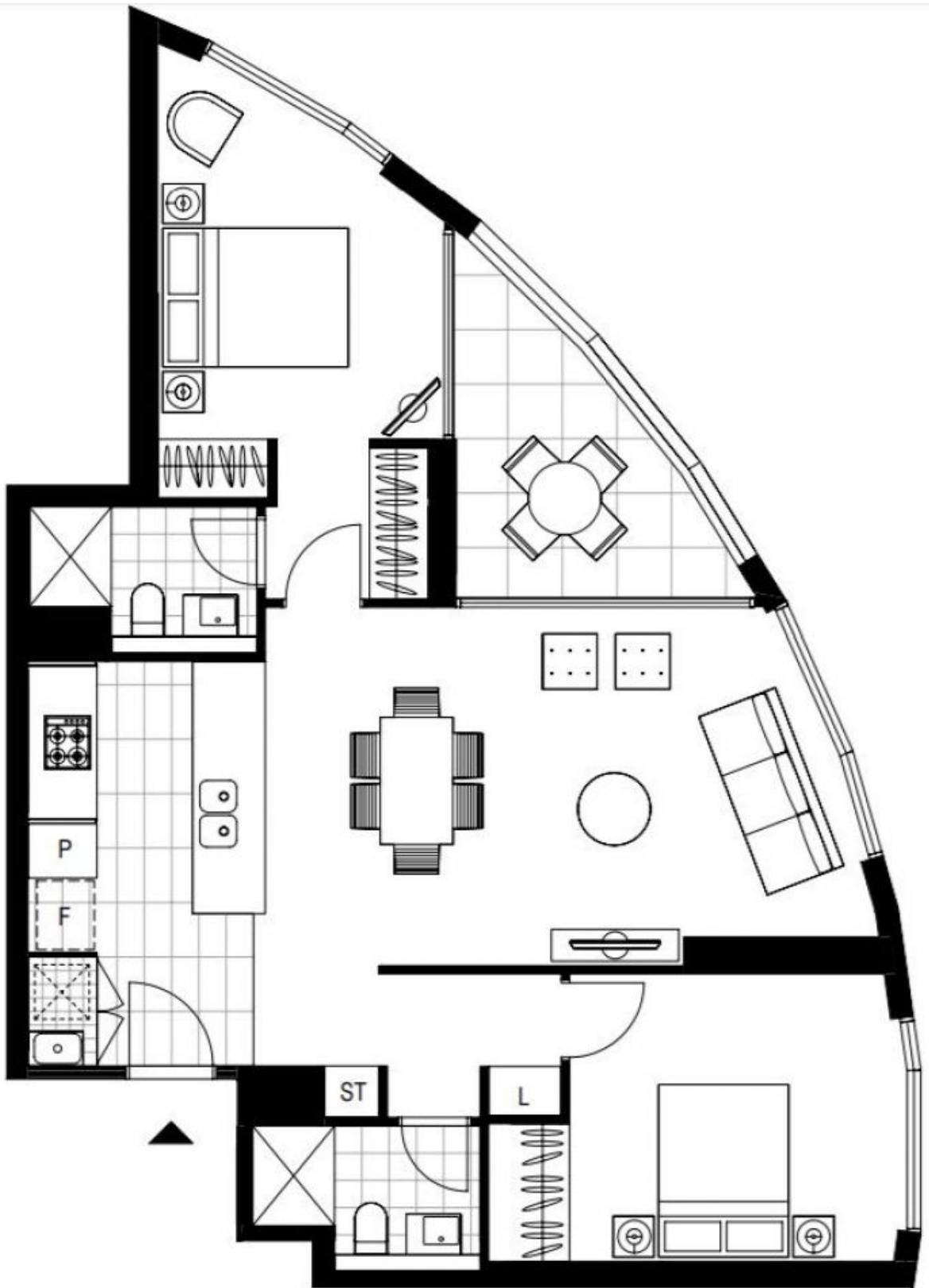
- Large bedrooms with floor to ceiling built-in wardrobes
- Open plan living and dining area flowing onto balcony
- Modern kitchen with stone benchtops and Smeg appliances
- Sleek bathrooms with plenty of storage, ensuite off master bedroom
- East facing balcony with access from living and 2nd Bedroom
- Internal laundry with dryer included
- Secure basement car space and storage cage included
- Ducted A/C, video intercom and NBN connectivity
- Close to Woolworths, 'The Social Corner' and Green Square Train Station.

**880**

**Contact:** Matthew Matthews  
02 8588 8888  
0418 266 590

**Type:** Apartment  
**Date Available:** 06/07/2018

**Bond:** \$3520  
<https://www.resbymirvac.com>



Plans shown are only indicative of layout. Dimensions are approximate.

**ZETLAND, NSW**  
2407/6 Ebsworth Street