

DEPOSIT TAKEN

# More apartments available for lease in Green Square - Zetland!

Please call our leasing hotline 0497 555 519 for more information



GREEN SQUARE



**ZETLAND, NSW**  
2405/6 Ebsworth Street

**2** **2** **1**   
BED BATH CAR

**DEPOSIT TAKEN - Above asking price! Contact 0497 555 519 for more properties**

This North Facing, 103sqm 2-Bedroom Apartment features;

- Open plan living and dining area flowing onto balcony
- Modern kitchen with stone benchtops and Miele appliances
- Large bedrooms with floor to ceiling built-in wardrobes
- Separate study nook with built-in desk, perfect for a home office
- Sleek bathrooms with plenty of storage, Ensuite off master bedroom with bath
- North facing entertainers' balcony with uninterrupted city views
- Internal laundry with dryer included
- Secure basement car space and storage cage included
- Ducted A/C, video intercom and NBN connectivity

**More Apartments Available!**

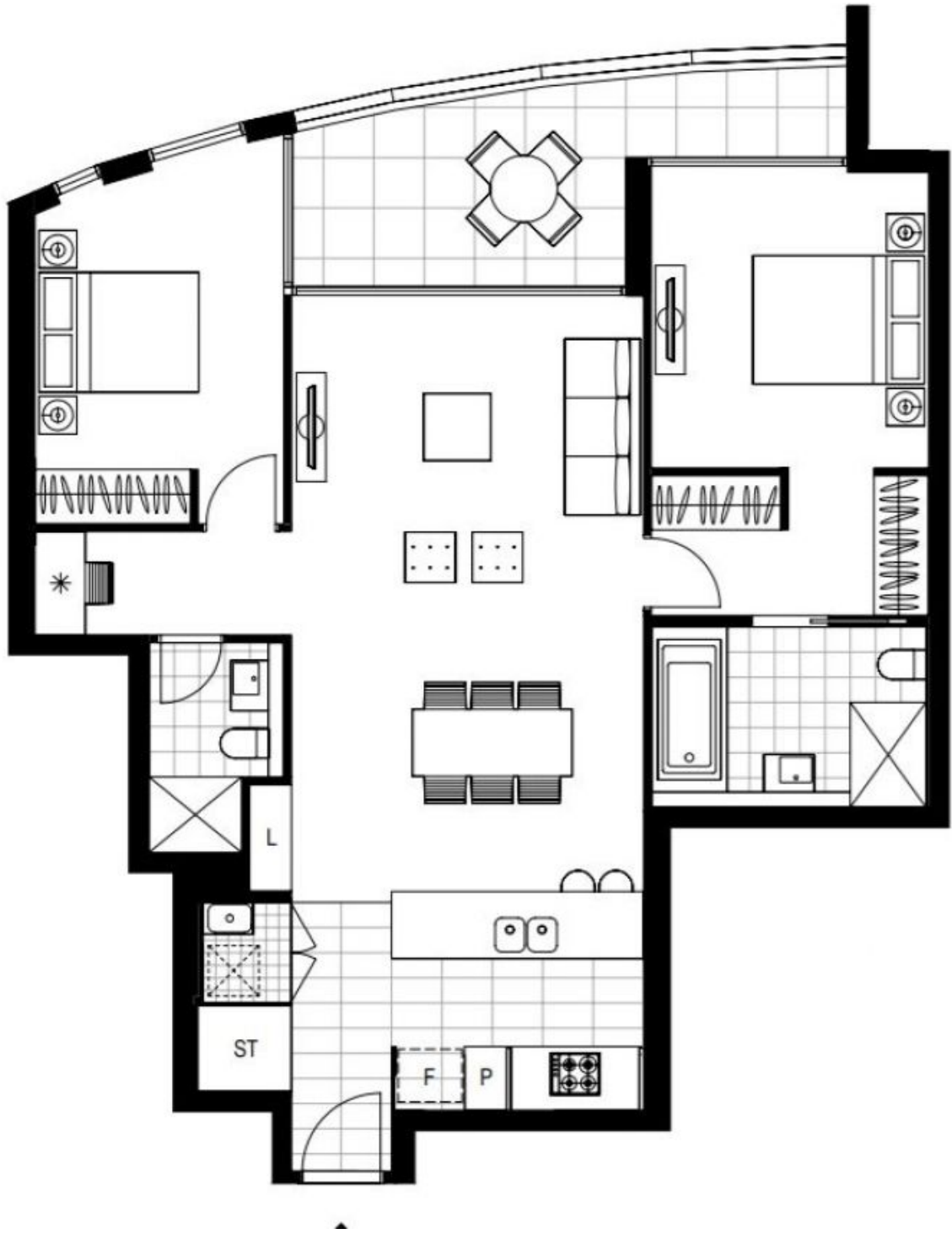
**Contact:** Carmen Whiteley  
02 8588 8888  
0497 555 519

**Type:** Apartment

**Date Available:** 26/11/2020

**Bond:** \$2880

**<https://www.resbymirvac.com>**



Plans shown are only indicative of layout. Dimensions are approximate.

**ZETLAND, NSW**  
2405/6 Ebsworth Street