



ZETLAND, NSW

1609/6 Ebsworth Street

2
BED

1
BATH



High-Rise, 2-Bedroom in Heart of Green Square, Zetland

This 75sqm, Premium Mirvac Apartment features;

- Large bedrooms with floor to ceiling built-in wardrobes
- South Facing entertainers' balcony with access from open plan living room
- Modern kitchen with stone benchtops and Smeg appliances
- Internal laundry with dryer included
- Sleek bathroom with plenty of storage
- Secure storage cage included
- Ducted A/C, video intercom and NBN connectivity
- 300m to Woolworths, The Social Corner and Green Square Train Station (10mins to the City)

DEPOSIT TAKEN - More apartments available!

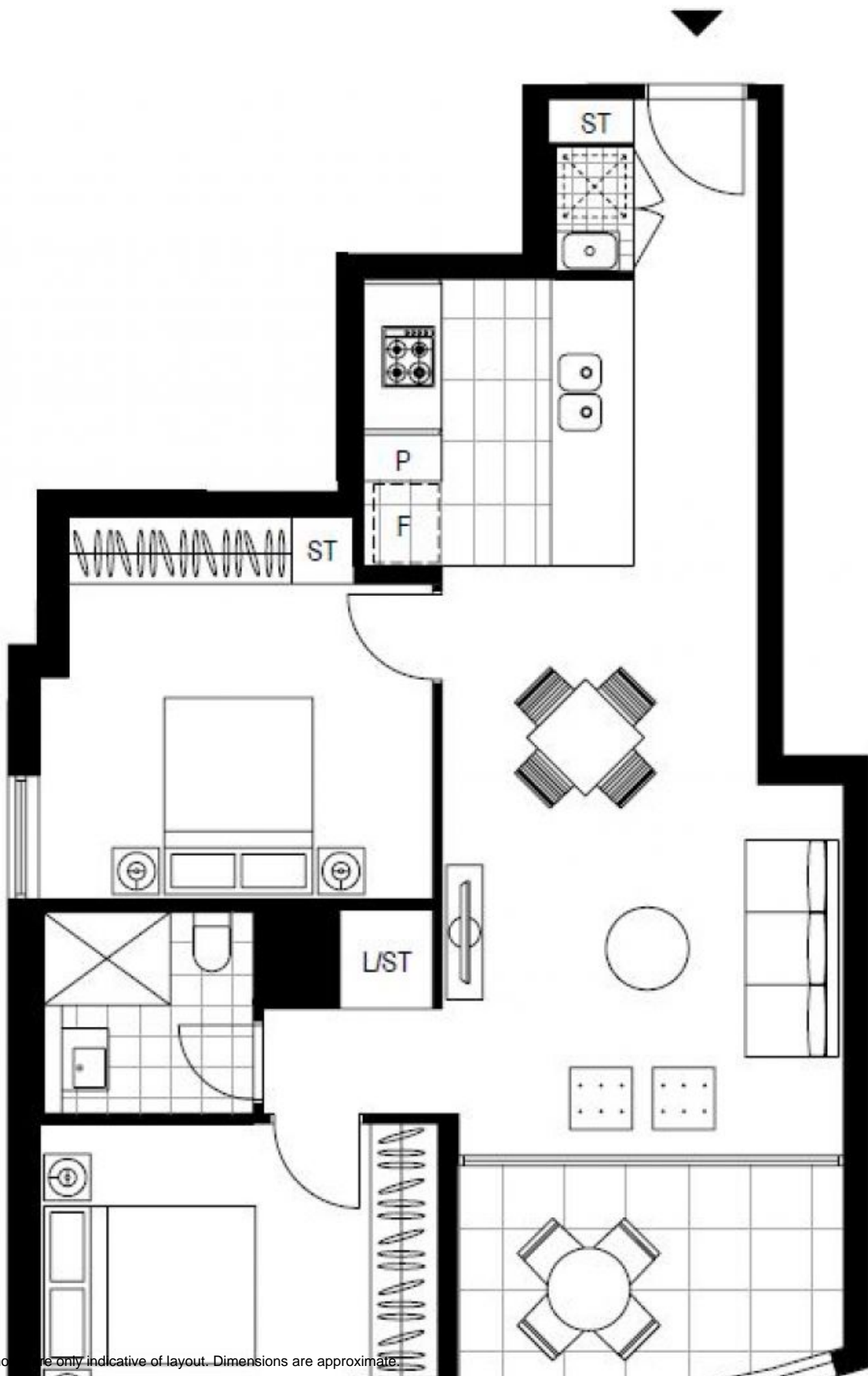
Contact: Carmen Whiteley
02 8588 8888
0497 555 519

Type: Apartment

Date Available: 19/08/2020

Bond: \$2400

<https://www.resbymirvac.com>



Plans shown are only indicative of layout. Dimensions are approximate.

ZETLAND, NSW
1609/6 Ebsworth Street