



## ZETLAND, NSW

1609/6 Ebsworth Street

**2** **1**  
BED BATH



### High-Rise, 2-Bedroom in Heart of Green Square, Zetland

This 75sqm, Premium Mirvac Apartment features;

- Large bedrooms with floor to ceiling built-in wardrobes
- South Facing entertainers' balcony with access from open plan living room
- Modern kitchen with stone benchtops and Smeg appliances
- Internal laundry with dryer included
- Sleek bathroom with plenty of storage
- Secure storage cage included
- Ducted A/C, video intercom and NBN connectivity
- 300m to Woolworths, The Social Corner and Green Square Train Station (10mins to the City)

### DEPOSIT TAKEN - More apartments available!

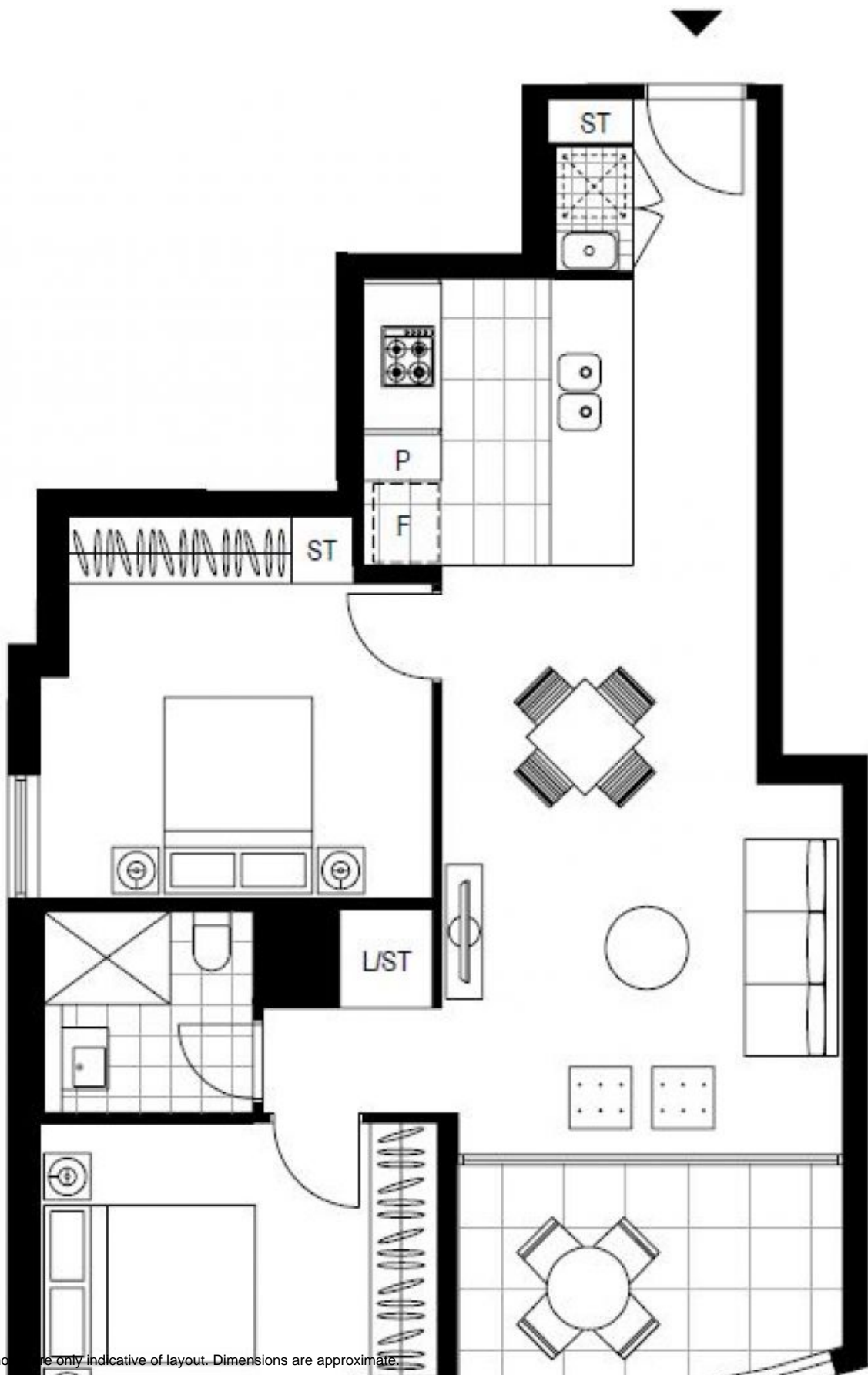
**Contact:** Carmen Whiteley  
02 8588 8888  
0497 555 519

**Type:** Apartment

**Date Available:** 19/08/2020

**Bond:** \$2400

<https://www.resbymirvac.com>



Plans shown are only indicative of layout. Dimensions are approximate.

**ZETLAND, NSW**  
1609/6 Ebsworth Street