



ZETLAND, NSW
202/8 Ebsworth Street

2 BED **1** BATH



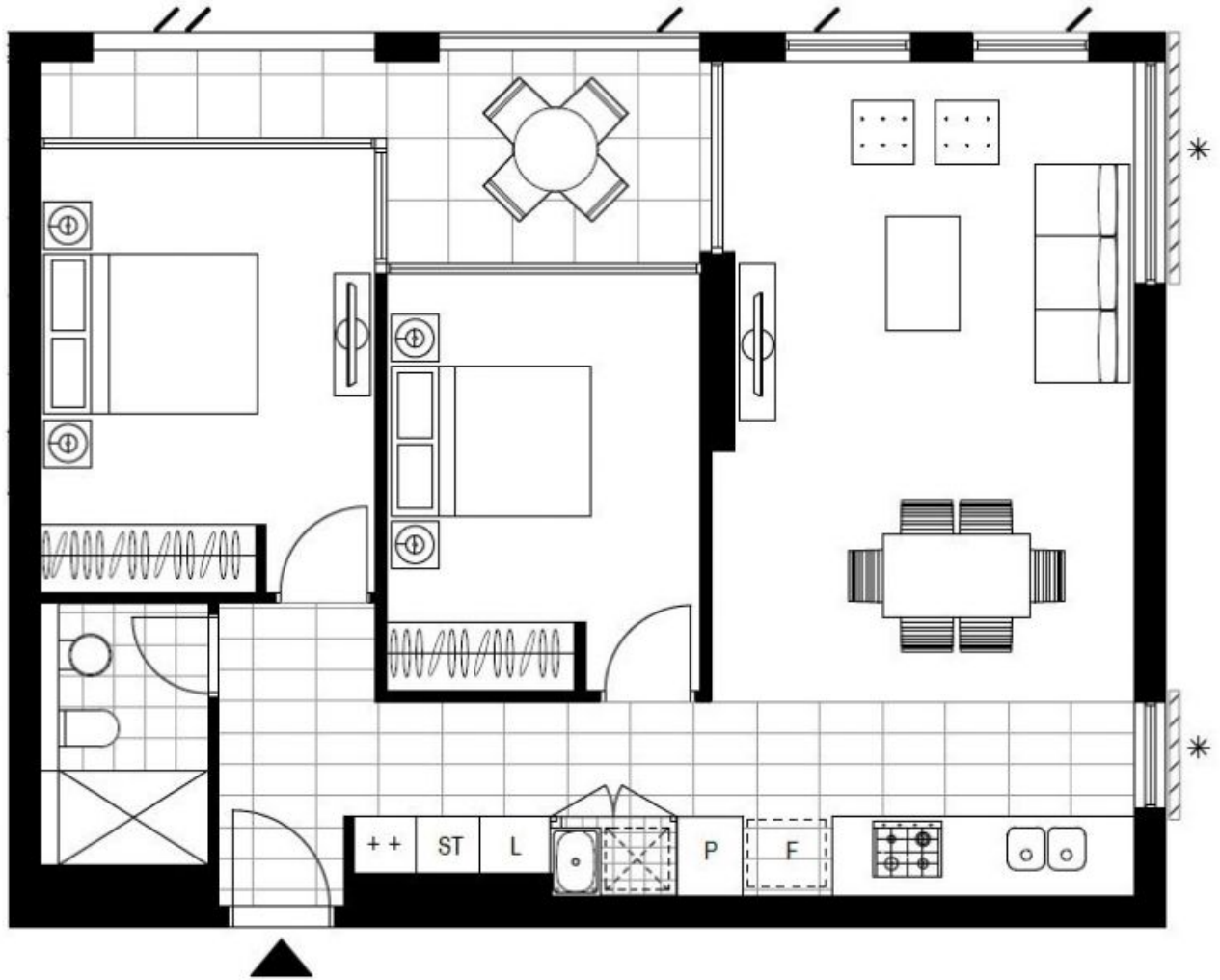
2-Bedroom Apartment near Green Square Station!

This 81sqm, 2-Bedroom Apartment features;

- Open plan living and dining area flowing onto balcony
- Modern kitchen with stone benchtop and Smeg appliances
- Large bedrooms with floor to ceiling built-in wardrobes
- Sleek bathroom with plenty of storage
- Internal laundry with dryer included
- Secure storage cage included
- Ducted A/C, video intercom and NBN connectivity
- Exclusive rooftop gardens for resident use
- 300m to Woolworths, The Social Corner and Green Square Train Station (10mins to the City)

DEPOSIT TAKEN

Contact: Carmen Whiteley
02 8588 8888
0497 555 519
Type: Apartment
Date Available: 15/09/2020
Bond: \$2400
<https://www.resbymirvac.com>



Plans shown are only indicative of layout. Dimensions are approximate.

ZETLAND, NSW
202/8 Ebsworth Street