

ZETLAND, NSW

1801/6 Ebsworth Street

2 BED **2** BATH **1** CAR 

Available NOW! - Level 18, 2 Bedroom Apartment with Parking in Ovo

This 88sqm Apartment on the 18th floor features:

- Spacious bedrooms with generous built-in wardrobes
- Contemporary kitchen with stone benchtops and Miele appliances
- Generous living and dining area
- Balcony with sweeping district views
- Sleek bathrooms with plenty of vanity storage
- Study nook with built-in desk, perfect for a home office
- Internal laundry with dryer included
- Secure car space and storage cage included
- Ducted A/C, video intercom and NBN connectivity
- 300m to Woolworths, The Social Corner and Green Square Train Station (10mins to the City)

DEPOSIT TAKEN

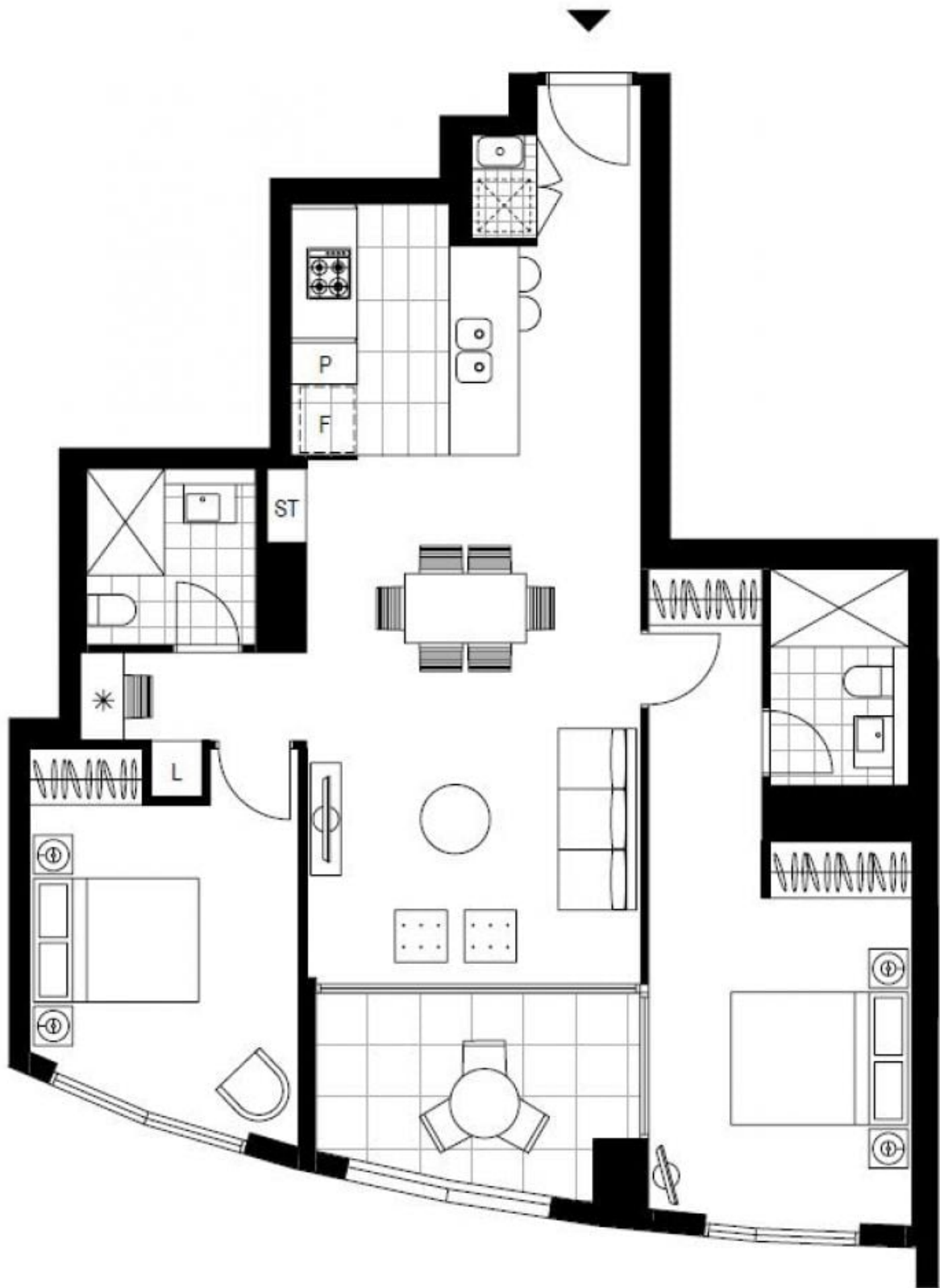
Contact: Carmen Whiteley
02 8588 8888
0497 555 519

Type: Apartment

Date Available: 17/10/2019

Bond: \$3000

<https://www.resbymirvac.com>



Plans shown are only indicative of layout. Dimensions are approximate.

ZETLAND, NSW
1801/6 Ebsworth Street