

ZETLAND, NSW

2403/6 Ebsworth Street

1
BED

1
BATH



1-Bedroom Apartment with Stunning Views in Ovo

This 61sqm, 24th floor Apartment features:

- Spacious bedroom with generous built-in wardrobe
- Open-plan living and dining area, leading to the balcony
- Modern kitchen with stone benchtops and Smeg appliances
- Integrated refrigerator included
- Sleek bathroom with plenty of generous storage
- North-West facing balcony, with unobstructed district views
- Internal laundry with dryer included
- Secure storage cage included
- Ducted A/C, video intercom and NBN connectivity
- 300m to Woolworths, The Social Corner and Green Square Train Station (10mins to the City)

DEPOSIT TAKEN - FIRST INSPECTION!

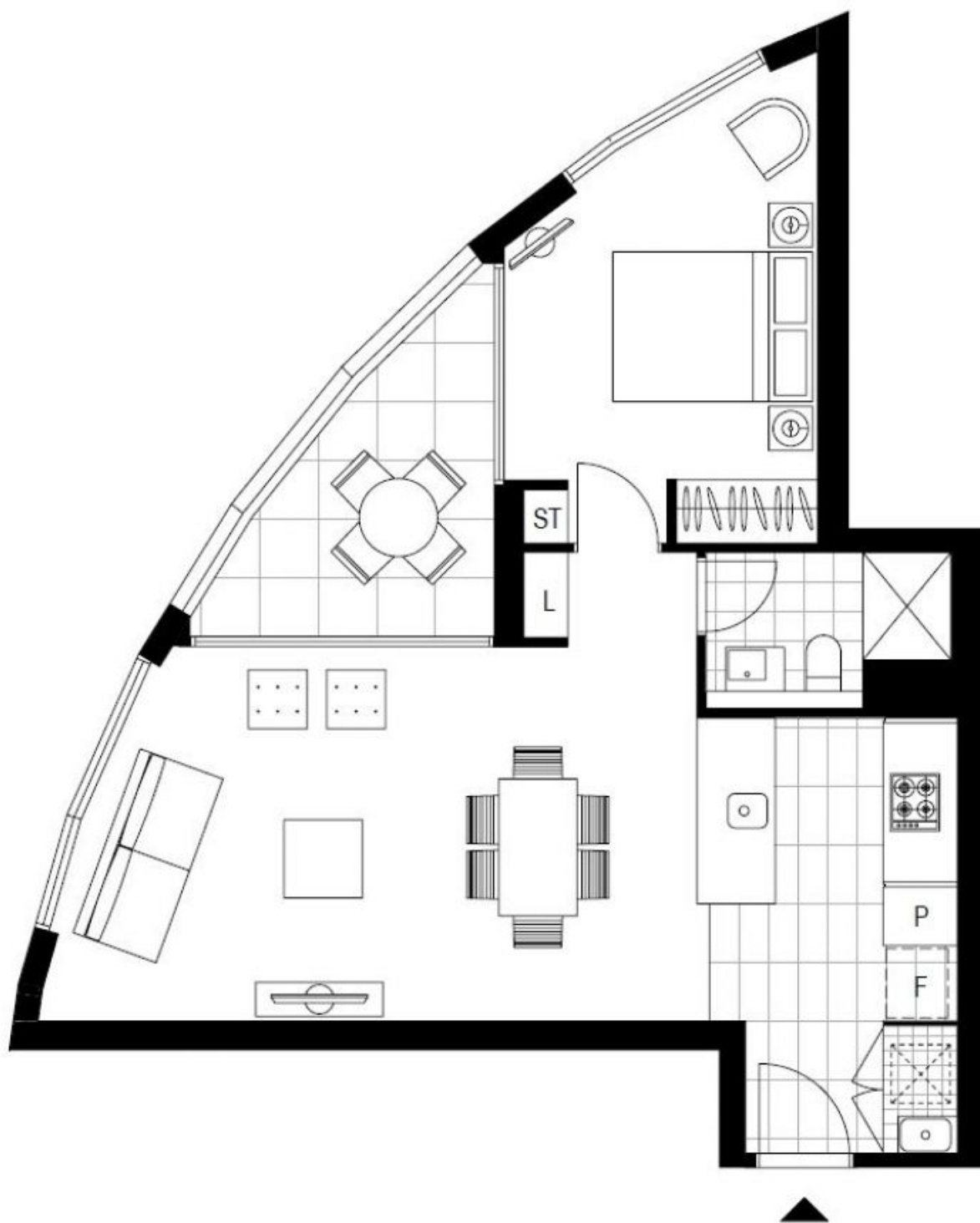
Contact: Carmen Whiteley
02 8588 8888
0497 555 519

Type: Apartment

Date Available: 16/02/2021

Bond: \$2320

<https://www.resbymirvac.com>



Plans shown are only indicative of layout. Dimensions are approximate.

ZETLAND, NSW
2403/6 Ebsworth Street