



DOCKLANDS, VIC

2802/1 Point Park Crescent

3
BED

2
BATH

2
CAR

RES

Exclusive 3 Bedroom Sky Residence in Yarra Point

Offering a dynamic lifestyle on Yarra's Edge, this sophisticated and stylish, architecturally designed apartment is set in Mirvac's prestigious Yarra's Edge Precinct and creates a truly unique experience and style to Melbourne living. Set in a prime location only moments from the Yarra River, South Wharf DFO shopping complex, waterfront restaurants, cafes, public Transport, M1 Freeway and Melbourne's CBD. Upon entry step into the free flowing open plan lounge/dining area with an abundance of space, adjoining kitchen and intelligently positioned balcony maximising natural light and an incredible view of Melbourne's skyline and Yarra River below. The kitchen is a symphony of stainless steel and two pack finishes and incorporates a profusion of storage space, stone bench tops, Miele gas cook top, oven, integrated dishwasher and refrigerator. A central hallway leads to bedrooms two and three, each with built in robes sitting either side of a study alcove and main bathroom. Reaching the master quarter all the creature comforts are at hand with large wardrobes, luxurious ensuite with deep relaxing bath. With additional features

including a study alcove, two secure car spaces, storage cage, central heating/cooling, smart connectivity/energy solutions and exclusive membership to resident only gymnasium and communal facilities, be the first to live this sensational Docklands Residence!

\$1020 per week

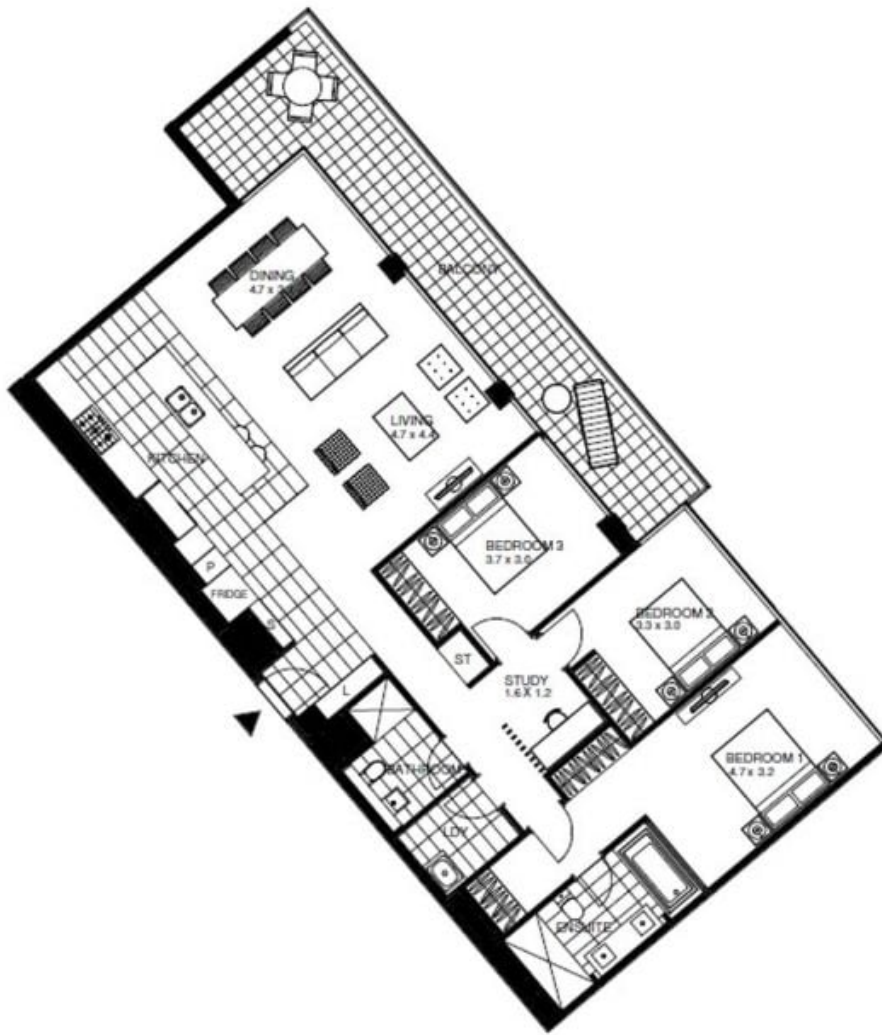
Contact: Baden Lucas
03 9645 1199
0418 888 751

Type: Apartment

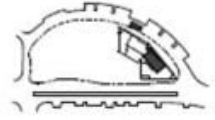
Date Available: 19/07/2018

Bond: \$6120

<https://www.resbymirvac.com>



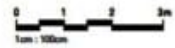
LEVEL 27,28,29,30,31



LOCATION PLAN

3 Bedroom + Study Apartment

INTERNAL AREA - 151 m²
BALCONY AREA - 29 m²



TOWER B
YARRAS EDGE
Apartment 27.02
Apartment 28.02
Apartment 29.02
Apartment 30.02
Apartment 31.02

Plans shown are only indicative of layout. Dimensions are approximate.

DOCKLANDS, VIC
2802/1 Point Park Crescent