

ZETLAND, NSW

505/6 Ebsworth Street

1
BED

1
BATH



Bright contemporary living footsteps to Green Square and cafes

The ultimate cosmopolitan city-fringe lifestyle, this apartment offers sleek modern living in an enviably convenient position. It plays host to a vast open plan indoor/outdoor design and sumptuous finishes and inclusions. Step out to some of Sydney's best cafes and restaurants and enjoy close proximity to buses and rail, Green Square library and The Social Corner'.

- ? Open plan kitchen and vast living/dining flows to balcony
- ? Gas kitchen, stone bench tops, high-end Miele appliances
- ? Sizeable bedroom with a built-in robe, fully tiled bathroom
- ? Internal laundry, ducted air conditioning, security entrance
- ? Elevated fifth floor position with lift access, storage cage
- ? Superbly presented, ready to move straight into or rent out

Price Guide \$655,000

Council Rates: \$1,120/year (approx)

Strata Rates: \$3,000/year (approx)

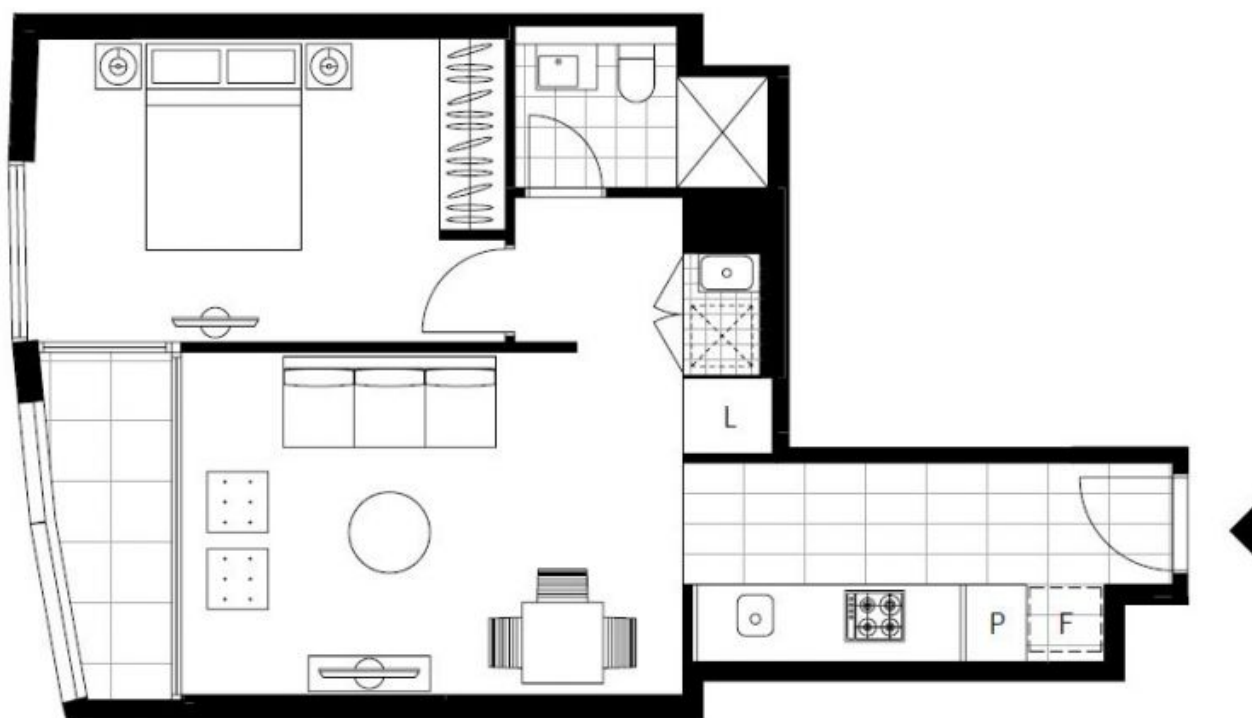
Contact: Matthew Matthews
02 8588 8888
0418 266 590

Type: Apartment

Date Available: 02/07/2019

Sold Date: 11/05/2021

<https://www.resbymirvac.com>



Plans shown are only indicative of layout. Dimensions are approximate.

ZETLAND, NSW
505/6 Ebsworth Street