

## ZETLAND, NSW

1402/6 Ebsworth Street

**2** BED **2** BATH **1** CAR 

### Stunning District Views from Level 14 2-Bedroom Apartment with Parking!

This South-West Facing, 88sqm 2-Bedroom Apartment features;

- Open plan living and dining area flowing onto balcony
- Modern kitchen with stone benchtops and Smeg appliances
- Large bedrooms with floor to ceiling built-in wardrobes
- Sleek bathrooms with plenty of storage, ensuite off master bedroom
- West facing balcony with access from living and second bedroom
- Internal laundry with dryer included
- Secure basement car space and storage cage included
- Ducted A/C, video intercom and NBN connectivity
- Close to Woolworths, 'The Social Corner' and Green Square Train Station.

**810**

**Contact:**

Matthew Matthews

02 8588 8888

0418 266 590

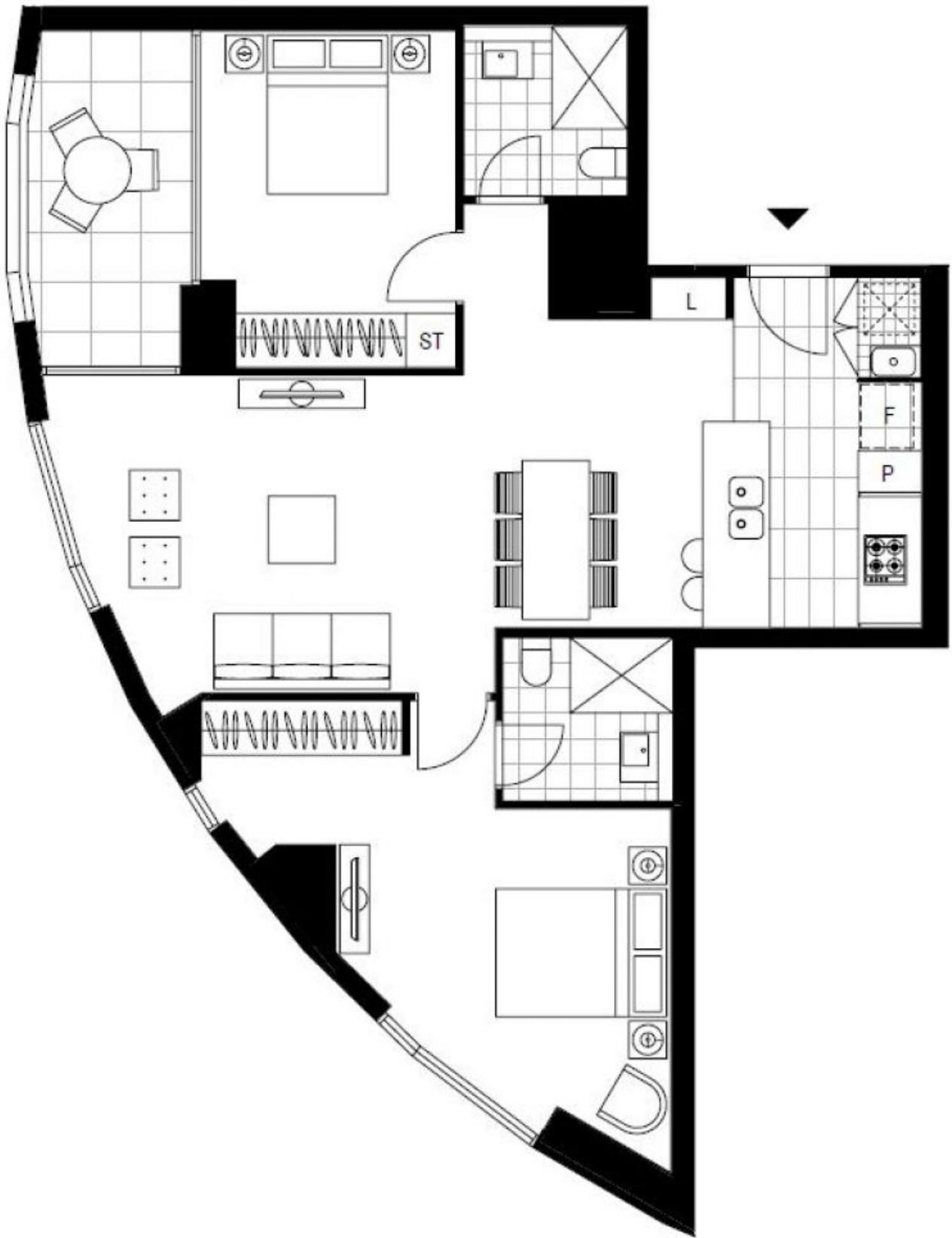
**Type:**

Apartment

**Date Available:** 05/06/2018

**Bond:** \$3240

<https://www.resbymirvac.com>



Plans shown are only indicative of layout. Dimensions are approximate.

**ZETLAND, NSW**  
1402/6 Ebsworth Street