

## ZETLAND, NSW

1607/6 Ebsworth Street

**2** **2** **1**  
BED BATH CAR



### 2-Bedroom Apartment with City Views from Level 16!

This 84sqm Apartment features:

- Spacious bedrooms with generous built-in wardrobes
- Open-plan living and dining area, with lots of natural light
- Contemporary kitchen with stone benchtops and Miele appliances
- Sleek bathrooms with plenty of storage
- North-East facing balcony with uninterrupted city views
- Internal laundry with dryer included
- Secure car space and storage cage included
- Ducted A/C, video intercom and NBN connectivity
- 300m to Woolworths, The Social Corner and Green Square Train Station (10mins to the City)

### DEPOSIT TAKEN

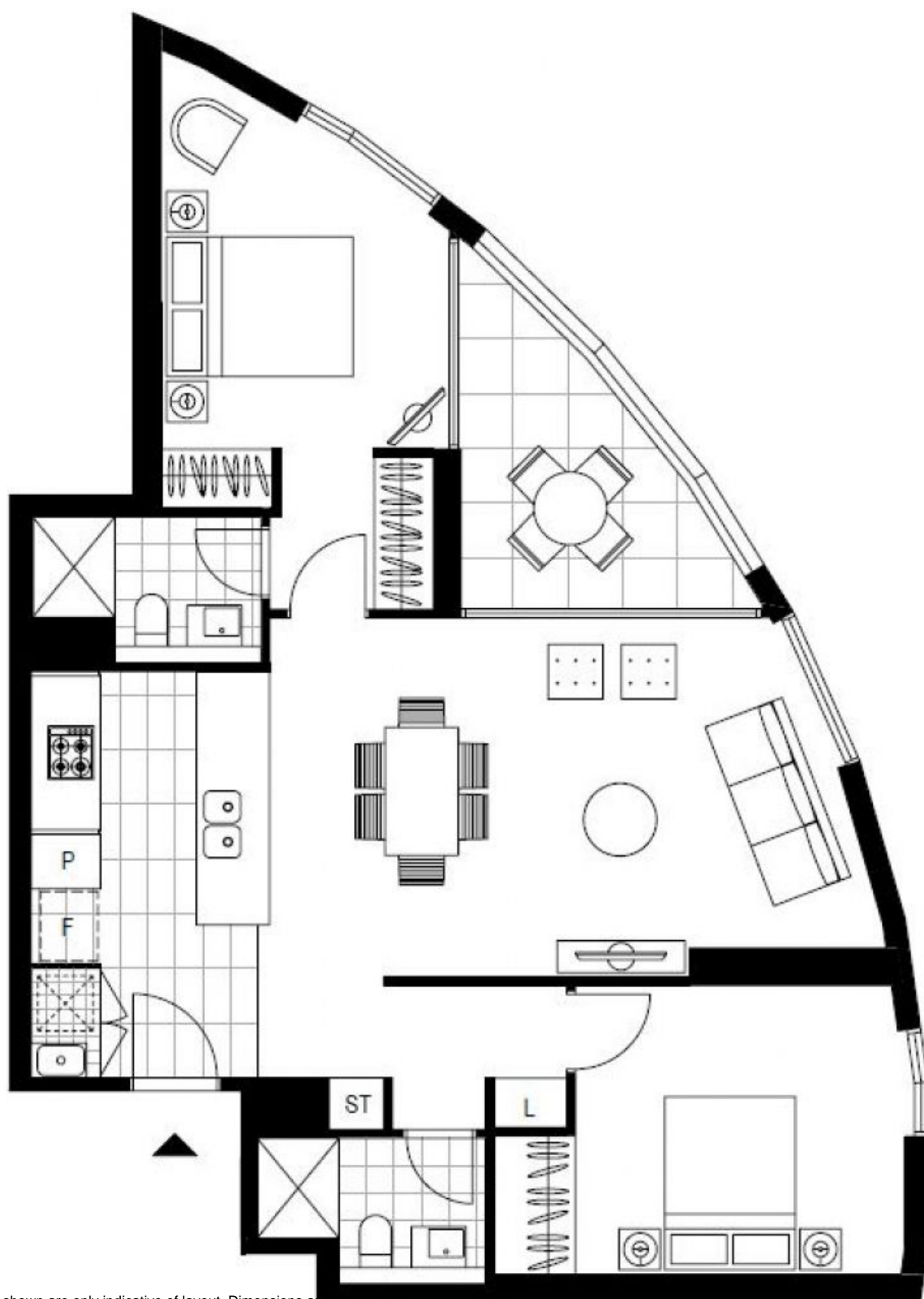
**Contact:** Carmen Whiteley  
02 8588 8888  
0497 555 519

**Type:** Apartment

**Date Available:** 15/11/2019

**Bond:** \$3120

<https://www.resbymirvac.com>



Plans shown are only indicative of layout. Dimensions are approximate.

**ZETLAND, NSW**  
1607/6 Ebsworth Street