



GLEBE, NSW
1406/1 Scotsman Street

1 BED **1** BATH **1** CAR



Sleek modern studio with bedroom alcove near the Tramsheds

A sleek and sophisticated studio with a distinct bedroom alcove, this apartment promise an exceptional lifestyle for the urban sophisticate. Stay in and enjoy a vast open plan indoor/outdoor design, sumptuous finishes and inclusions and a sun-drenched northeast aspect or step out and stroll the cosmopolitan attractions of the Tramsheds, parks and walking tracks.

- • Light-filled interiors, clean lines, fresh earthy colour palette
- • Open plan kitchen and vast living/dining flows to balcony
- • Covered balcony with lovely residential and leafy outlooks
- • Gas kitchen, stone bench tops, high-end Miele appliances
- • Bedroom alcove with built-in robe, stylish fully tiled bathroom
- • Internal laundry, ducted air conditioning, security entrance

Price Guide \$680,000

Council Rates: \$1,021/year (approx)

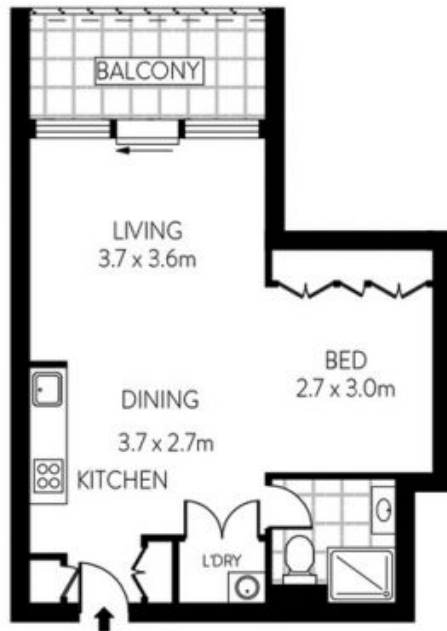
Strata Rates: \$2,640/year (approx)

Contact: Matthew Matthews
02 8588 8888
0418 266 590

Type: Apartment

Sold Date: 08/06/2021

<https://www.resbymirvac.com>



LEVEL FOUR



PLANS SHOWN ONLY INDICATIVE OF LAYOUT. DIMENSIONS ARE APPROXIMATE.
Floor plans by www.renaustralia.com
Ref. No. 14559

INTERNAL	: 42.63m ²
BALCONY	: 6.12m ²
STORAGE CAGE	: 3.00m ²
CAR SPACE	: 13.75m ²



1406/1 SCOTSMAN STREET

HAROLD PARK

Plans shown are only indicative of layout. Dimensions are approximate.

GLEBE, NSW
1406/1 Scotsman Street