



## GLEBE, NSW

609/147 Ross Street

1  
BED

1  
BATH



### Modern 1-Bedroom Apartment in Harold Park

This 60sqm, 6th floor Apartment has to offer:

- Large bedroom with built-in wardrobes
- Stone benchtop and Miele appliances in kitchen
- Sleek bathroom with vanity storage
- Open plan living/dining area leading to a balcony
- Study nook area, perfect for a home office
- Internal laundry with dryer included
- Secure basement storage cage included
- Ducted A/C, video intercom and NBN connectivity
- Walking distance to buses, the light rail and the Tramsheds

\*\*images indicative only\*\*

**\$580 per week**

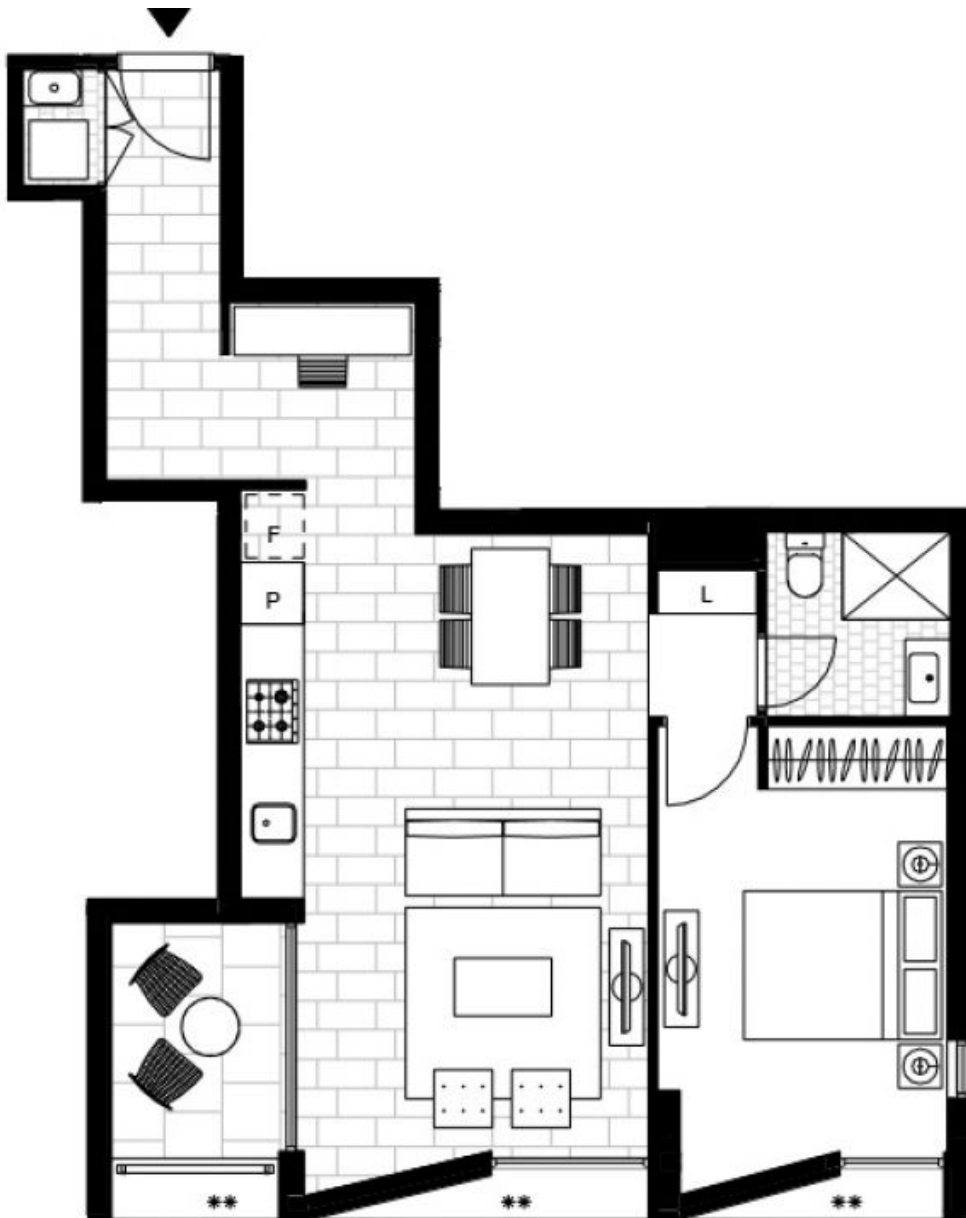
**Contact:** Stuart Nohra  
02 8588 8888  
0432 206 000

**Type:** Apartment

**Date Available:** 21/06/2018

**Bond:** \$2320

**<https://www.resbymirvac.com>**



Plans shown are only indicative of layout. Dimensions are approximate.

**GLEBE, NSW**  
609/147 Ross Street