



GLEBE, NSW

609/147 Ross Street

1
BED

1
BATH



Modern 1-Bedroom Apartment in Harold Park

This 60sqm, 6th floor Apartment has to offer:

- Large bedroom with built-in wardrobes
- Stone benchtop and Miele appliances in kitchen
- Sleek bathroom with vanity storage
- Open plan living/dining area leading to a balcony
- Study nook area, perfect for a home office
- Internal laundry with dryer included
- Secure basement storage cage included
- Ducted A/C, video intercom and NBN connectivity
- Walking distance to buses, the light rail and the Tramsheds

****images indicative only****

\$580 per week

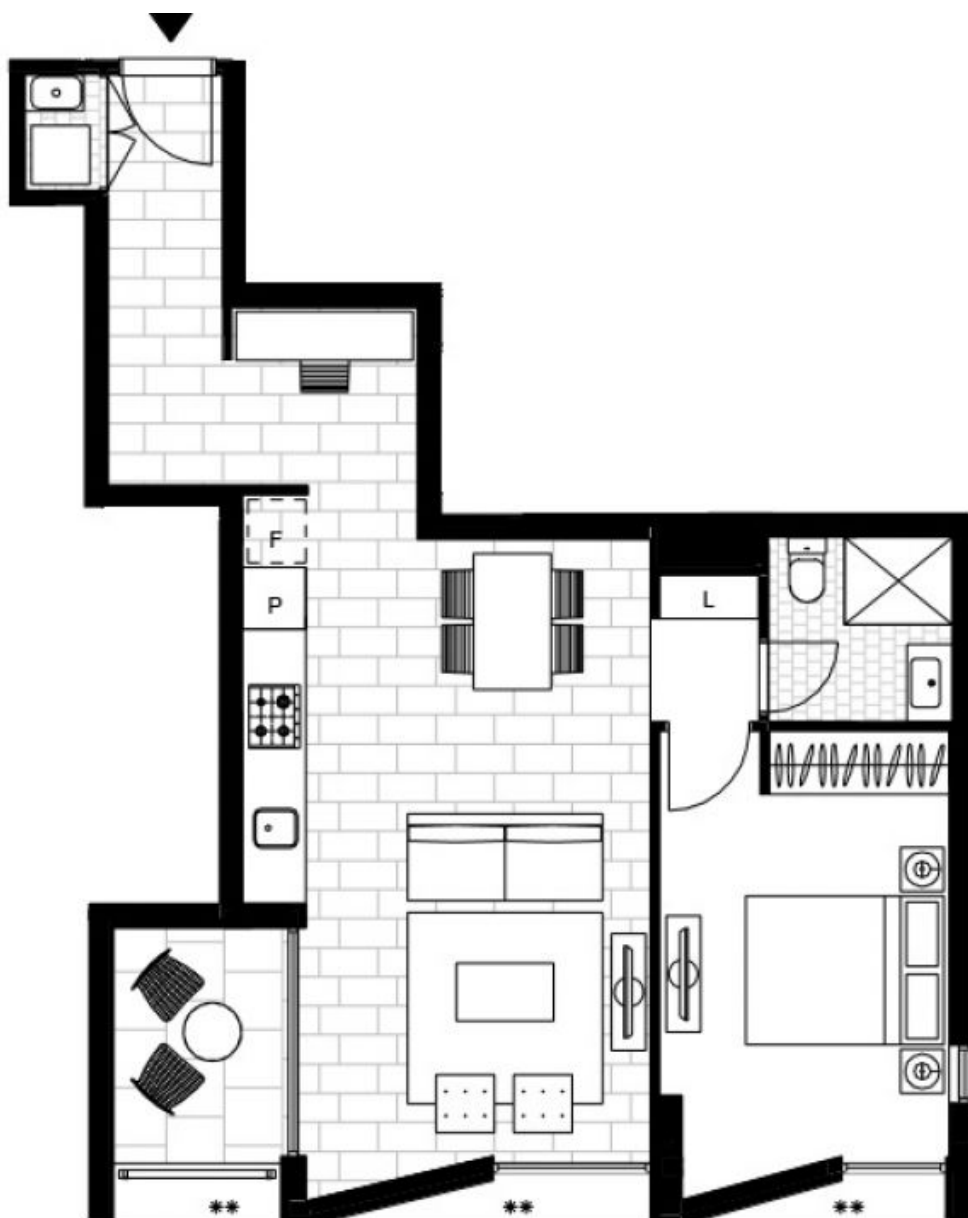
Contact: Stuart Nohra
02 8588 8888
0432 206 000

Type: Apartment

Date Available: 21/06/2018

Bond: \$2320

<https://www.resbymirvac.com>



Plans shown are only indicative of layout. Dimensions are approximate.

GLEBE, NSW
609/147 Ross Street