

DEPOSIT TAKEN

# More apartments available for lease in Green Square - Zetland!

Please call our leasing hotline 0497 555 519 for more information



GREEN SQUARE



**ZETLAND, NSW**  
1406/6 Ebsworth Street

**2** **2** **1**   
BED BATH CAR

## Sweeping City Views from Level 14, 2-Bedroom Apartment in Zetland

This North Facing, 103sqm Apartment features;

- Large bedrooms with floor to ceiling built-in wardrobes
- Separate media nook with built-in desk, perfect for a home office
- Open plan living and dining area flowing onto balcony
- Modern kitchen with stone benchtops and Smeg appliances
- Sleek bathrooms with plenty of storage, ensuite off master bedroom with bath
- North facing balcony with access from living and bedrooms, stunning city views
- Internal laundry with dryer included
- Secure basement car space and storage cage included

## More Apartments Available!

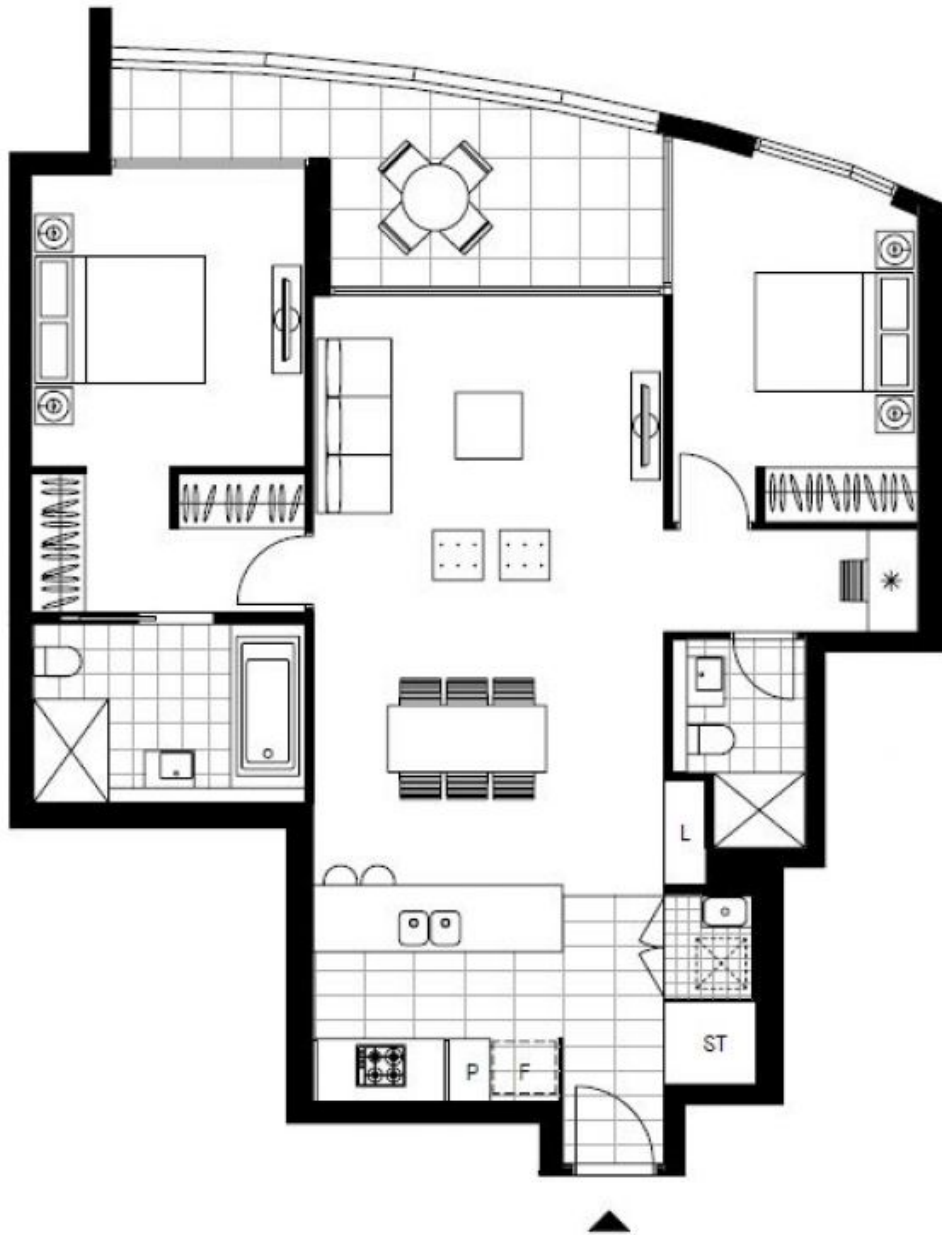
**Contact:** Carmen Whiteley  
02 8588 8888  
0497 555 519

**Type:** Apartment

**Date Available:** 16/10/2020

**Bond:** \$2880

<https://www.resbymirvac.com>



LEVEL 14

Plans shown are only indicative of layout. Dimensions are approximate.

**ZETLAND, NSW**  
1406/6 Ebsworth Street